

Architect  
Apurva Amin Architects

Structural Design  
Amees Associates

For Booking, Call  
+91-7069043363 | +91-8000444499

info@cloud9infra.in  
www.cloud9infra.in

Site : Opp. Shaligram Tower, Nr. Jhansi ki Rani statue, towards Nehrunagar to Shivranjani road, Ahmedabad - 380015.

**Note :** "All the details master plan & floor plans are tentative in nature. This brochure is just for better understanding the project & not for commercial circulation". Developer reserves the rights to make necessary changes without any prior notice. Such changes would be binding all the members. All the purchasers/legal possession holders shall abide by such changes. Changes/alterations of any nature by any member/purchaser/buyer/ legal possession holder will not be permitted. All the dimensions are approximate & unfurnished. Subject to Ahmedabad jurisdiction only.

www.goint.in





# A WISH THAT COMES TRUE

The center of everyone's universe, a place so vibrant, a place that everyone wishes for, a place that we call the safest, a place that is an emblem of love and a symbol of unity - a home. At Cloud 9, we offer more than a space, we offer shelters, we offer a place where living is lifestyle, a place of luxury where everyone looks and goes "I wish." A prestigious area, surrounded by happening people where homes are not merely spaces. Cloud 9, is your every wishes coming true.

The architectural design of Cloud 9, is structured by Ahmedabad's renowned architect Mr. Apurva Amin. His promising sense of magnificence & design will surely make you meet the top-notch quality work.



# A WISH FOR AN EXOTIC LOCATION

What more do we need when we can reach the stars of the city? Cloud 9 is certainly a center to some of the best outlandish landmarks and amenities which make us a wish granting positioning of Ahmedabad. Some of the best schools, malls, hotels, restaurants, hospitals, temples, commercial and corporate offices fall into our radius, making your life a perfect combination of comfort, convenience and luxury.

|                 |                        |                  |                      |
|-----------------|------------------------|------------------|----------------------|
| <b>1</b><br>min | FROM JAIN TEMPLE       | <b>8</b><br>min  | FROM A.M.A.          |
| <b>2</b><br>min | FROM SHIV TEMPLE       | <b>10</b><br>min | FROM STAR BAZAAR     |
| <b>2</b><br>min | FROM BRTS STOP         | <b>12</b><br>min | COURTYARD MARRIOTT   |
| <b>6</b><br>min | FROM MEDILINK HOSPITAL | <b>20</b><br>min | FROM RAILWAY STATION |
| <b>8</b><br>min | FROM IIM               | <b>30</b><br>min | FROM AIRPORT         |







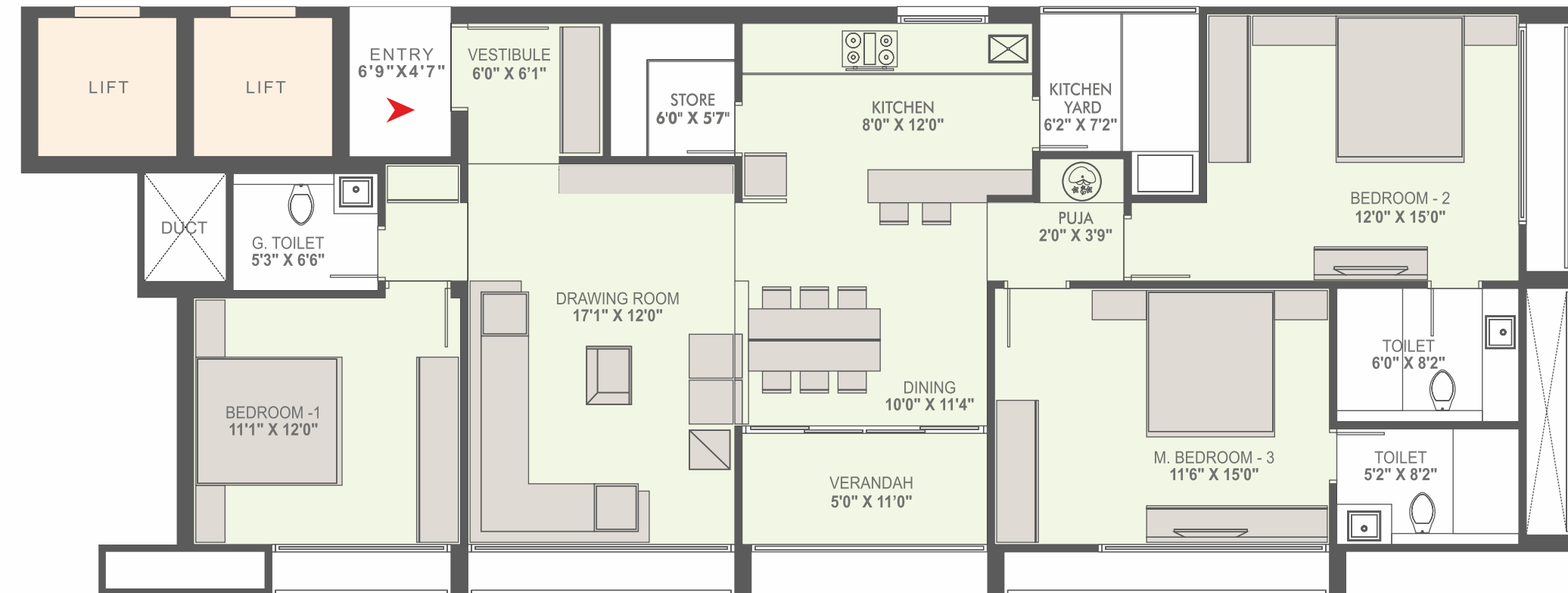
WHERE EVERY INCH IS  
**PLANNED**





A | D | H | I | J TYPE FLOOR

# 3 BHK UNIT PLAN



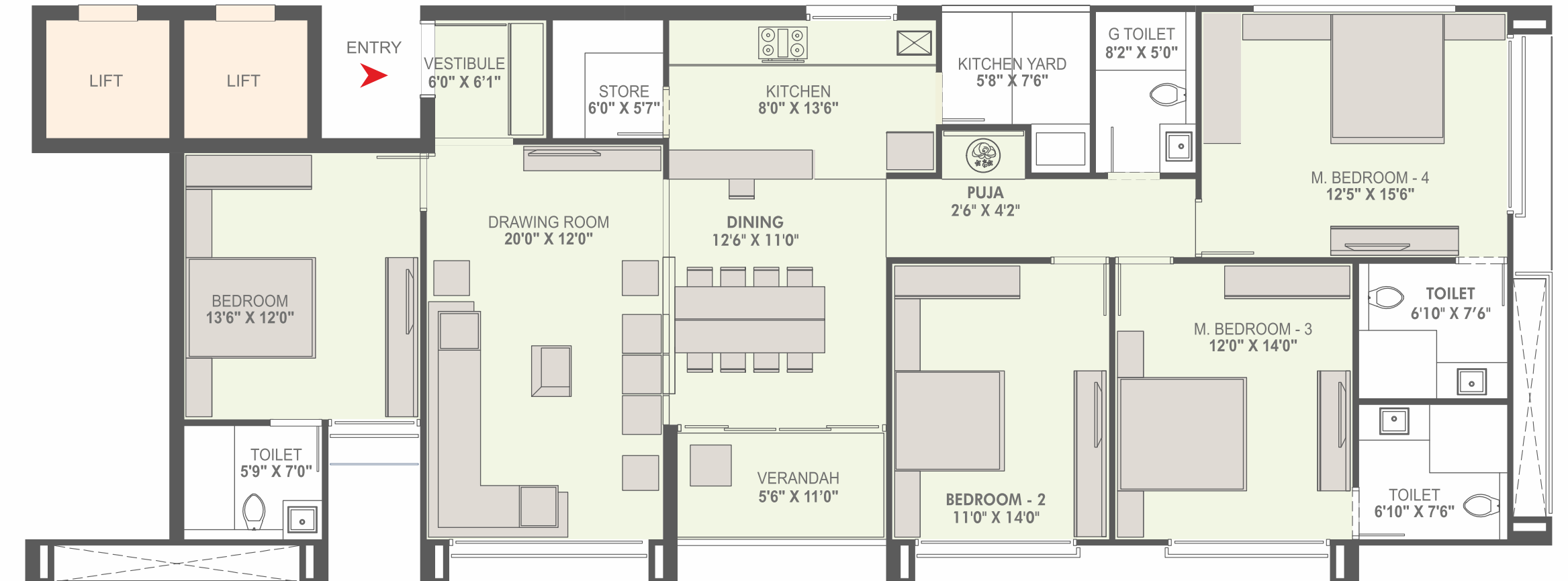
3 BHK UNIT PLAN  
BLOCK : A | D | H | I | J





ENTRY

E | TYPE FLOOR  
**4 BHK UNIT TYPE-1**



**4 BHK UNIT TYPE -1**  
BLOCK : E





B | C | F | G | TYPE FLOOR

## 4 BHK UNIT TYPE-2



4 BHK UNIT TYPE -2  
BLOCK : B | C | F | G





WHERE YOUR EVERYDAY LIFESTYLE BECOMES  
**DREAM FOR OTHERS**





A WISH FOR THE NEXT  
**LANDMARK**





1. ENTRANCE PLAZA
2. WATCHMAN CABIN WITH WATER BODY
3. DROP-OFF ZONE WITH THEME WALL
4. SUNKEN TREE GROVE WITH RAMP FOR SENIOR CITIZENS
5. PLAZA WITH SWING BESIDES DISPLAY PLANTING
6. COLUMNS WITH BAMBOO PLANTATION
7. CLUB HOUSE
8. TODDLERS' POOL WITH SPOUTS AND DISPLAY PLANTING
9. SCULPTURAL TREE WITH DISPLAY PLANTING
10. TRELLIS ALONG WOODEN DECK
11. WOODEN DECK WITH PALM GROVE
12. WATER BODY WITH SCULPTURAL TREES
13. SITTING AREA WITH PALM GROVE
14. CHILDREN PLAY AREA
15. CONGREGATION LAWN
16. SIT-OUT PLAZA

17. STAGE WITH TRELLIS
18. PLAZA ALONG WATER BODY WITH THEME WALL
19. SIT-OUT WITH TRELLIS AND DISPLAY PLANTING
20. SKATING RINK
21. BOX CRICKET
22. BADMINTON COURT
23. DISPLAY PLANTING WITH THEME WALL
24. PLAZA WITH SCULPTURAL TREES
25. FAMILY LAWN
26. SIT-OUT WITH TRELLIS AMIDST PLANTING
27. ESTATE OFFICE
28. MINI THEATER
29. INDOOR SPORTS
30. DAY CARE CENTER
31. LIBRARY

- 3 BHK LUXURIOUS UNIT
- 4 BHK COMPACT UNIT
- 4 BHK LUXURIOUS UNIT







LIVING ROOM VIEW  
**FROM THE DOOR**



MODERN SPACIOUS  
**LIVING ROOM**





MODULAR KITCHEN CONNECTED TO  
**DINING ROOM**



BEDROOM WITH  
**BALCONY OPENING**



# A WISH FOR REJOICING

We are often down with the question “Did you simply exist or you lived?” The trick is to seek out how to live after spending enough time sitting on an office chair. Cloud9 offers an emulating life with a mixture of fitness, sports, leisure and luxury which makes you long for your happy place, the moment you step out.



INDOOR  
GAMES



MULTIPURPOSE  
HALL



MINI THEATER  
FOR SCREENING



CHILDREN  
PLAY AREA



# A WISH FOR AN ELITE LIFE

At Cloud 9, our primary care is your health. Staying tangled in your multi-faceted job environment makes your life a stressful experience. By offering you multiple outdoor and indoor games, we fulfill your wish for a hale and hearty life.



AIR CONDITIONING  
IN ALL ROOMS



BADMINTON



BOX  
CRICKET



25000 SQ. FT.  
POOLSIDE GARDEN



SENIOR CITIZEN  
SIT-OUTS



GYM



SPLASH  
POOL



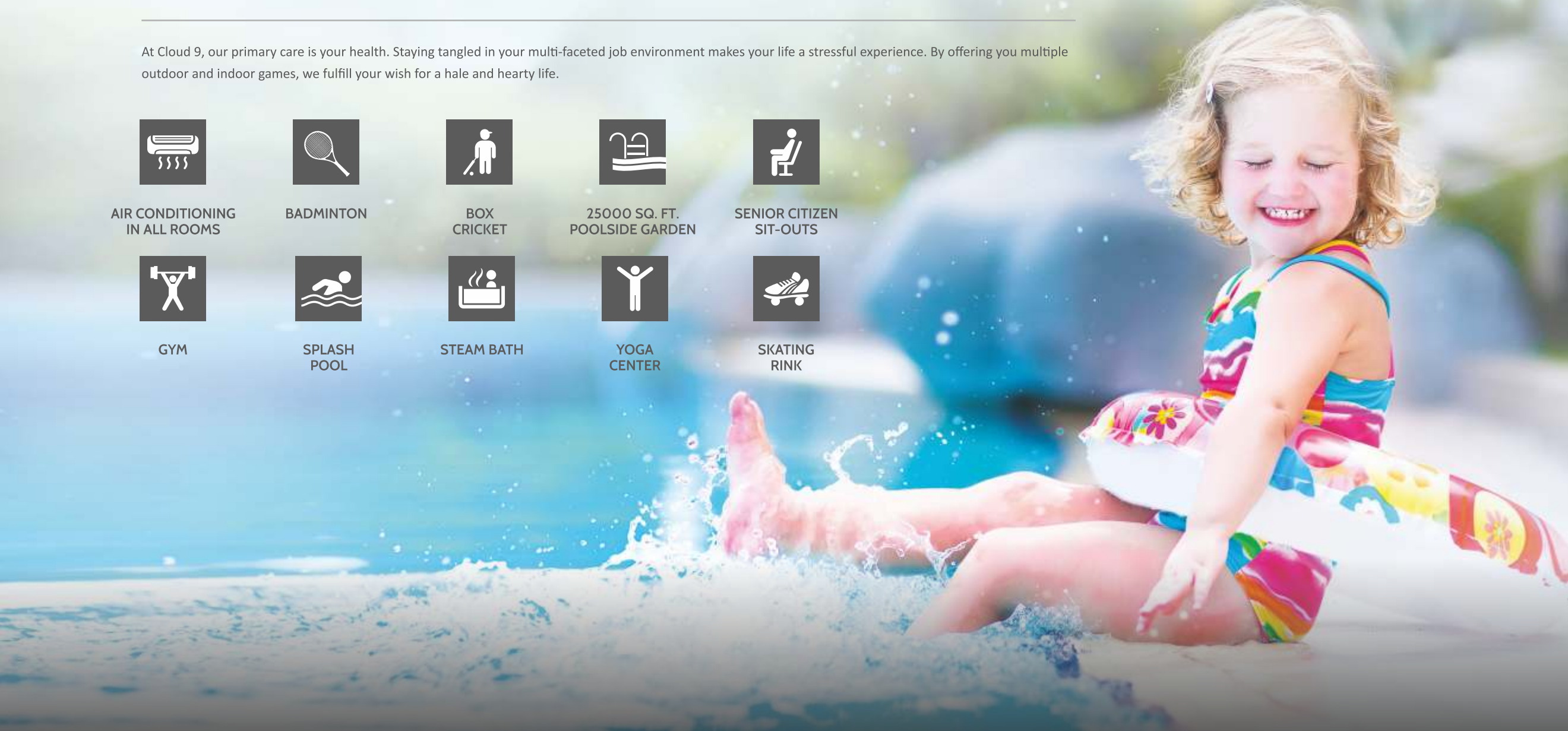
STEAM BATH



YOGA  
CENTER



SKATING  
RINK





# A WISH FOR A SUPERIOR LIFE

Leading a superior life is the first necessity of luxury living. Amenities that are designed to be statuesque & time-efficient helping you lead a serene life are a very integral part of Cloud 9's core concept of lavish lifestyle.



FULLY-EQUIPPED  
LIBRARY



DAY CARE  
CENTER



CAR WASH  
FACILITY



DOUBLE HEIGHT 2 LEVEL  
BASEMENT PARKING



SPECIAL 'NO  
VEHICLE' ZONE



WHERE YOUR EVERYDAY COMFORT IS TURNING  
**EVERYONE'S HEAD**



# A WISH FOR UNPARALLELED QUALITY

## DOORS

- Main entrance door 35mm thick flush door with veneer / molded skin on both sides
- All other doors 32mm thick flush doors with color on both sides
- Matt stainless steel handles and locks

## BATHROOMS

- Designer vitrified tiles 600x600mm on floor and walls up to lintel level
- Granite / composite marble basin counters in master bedroom
- American standard or equivalent quality bathroom and sanitary fittings

## AIR CONDITIONING

- Air conditioning in all rooms

## ELECTRICAL WORK

- Branded modular switches
- 3 Phase concealed copper wiring with adequate number of points in all rooms
- Provisions for TV / cable / telephone points in each room

## INTERNAL AND EXTERNAL FINISHES

- All internal walls and ceiling plastered with putty finish
- Double coat textured plaster
- Exterior walls will be painted with 100% acrylic based apex paint

## BALCONY

- Natural rustic stone flooring with soft landscape

## KITCHEN

- Modular kitchen with polished granite platforms with S.S. sink with drain board and electronic chimney
- Vitrified tiles dado up to the lintel level on the walls above kitchen counter
- 800x800mm Matt finish vitrified tiles flooring

## PLUMBING WORK

- U.P.V.C. water supply pipes and PVC pipes for soil, waste and drainage systems
- Hydropneumatic system percolation wells as per the norms

## STORE & WASH AREA

- Granite flooring in wash area and dado of ceramic tiles
- Provisions for R.O. plant system, geysers and washing machine

## WINDOWS

- European standard or equivalent quality anodized aluminum sliding windows with 5mm thick glass on stone jambs

## FLOORING

- Italian marble flooring in drawing & dining rooms
- Wooden flooring in master bedroom
- 800x800 mm Matt finish vitrified tiles flooring in all other bedrooms

## ROOF

- 3" Thick (avg.) layer of brick-bat concrete with China mosaic for heat reflection and thermal insulation

# A WISH FOR A FULFILLING LIFE

If you live in an atmosphere of luxury, much emphasis has to be laid on safety and rejuvenation. We take care of maintaining the zest of your life by offering you a larger-than-life club which caters to each and every member of your family. The Club welcomes you with best-in-class amenities, which speak of luxury and comfort space. Enjoy this bundle of joy which will evoke the best in you.

- DROP-OFF ZONE
- EARTHQUAKE-RESISTANT CONSTRUCTION
- DTH CONNECTION
- GENERATOR BACK-UP FOR COMMON SERVICE
- CCTV SURVEILLANCE
- VIDEO DOOR PHONE
- 3 LAYER SECURITY
- FIRE SAFETY PROVISION
- WIDE INTERNAL ROADS







WHERE YOUR ADDRESS BECOMES  
**A STATEMENT**





**VIVAN INFRASTRUCTURE PVT. LTD.**

Vivan Infrastructure has redefined residential and commercial property landscape of Ahmedabad. We have many prestigious projects to our credit, which have been admired for their quality, innovation and strategic location. Driven by the belief to create a holistic service system which is client centric, we endeavor to maximize customer satisfaction and create a niche for ourselves in the market.



**VIVAN SQUARE**  
(Commercial) @ Jodhpur Satellite



**VIVAN KARMA BUNGLOWS**  
(Residential) @ Vastrapur



**VIVAN NATURA**  
Eco Plotting & Club Life Style  
@ Nal Sarovar Road



**MAGNOLIA RESIDENCY**  
(Residential) @ Jodhpur Satellite



**VIVAN BHAGWATI RETREAT**  
(Residential) @ Ambaji



**ADDOR REALTY PVT. LTD.**

At Addor, 'creating others' world' is our working tradition. The company harnesses its efforts in the direction of exceeding customer expectations by bringing novel possibilities to life. Our focus is on creating an identity that is synonymous quality, commitment, growth and innovation. We believe in designing and creating lifestyle properties rather than boxed spaces.



**ADDOR 14 CROWNS**  
(Residential)  
@ Gujarat University, University Road



**ADDOR EDENS**  
(Plots & Villa) @ Sanand



**ADDOR AMBITION**  
(Commercial) @ Navrang Circle



**ADDOR ASPIRE**  
(Commercial)  
@ Gujarat University, University Road



**ADDOR HYDE PARK**  
(Residential) @ Goraj, Sanand



**ADDOR 16 SOLITAIRE**  
(Residential) @ Bhatt