



SHEETAL
INFRASTRUCTURE
CREATING NEW INDIA

www.heetalinfra.com

PR/GJ/AHMEDABAD/AHMEDABAD CITY/AUDA/RAA09547/251221
www.gujrera.gujarat.gov.in

To Book, An Appointment...
+91 99980 02220

 /sheetalinfra



Scan
For Brochure



Scan
For Location

mfdesign@990949002

Series of Beginning...



In a fast-paced world where people are branching out of their homes to live separately, We want to introduce you to "GHARANA" as our passion to create landmarks that meet global standards and are built on a legacy of Trust

There is no greater joy than rekindling and reconciling with your loved ones

Sheetal Infrastructure wants to bring that joy and delight to you
Gharana is for those who truly deserve the luxury of living with their family

It is for those who want to experience luxury, not just alone, but with their kin
Come join us on this adventure as we unfold the most premium living to you

A Powerful Emblem of Ahmedabad's Unfettered Aspirations and
Indomitable Drive, "GHARANA" soar and redefine City's Skyline

Paras Pandit



Why?
gharana

Grandeur, Glamour and Glory.

A True Celebration of '**LIFE**'.
Living with your kin is going to get redefined.

A sculptural statement so powerful, it will transform Ahmedabad's Skyline Forever.

Give your heirs and heiresses their own '**GHARANA**'.

We could tell you a lot more in words,
but we'd like for you to turn the page
and see for yourself.





* Artistic Impression



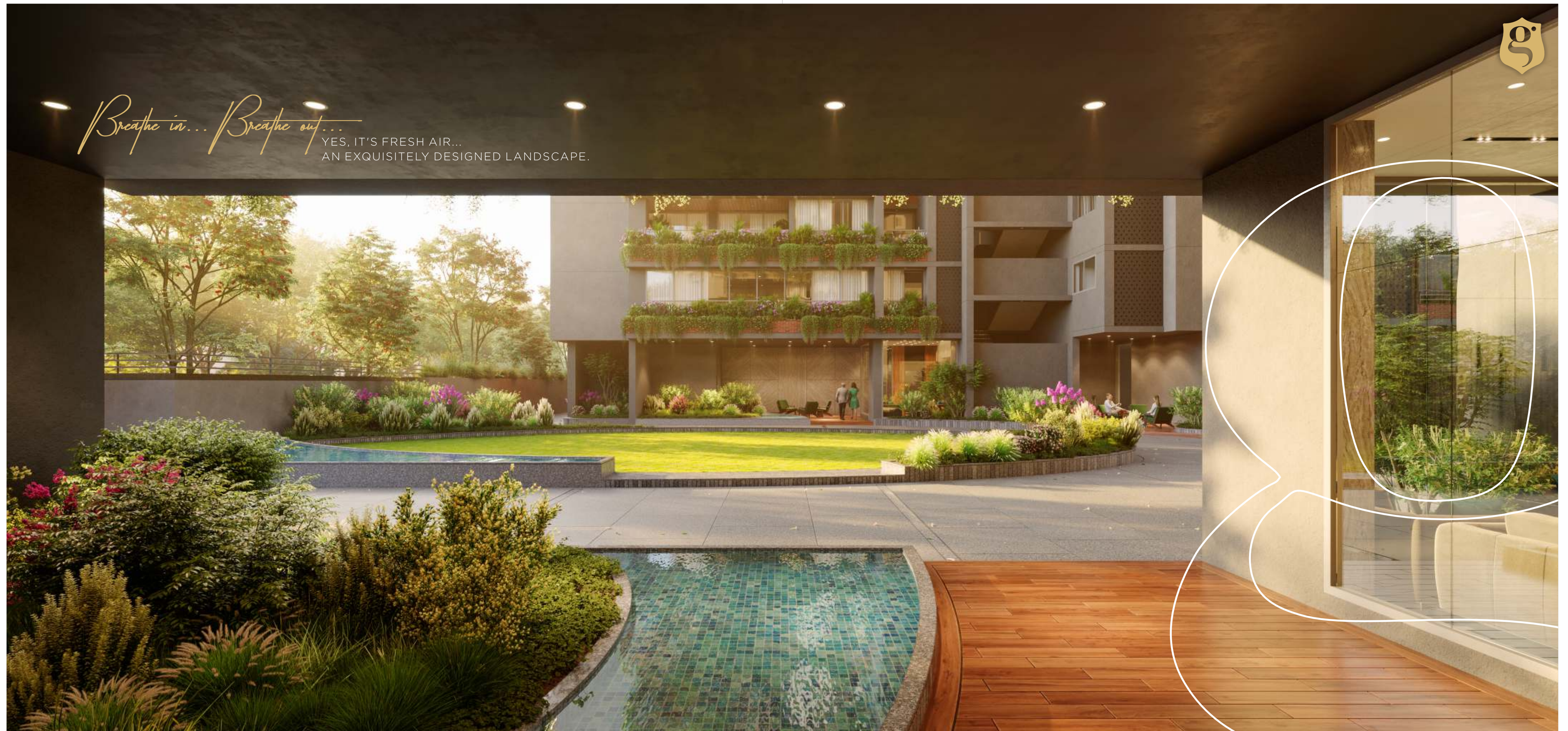
Connoisseurs
OF CULTURE, AN EPITOME OF EXCELLENCE,
IT'S A BOUQUET OF LIFELONG EXPERIENCES.

* Artistic Impression



Breathe in... Breathe out...

YES, IT'S FRESH AIR...
AN EXQUISITELY DESIGNED LANDSCAPE.

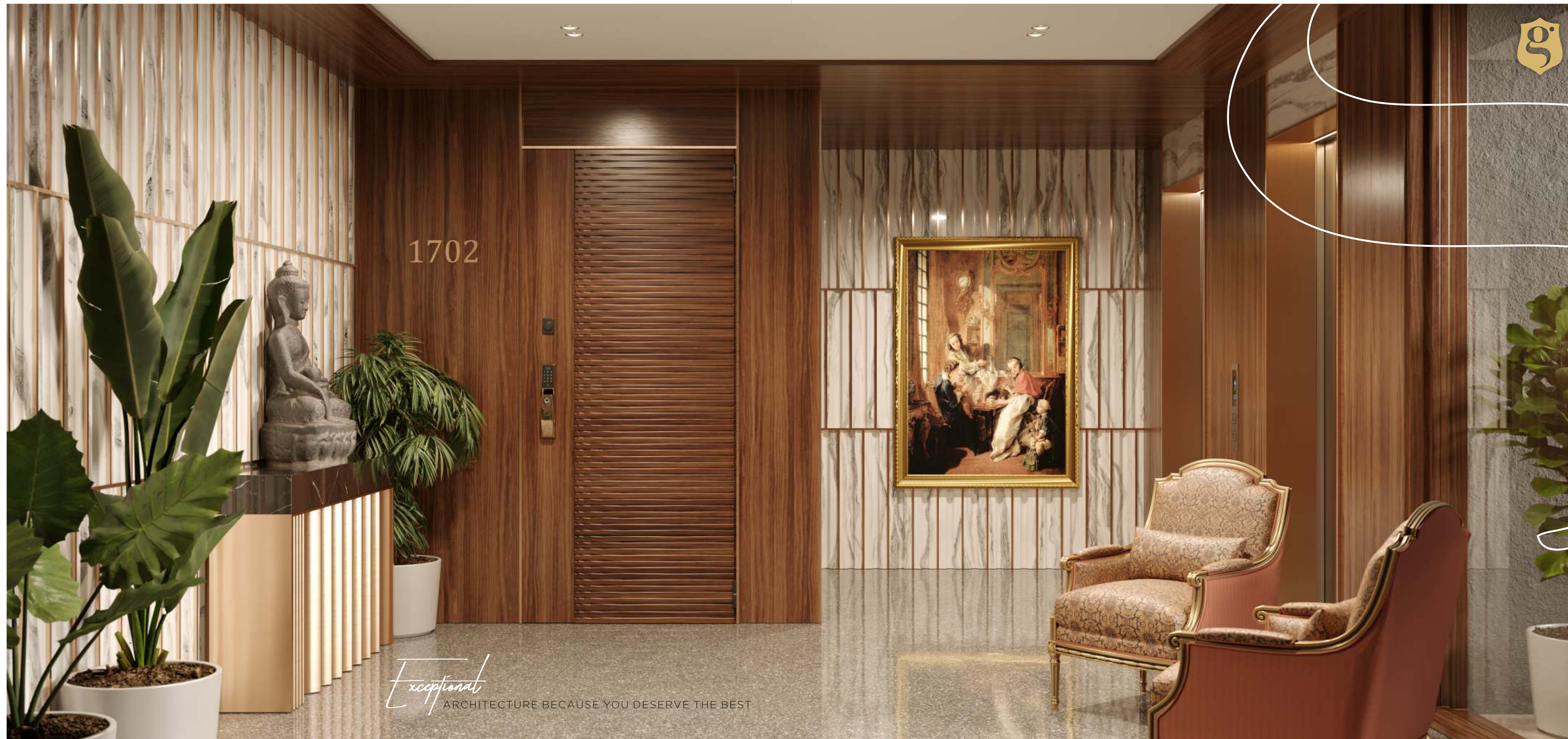


* Artistic Impression



Foyer
More than a landmark,
It's an icon of excellence.

* Artistic Impression



Exceptional
ARCHITECTURE BECAUSE YOU DESERVE THE BEST.

* Artistic Impression



World class
LIVING EXPERIENCE FOR LIFE!



* Artistic Impression



* Artistic Impression

2
TOWERS

—
21
STOREYS

—
2
APARTMENTS PER FLOOR





* Artistic Impression

Like Minded

neighbours you'll get along with.



A glorious coalescence of modern luxury and international finesse. This development offers a limited edition 5 & 6 bhk sky villas, quite unlike any in the city.

Swimming Pool

With a stunning experience of the views ahead, the leisurely pool invites you to indulge in a complete sense of bliss.



* Artistic Impression



* Artistic Impression

Cafe

Adding the perfect ingredients to live life just the way it should be, there's never a mundane moment in the soulful brasserie.



Library

Rich atheneum with expansive views across a glass facade takes your reading experiences to the next level.

* Artistic Impression



Gymnasium

Fitness regimes at exclusive spaces are always invigorating.

* Artistic Impression



Theater

Rejuvenate yourself in the best comfort and tranquility, festooned with the best, clean and modern architecture.

* Artistic Impression



* Artistic Impression

Banquet

Pamper your body and mind in graciously designed spaces with natural light and ventilation.



Amenities

Uber-modern, ultra-luxurious project offering rare luxury spaces that will turn your everyday life into a charmic mosaic of moments.



INDOOR GAMES AND PLAY AREA



WELCOMING ENTRANCE.



CENTRALLY AIR-CONDITIONED CLUB HOUSE.



LOUNGE WITH AMPLE SITTINGS AND WELL STOCKED LIBRARY.



A FULLY EQUIPPED GYMNASIUM WITH AEROBICS HALL.



STRESS RELIEVING JACUZZI.



CHILDREN PLAY AREA.



INDOOR SWIMMING POOL WITH KIDS POOL.



LIFELIKE VISUAL AND SOUND EXPERIENCING CINEMATIC HOME THEATER.



TODDLER'S AREA.



A MULTIPURPOSE HALL INSIDE THE PROPERTY FOR HOSTING EVERYTHING WORTH CELEBRATING.



SPA WITH STEAM SAUNA & MASSAGE ROOM.

* Sheetal Infrastructure reserves the right to Change/Alter/Omit or Add any specifications or any other details and it will be abiding to buyers all the times.



* Artistic Impression

Features

- 75 meter height of a building giving an open view from all four sides.
- Exclusive of 72 units which includes 4 limited lavish penthouse & duplex.
- 2 units per floor.
- 5 Lifts and 2 staircases of each tower.
- Personal foyer in each apartment upto 250 sq. ft.
- 2 high speed elevators that open to the personal foyer of each wing.
- Exclusive service elevators.
- Adequate spaces for residents and visitors in 4 levels of parking.
- 4 car parking for each apartment.
- VRV air conditioning system.
- Italian marble and Royal wooden flooring in all rooms except wet areas.
- Hansgrohe/Grohe/Duravit/Toto or equivalent bathroom fittings.
- Column less area of formal living, family living and dining room.
- High-tech security system.
- CCTV surveillance at strategic locations.
- 3 Phase power connection.
- Generator Power back up for common amenities.
- Pressurized water distribution.
- Rain water harvesting.
- Heat pump & centrally hot water system.
- DGU glazing in windows.
- Floor to floor height 10'11.

* Sheetal Infrastructure reserves the right to Change/Alter/Omit or Add any specifications or any other details and it will be abiding to buyers all the times.



* Artistic Impression



Iscon Radhe Krishna Temple

PRL Childrens Playgrounds

Iscon Temple

Vikramnagar Football Ground

Overhead Water Tank

Devarc Mall

Children Play Area Vikramnagar

AMBLI ROAD

Iscon Cross Road

Double Tree By Hilton Ahmedabad

ISRO Colony

Shreeji Baug

Wide Angle

Adecco India

Iscon Char. Vasta Water Distribution Station

Novotel Hotel

AMBLI ROAD

SARKHEJ - GANDHINAGAR HIGHWAY

PSP House



Puniska Healthcare PVT.

Karnavati Club



* Artistic Impression

ARCHITECT



architect pvt. ltd.

MOHIT GAJJAR

STRUCTURAL ENGINEERS



CONSTRUCTION BY



INTERIORS BY

studio Nilesh kava / parita kava





* Artistic Impression



Sheetal Infrastructure:

Sheetal Infrastructure began its journey in the real estate sector with its flagship project being a residential project "Vedika Exotica".....

Sheetal infrastructure has become a renowned name in real estate development with an array of world-class projects . Our unprecedented success has a surprisingly simple explanation - consistently high performance and a strong commitment to customer service has attracted and retained more clients and project opportunities every year. At the same time we are also committed to environmental protection and ensure that our projects adhere to the very best environmental practices. Today, renowned for understanding Clients needs and realizing their dreams, Sheetal infrastructure prides itself on having an array of world-class projects in its portfolio. Luxury is a priority and no compromises are made when it comes to the comfort of our valued customers. We continue to builder bigger, better projects that are poised to become landmarks in Ahmedabad real estate and beyond. Customers continue to place their trust in us, and our stake holders continue to drive our growth with their confidence in us.

FOLLOW US ON     /SHEETALINFRA

CORPORATE OFFICE:
 25, 4TH FLOOR, SHUKAN MALL,
 NR. RAJASTHAN HOSPITAL,
 SHAHIBAUG, AHMEDABAD.
 CALL: **+91 99980 02220**
 E-MAIL: **info@sheetalinfra.com**

Disclaimer

"This is not an advertisement within the meaning of RERA. This is not an offer, an invitation to offer and/or commitment of any nature. The images are for primary impressions and for representation purpose only. This information is presented as indicative general information and no warranty is expressly or impliedly given that the completed development will comply in any degree with such artist's impression or represented images as depicted. All content relating to this project are provided solely for the purpose of information and reference. The brochure is subject to change in case of revised plan and RERA project alteration. We reserve the right to provide certain insertions of detailed layout plan pertaining to the specific unit/building/wing to the recipient. The sale is subject to terms of application form and Agreement for sale. The recipient is deemed to have been notified and agreeable to the same."

Awards and Accolades

