

ईन्द्रप्रस्थ 
Saptak

Uplifting the lifestyle...



Started in 1980, Deep Group has been instrumental in developing holistic residential structures that ensure high-end lifestyles for its residents. Our projects in the last four decades have changed the architectural horizon of the city, as we retain our inherent values and ethics along with lofty standards. Our work has spanned high-rise apartments, bungalows, farm houses and large commercial spaces for the urban community.

What stands out even today is our undeterred commitment for quality and unique architectural innovations, and we promise to deliver, even in the future.



A spectacular residential project in the heart of the city, Indraprasth Saptak includes outstanding 3 & 4 BHK apartments, near AEC cross roads, Naranpura. The project spans 280 units of 3 BHK apartments and 168 units of lavish 4 BHK apartments in each of these elegant structures. The project ensures enough green spaces, a temple, two road corners and varied amenities that fulfill the requirements of each of the elite residents of the project.

The magnificent complex will house elite communities which will make their presence felt with an enhanced lifestyle, different from those in the vicinity.



Architect &
Landscape Designer



Indraprasth Saptak is one towering edifice that will lord over other developments. We envisioned homes that are user-friendly with enough light and ventilation in each apartment from every direction. Since we already stay in an urban jungle, the project includes balconies for each apartment for natural greens to thrive among pots and other vegetation. We have also planned aesthetic bathrooms along with high quality windows in bedrooms to ensure sound sleep for all residents. What's more, our large foyers on every floor ensure that all apartments have enough external space, and enough privacy too!

A hand is shown in the foreground, holding a silver compass and drawing a line on a set of architectural blueprints. The blueprints are spread out on a table, and a red and black spirit level is visible in the lower right. In the background, a yellow hard hat is placed on a surface, and a window with bright light is visible. The overall scene is a professional architectural workspace.

THE **CREATION** STORY

Indraprasth Saptak is born out of immense planning, foresight, and vision ensuring a grandiose and glittering residential avenue for all. We balance the luxurious amenities, elevation, and environment for delivering a holistic project for residents.



Larger than the Life-Style!

Indraprasth Saptak features a grand arrival plaza to welcome its elite residents, ensuring that every aspect of the avenue is balanced with greenery and luxury, providing holistic comfort and convenience in their lifestyle!

Endearing like the Elevation!

Indraprasth Saptak balances the elevation with brilliance in its towering heights and its innovative style that defines the standout architectural elevation of the area itself!



GROUND FLOOR PLAN

LEGEND

- 01 Entry Plaza
- 02 Grand Court
- 03 Arrival Porch
- 04 Relaxing Lounge
- 05 TV Lounge
- 06 Cafe
- 07 Rest Room
- 08 Society Meeting Lounge
- 09 Meter Room
- 10 Green Promenade
- 11 Yoga Deck
- 12 Bougainville Pavilion
- 13 Green Walkway
- 14 Verandah for Sitting
- 15 Skating Rink
- 16 Green Verandah
- 17 Banquet Hall
- 18 Cooking Space
- 19 Verandah
- 20 His Rest Room
- 21 Her Rest Room
- 22 Open Squash Court
- 23 Work-from-home Lounge
- 24 Art & Craft Lounge
- 25 Lawn
- 26 Banana Forest
- 27 Grand Lawn
- 28 Indoor Games
- 29 Garden Arrival Canopy
- 30 Toddlers Play Area
- 31 Children Play Area
- 32 His Changing Room
- 33 Her Changing Room
- 34 Steam Room
- 35 Kids' Pool
- 36 Swimming Pool
- 37 Urban Forest
- 38 Paved Area
- 39 Home Theatre
- 40 Sculpture
- 41 Walkway
- 42 Two Multi-purpose Courts
- 43 Semi Covered Sitting Area
- 44 Temple
- 45 Security Cabin
- 46 Parking
- 47 Servant Lounge
- 48 Electrical Substation
- 49 Garbage Collection
- 50 Exit Plaza

40.23 MT T.P.S. ROAD



12.19 MT T.P.S. ROAD



TYPICAL FLOOR PLAN

40.23 MT T.P.S. ROAD





THE
LIFESTYLE
STORY

Indraprasth Saptak features a story of class and sophistication in every contour and angle of its construction, along with the confines of the green environment.



Grander than the Glory!

The welcome lounge for the residents and the guests defines the scale and magnificence of the project in spades, allowing everyone to reflect on the sheer creativity of it all!



Greener than the Gardens!

The subtle and charismatic walkway with sitting areas in the lawns have a verdant environment that could add sustenance to the lives of the residents, while ensuring calming leisure for every moment!



Engrossing in the Entertainment!

Indraprasth Saptak blesses every resident with the brilliance of its joyful facade, rendering every element with work and play.



Relaxing in the Ripples!

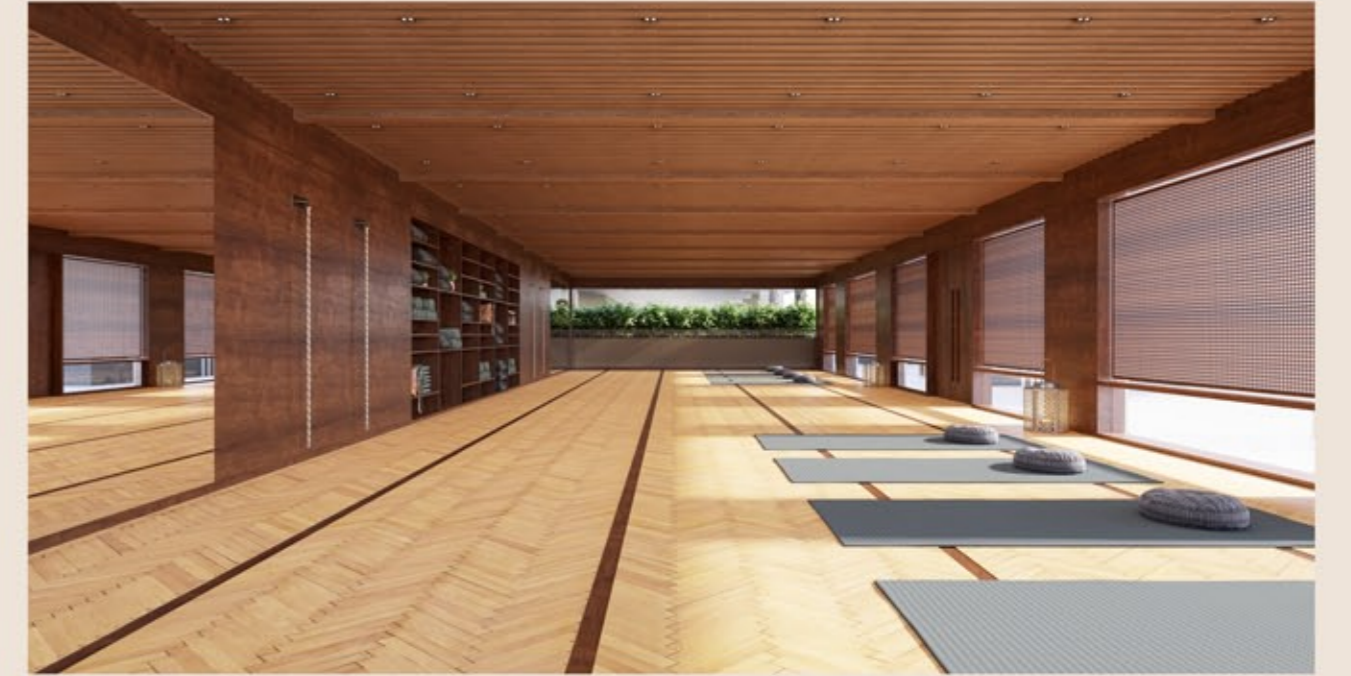
Every resident of Indraprasth Saptak would love the waves rushing on to refresh their senses at any point in time!





Transformative in its Tranquility!

Indraprasth Saptak ensures equilibrium for every resident through its tranquil avenues of wellness and yoga!





LIFESTYLE

- Grand Court
- Arrival Porch
- Relaxing Lounge
- TV Lounge
- Work-from-home Lounge
- Art & Craft Lounge
- Open Paved Plaza
- Open Verandah



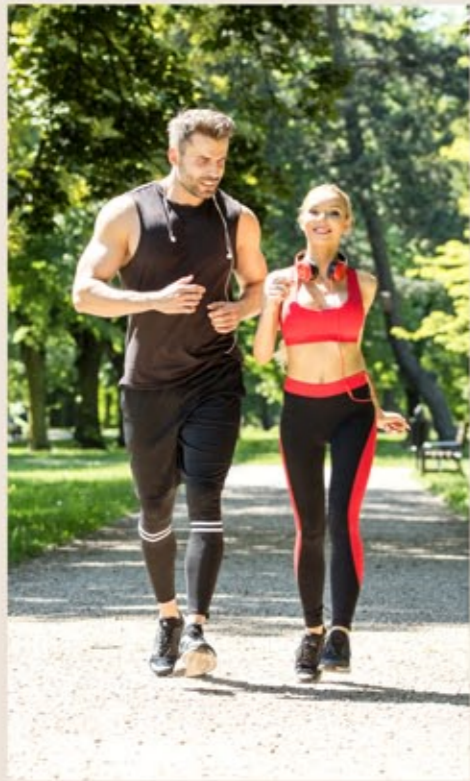
ENTERTAINMENT

- Cafe
- Banquet Hall with Kitchen Space
- Open Squash Court
- Home Theatre
- Two Multipurpose Courts
 - Box Cricket
 - Badminton
 - Volleyball
 - Basketball
- Children Play Area
- Toddlers Play Area
- Indoor Games



GREENERY

- Water Feature/ Sculpture
- Temple
- Senior Citizen Seating
- Lawn
- Urban Forest
- Green Walkway
- Paved Area
- Canopy Sitting
- Plantation



HEALTH

- Large Yoga Deck
- Gymnasium
- Steam Room with Changing Room
- Swimming Pool
- Poolside Plaza





THE **HABITAT** STORY

Indraprasth Saptak features classy abodes that embrace their elegance to pay heed to aesthetics, architecture, and amenities in equal measure!



Foresighted in its Feel!

Indraprasth Saptak has you covered with an effective residential plan, outlining spacious elements that make you feel safe, secure, and vibrant everyday!



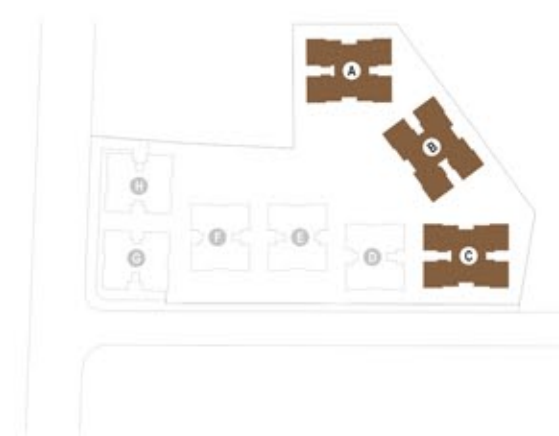
Mesmerizing in its Modernity!

Let the dining experience and your relaxing space speak volumes about its modern setting, that inspires you with a refined lifestyle!





4 BHK UNIT PLAN
BLOCK - A | B | C



3 BHK UNIT PLAN
BLOCK - D | E | F



3 BHK UNIT PLAN
BLOCK - G | H



PROJECT ATTRIBUTES



INTERIOR FEATURES

- 2 Master Bedrooms
- Lavish Balcony
- Wooden Laminate Flooring in both Master Bedrooms
- T.V. Cable Points in Drawing room & Master Bedroom
- Veneer finished Flush Doors
- Double-charged Vitrified Tiles in Drawing, Dining, Kitchen and Passage area and Bedrooms
- Granite Platform with Dedo
- Aluminium Windows



BATHROOM FEATURES

- Separate dry/ wet area in all Bathrooms
- Good quality Sanitaryware, CP Fittings & Tiles



SECURITY FEATURES

- 24 x 7 Security Service
- VDP (Video Door Phone) for extra safety at your door step
- CCTV Camera in entire Campus
- Intercom services (For Apartments and for common Amenities)



GENERAL FEATURES

- 2 High speed Automatic Elevators of renowned brand in each block
- Concealed 3 Phase Power supply with adequate points as per architect's design

THE PROJECT IS IN CLOSE PROXIMITY TO

RELIGIOUS PLACES

Mirambika Jain Derasar, Kameshwar Mahadev Temple, Shree Khodiyar Temple, Swaminarayan Temple, Radha Krishna Temple

HOSPITALS

Kaizen Hospital, Vijay Shalby Hospital, Solar Hospital, Apurva Children Hospital, Arpan Hospital

GARDENS

Divyapath Garden, Shree Arvind Maharshi Garden, Pragatinagar Garden

SCHOOLS

St. Xavier's School, Terf English School, RBT Vidyalaya, Vishvaniketan Shanti Asiatic School, Shri Mirambika School

FOOD JOINTS

Havmor, Honest, Anand Sandwich, U.S Pizza, Arpit Restaurant

TERMS & CONDITIONS

- All the architectural and interior images in the brochure, are merely simulated interpretations using computer graphics to enhance the customer understanding and are not factual images.
- The colour and general appearance of the flooring and wall tiles, sanitary ware & fittings, walls, ceilings, windows, doors, internal roads, trees, shrubbery etc., shown in the simulated computer graphics images are taken from the object libraries for the purpose of presentation and the prospective buyers of the concerned property are advised to refer to the construction specifications mentioned in the brochure. Additional amenities and/ or utilities not mentioned or shown in the brochure but may be required as per the law, should be deemed to be forming part of the project by the purchaser.
- All Furniture including wardrobes, other sofa furnishings inter-alia curtains, mattresses, bed linen, upholstery etc., lights and other electrical fixtures and appliances like air conditioners, refrigerators, TVs, telephones, laptops etc., any of the equipment, household accessories inter-alia crockery and cutlery, rugs, carpets, decorative pieces and wall hangings, wall papers, utensils etc., apparels and all other consumable and movable items shown in the simulated images do not form part of the sale of any property by the developer.
- All dimensions presented herein are approximate and the measurements are made from unfurnished surfaces.
- Dimensions are unfinished wall to wall with an approximation of 5 cms.
- This is not an offer/ an invitation to offer and/ or commitment of any nature. The Information contained is of the kind of development that is proposed and issued in good faith and is for guidance only.
- All rights reserved with the developers to make any changes in the project and all the members shall abide by such changes.
- GST, AMC/ AUDA charges along-with Torrent electrical charges including cable and Sub-station cost shall be borne by purchaser. Stamp duty, registration charges, or any other charges and taxes as & when levied by government or any of its body shall be borne by purchaser/buyer/legal possession holder.
- GST at applicable rate is payable on the due amount and is non refundable.
- This brochure is for restricted private circulation only and is for an easy display of the project. It should not to be considered as a legal document with obligations for specific performance. It is meant for the purpose of conceptual presentation only.
- Subject to Ahmedabad Jurisdiction only.



PROJECT BY



DEEP BUILDERS

10th Floor, President House, Opp. C N Vidhyalaya, Ambawadi, Ahmedabad - 380 006. | Contact: 079 2644 6232/ 33
www.deepgroup1980.com

BEST WISHES FROM



SITE ADDRESS

INDRAPRASTH SAPTAK

B/s. Sahajanand Tower, Nr. Shell Petrol Pump, Nr. A.E.C. Cross Road, Naranpura Ahmedabad-380013.

Contact No.: +91 7575 05 8000

ARCHITECT & LANDSCAPE DESIGNER



Tel.: +91-79-2676 6639/ 40

STRUCTURE CONSULTANT

SETU INFRASTRUCTURE

Tel.: +91-79-26751800



RERA REGISTRATION NO.: PR/GJ/AHMEDABAD/AHMEDABAD CITY/AUDA/MAA08765/140721

RERA WEBSITE: www.gujrera.gujarat.gov.in

Designed by:
Openmind 97270 33377

PROJECT BY



BEST WISHES FROM

