

PALAK
ELINA
5 BHK PURE LIVING EXPERIENCE



LARGE • LAVISH • LUXURIOUS



PURE AS WATER



PURE AS NATURE



PURE AS AIR



PALAK **ELINA**

A Pure Living Experience

Nestled amidst nature, Palak Elina presents you a pure living experience. A luxurious lifestyle and an ultimate escape from the chaos outside, Palak Elina is meticulously planned and beautifully crafted.

Homes at Palak Elina are designed after recognizing your preferences, desires and needs. The plush amenities too match up to your exquisite taste and global lifestyle. Here, you will get Pure Holistic living at its best.



PALAK **ELINA**

An Architectural Marvel

Palak Elina - the second name to architectural avant-garde is a community of high-end luxurious residences. Every house is an epitome of brilliance and perfection.

Palak Elina, it's a regal homecoming to your lifestyle, a paradise elegantly crafted for you.





Site Plan

Palak Elina is a world of refinement and elegance. Remarkable residences and top-class amenities, complete the lifestyle here, which is further enhanced by its ideal location.





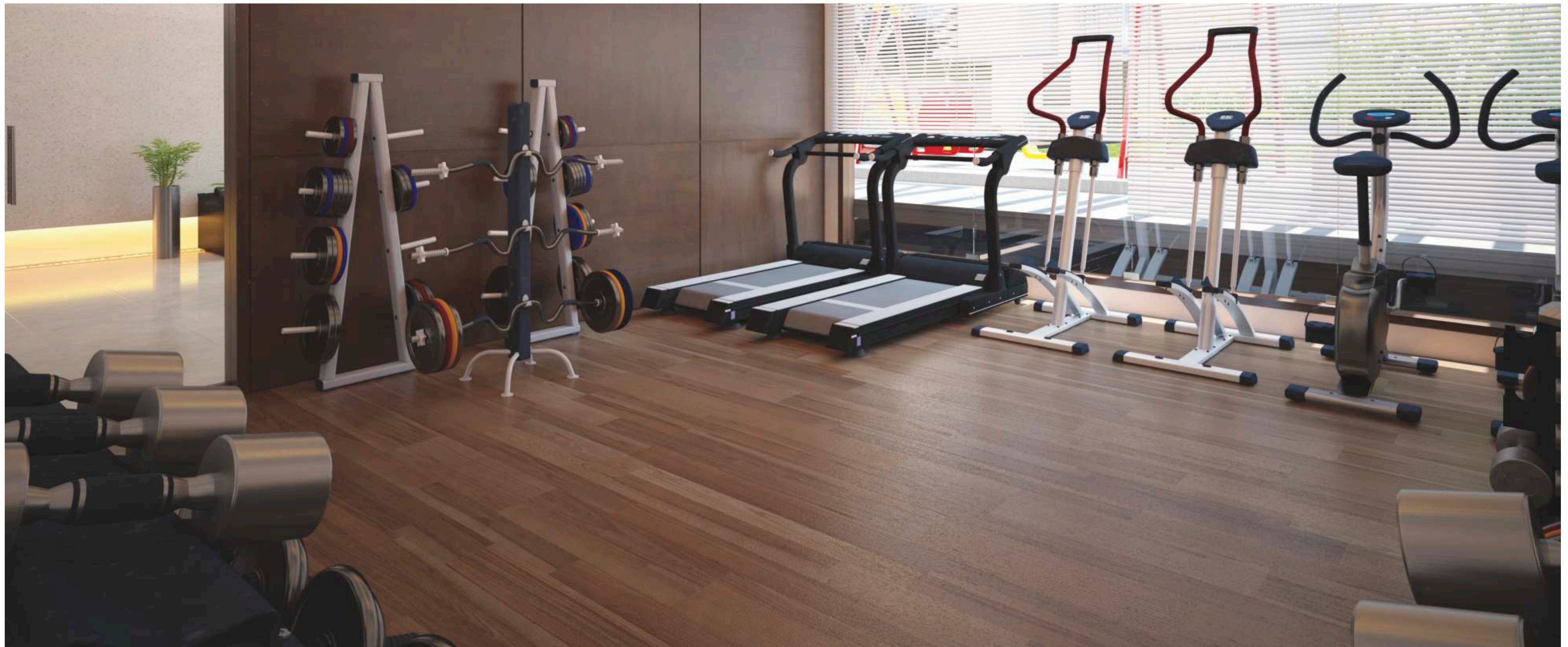
GARDEN



SWIMMING POOL



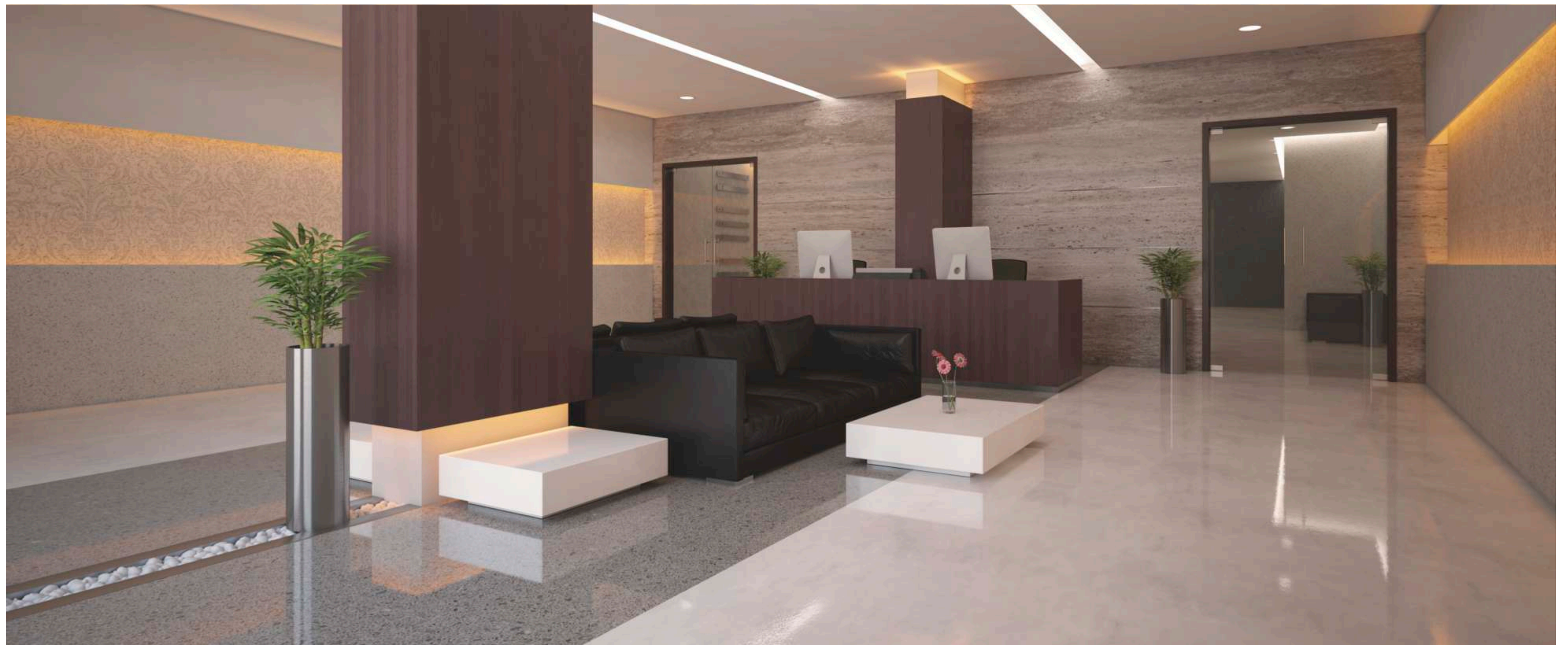
MINI THEATER



GYMNASIUM



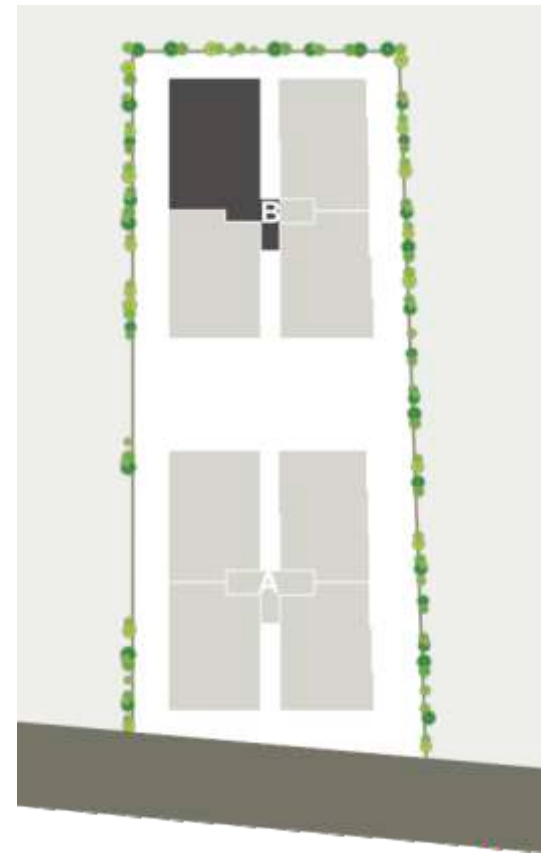
RECEPTION AREA



ENTRANCE FOYER

Palak Elina is a world of refinement and elegance. Remarkable residences and top-class amenities, complete the lifestyle here, which is further enhanced by its ideal location.





Unit Plan

1	VESTIBULE	6' 9" × 12' 7"	10	BED ROOM - 2	21' 0" × 12' 0"
2	DRG ROOM	12' 0" × 21' 0"	10A	TOILET WITH DRESS	10' 6" × 7' 7"
3	LIVING	13' 0" × 25' 0"	11	M. BED ROOM - 1	21' 0" × 14' 0"
4	VERANDAH	25' 0" × 10' 0"	11A	TOILET WITH DRESS	13' 0" × 10' 6"
5	KITCHEN	12' 0" × 15' 0"	12	M. BED ROOM - 2	21' 0" × 14' 0"
5A	WASH	5' 0" × 10' 1"	12A	TOILET	13' 0" × 10' 0"
5B	STORE	5' 3" × 8' 3"	13	BED ROOM	19' 0" × 12' 0"
6	DINING	11' 0" × 17' 3"	13A	TOILET WITH DRESS	10' 0" × 7' 7"
7	POWDER	5' 0" × 4' 6"	14	SERVANT	8' 0" × 6' 0"
8	PUJA	9' 0" × 3' 6"	14A	TOILET	4' 0" × 6' 0"
9	BED ROOM - 1	17' 0" × 11' 0"			





LIVING & DINING AREA



DRAWING AND LIVING AREA



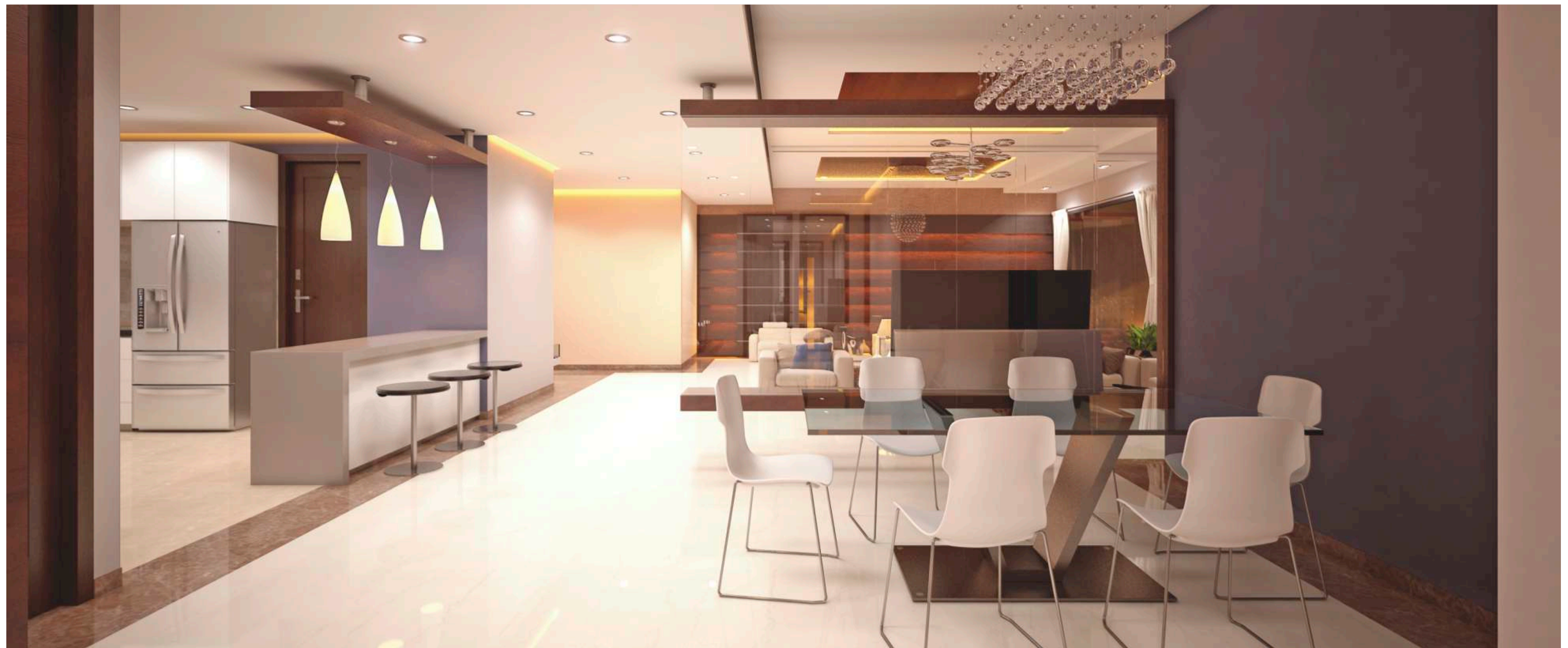
PUJA



VERANDAH



KITCHEN



DINING AREA



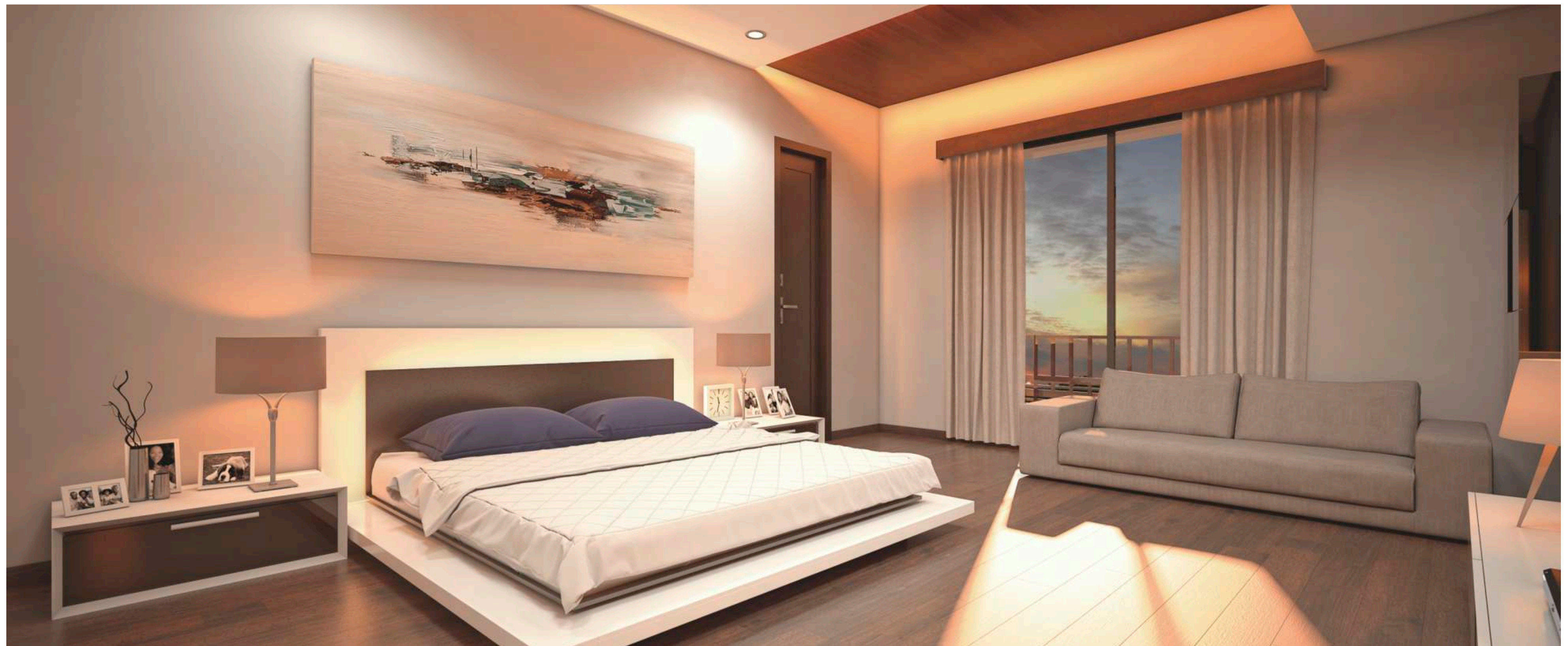
MASTER BEDROOM - 2



MASTER BEDROOM - 1



BATH & DRESS



MASTER BED ROOM-3

Specifications

Flooring

- Drawing / Living / Dining : Italian marble
- Master Bedroom 1 & 2: Laminated wooden flooring
- Other Bedrooms: 800 x 800mm vitrified tiles

Kitchen

- Granite platform, S.S. Sink with drain board
- Ceramic tiles dado up to lintel level above kitchen counter

Store and Wash Yard

- Kota Stone shelf in store room
- Kota Stone flooring in wash yard with glazed tiles

Bathroom

- Glazed tiles on floor and walls up to lintel level
- Granite/ composite marble for basin counter
- Shower panel with glass cubicle / partition in master bedroom-1
- Jaquar/ Kohler or equivalent quality bathroom fittings
- American Standard / Duravit or equivalent quality sanitary fittings

Window

- Anodized aluminum sliding windows with stone jambs

Door

- Main Door: 32mm thick flush door with veneer
- Other Doors: 32 mm thick flush doors with standard lock

Electrical

- 3 phase concealed ISI copper wiring with modular switches and M.C.B.

Air-conditioning

- Central Air-conditioning VRV system

Interior

- Single coat mala plaster with white putty

Exterior

- Double coat textured plaster with acrylic paint

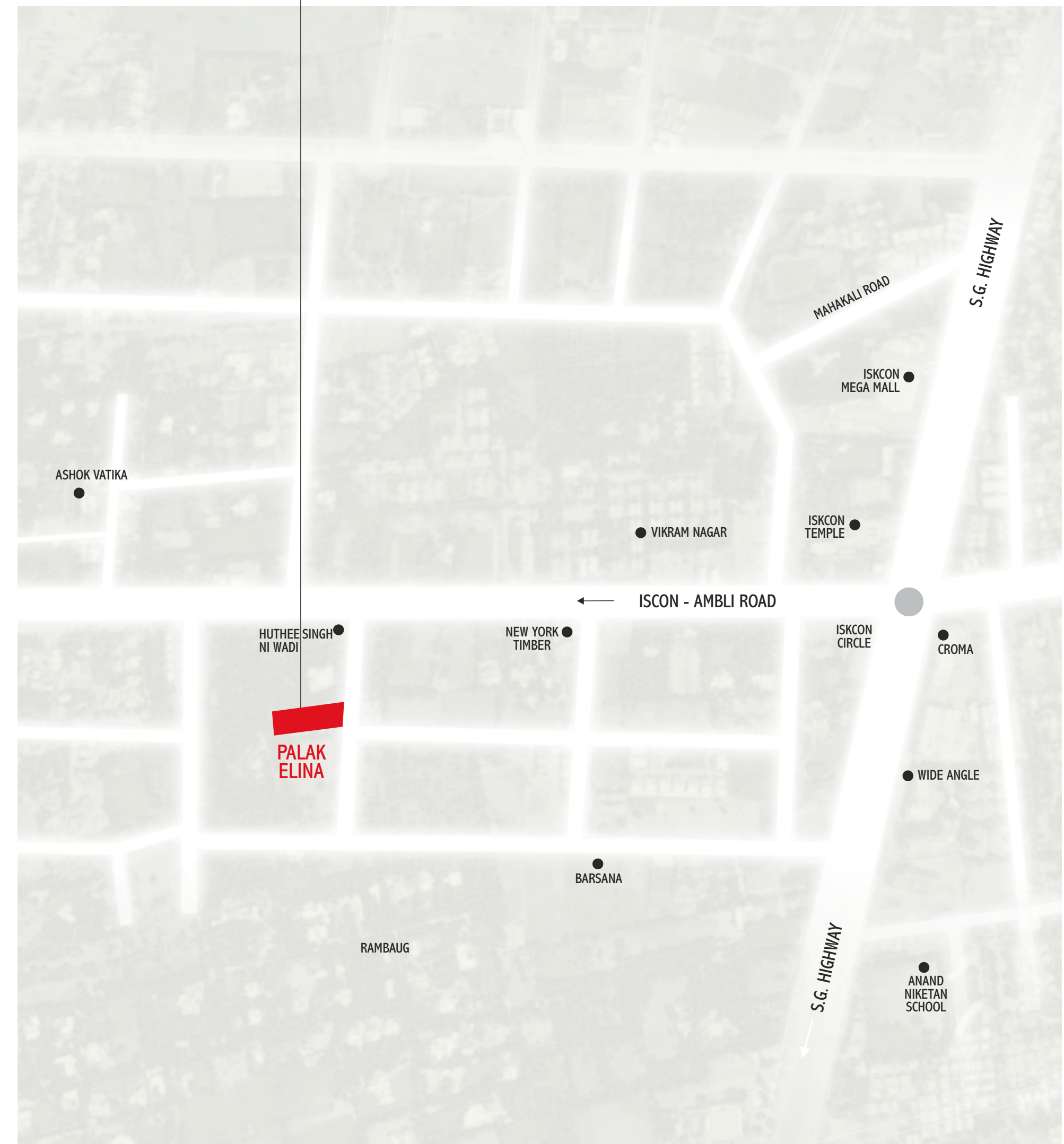
SPECIAL NOTES

- Stamp Duty, Registration charges, Other legal expenses, Service Tax, AMC Charges, Substation cost etc. shall be borne by members.
- All rights reserved with developers to make any changes in the scheme and all members shall abide by such changes.
- This brochure is for illustration purpose only and should not be treated as a legal document.
- The dimensions mentioned herein are approximate.

Salient Features

- Automatic elevators
- Elevator opening in personal foyer of each apartment
- Gymnasium with modern equipments
- Centrally DTH Satellite TV connection in drawing / living & master bedroom-1
- Exclusively designed entrance foyer
- Allotted car parking space
- Water pressure system
- Swimming pool
- Landscaped garden
- Children play area
- Mini theater
- Indoor game zone
- Mini library
- Video door phone
- CCTV in common area
- Intercom facility

Key Plan





Site Address
PALAK ELINA, Iscon - Ambli Road, Ahmedabad-380058

Developers
Shree Developers

Contact
90999 65887
www.shreedevolver.co.in

Architects
Neha Consultant
Errol Reubens Associates