

sharanya  
*Skyvue*  
live the sky life...

# COME HOME

EVERY STOREY WILL HAVE

*a story!*



## COME HOME

A marvellous landmark that articulates imperial lavishness and elegant lifestyle with its superlative elevation. Conceived intelligently and embellished with exclusive features and finishes, **Sharanya Skyvue** is a home you'll be delighted to own.

WELCOME TO SKY LIVING  
EXPERIENCE

sharanya  
*Skyvue*  
live the sky life...



G + 17 Storeyed 2 Residential Towers with 128 Flats

Thoughtfully Planned Sky Residences

Located Amidst The Serene Surroundings of Thaltej

The Tallest Residential Towers in Area



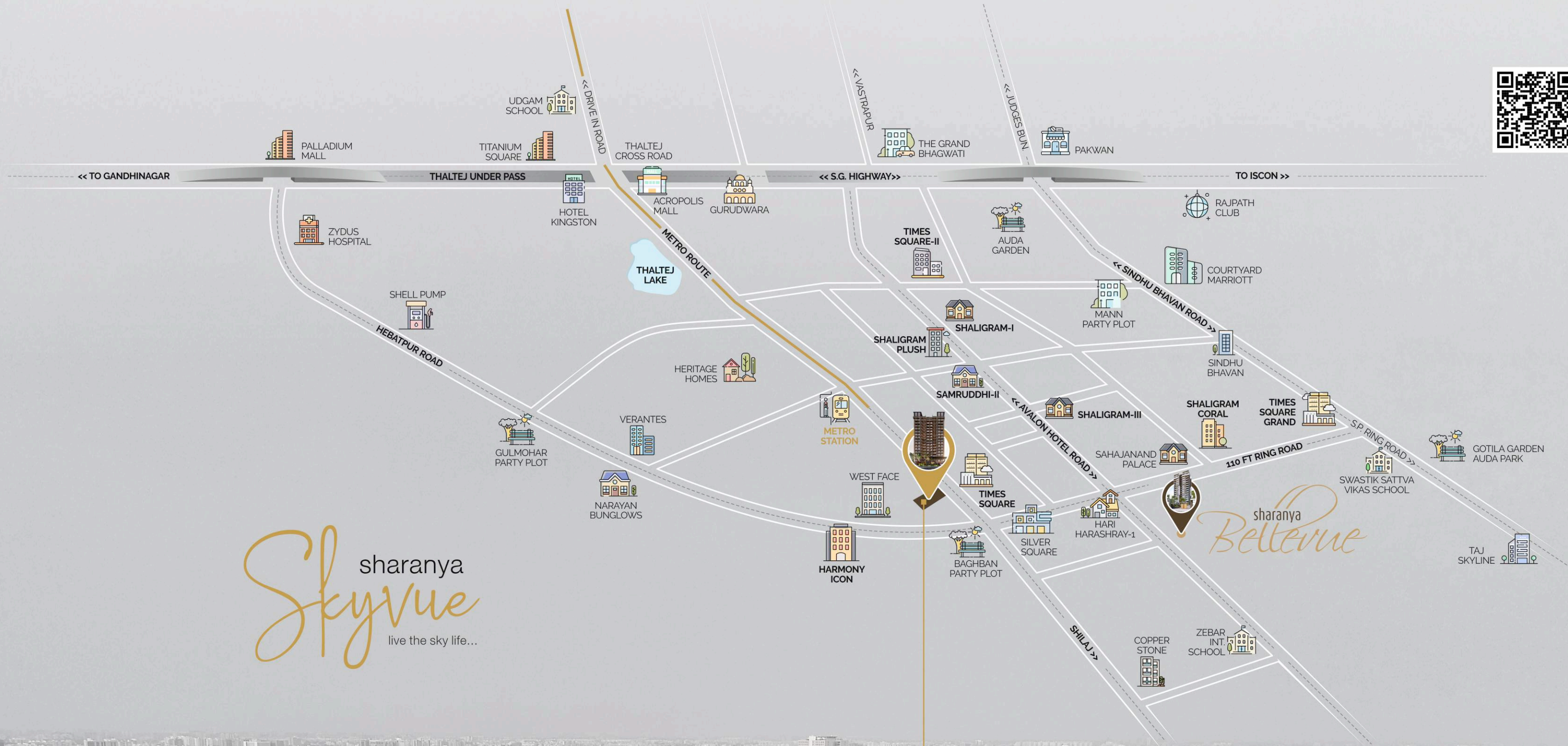
STANDING TALL;  
OUTSHINING ALL

ELEVATING YOUR  
HAPPINESS TO  
NEW HEIGHTS



A SPARKLE OF  
BEAUTY AND  
SPLENDOUR





sharanya  
*Bellevue*  
 live the sky life...



# GROUND Floor Plan



## LEGEND

- 01 ENTRANCE GATE
- 02 SECURITY CABIN
- 03 GENERATOR
- 04 WATER BODY
- 05 LETTER BOX SPACE
- 06 METER ROOM
- 07 GENTS TOILET & CHANGE
- 08 LADIES TOILET & CHANGE
- 09 RECEPTION
- 10 TODDLER ZONE
- 11 MANAGEMENT OFFICE
- 12 GYM
- 13 MULTIPURPOSE HALL
- 14 OUTDOOR KITCHEN & WASH
- 15 INDOOR GAME
- 16 CHILDREN PLAY AREA
- 17 GAZEBO
- 18 LAWN AREA
- 19 SEATING
- 20 WATER CASCADE
- 21 BADMINTON COURT
- 22 CRICKET NET
- 23 MULTI PURPOSE COURT
- 24 RAMP
- 25 TWO WHEELER PARKING



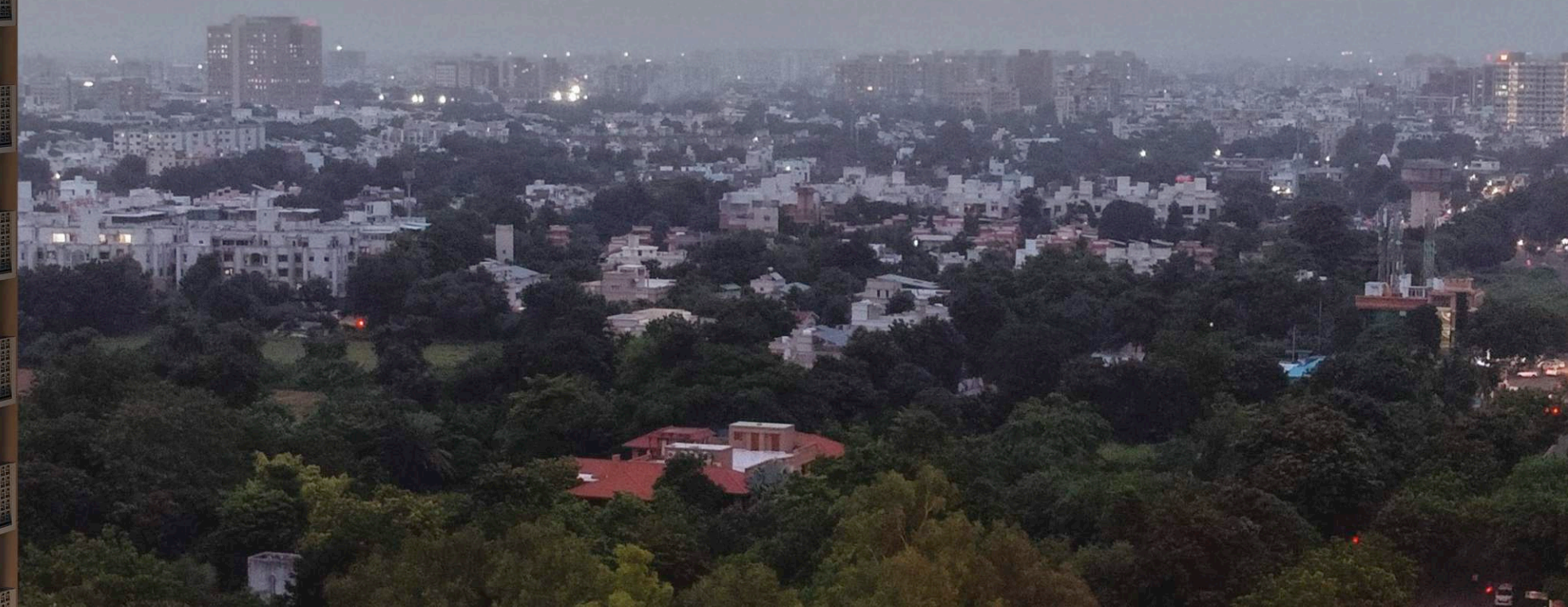
THALTEJ - SHILAJ ROAD



ELEGANT PLANNING  
WITH A TOUCH OF  
BRILLIANCE

At the top, stars feel like trees in forest, come alive with fresh air & eye soothing sky line. It doesn't get any higher or bigger than your ultra- luxurious sky villa penthouse on the top. Those who truly appreciate and adore finest luxuries of the world, deserve nothing less than an extravagant palace in the sky. **Sharanya Skyvue** it is.

|  
BE AT  
THE TOP OF  
THE WORLD  
|



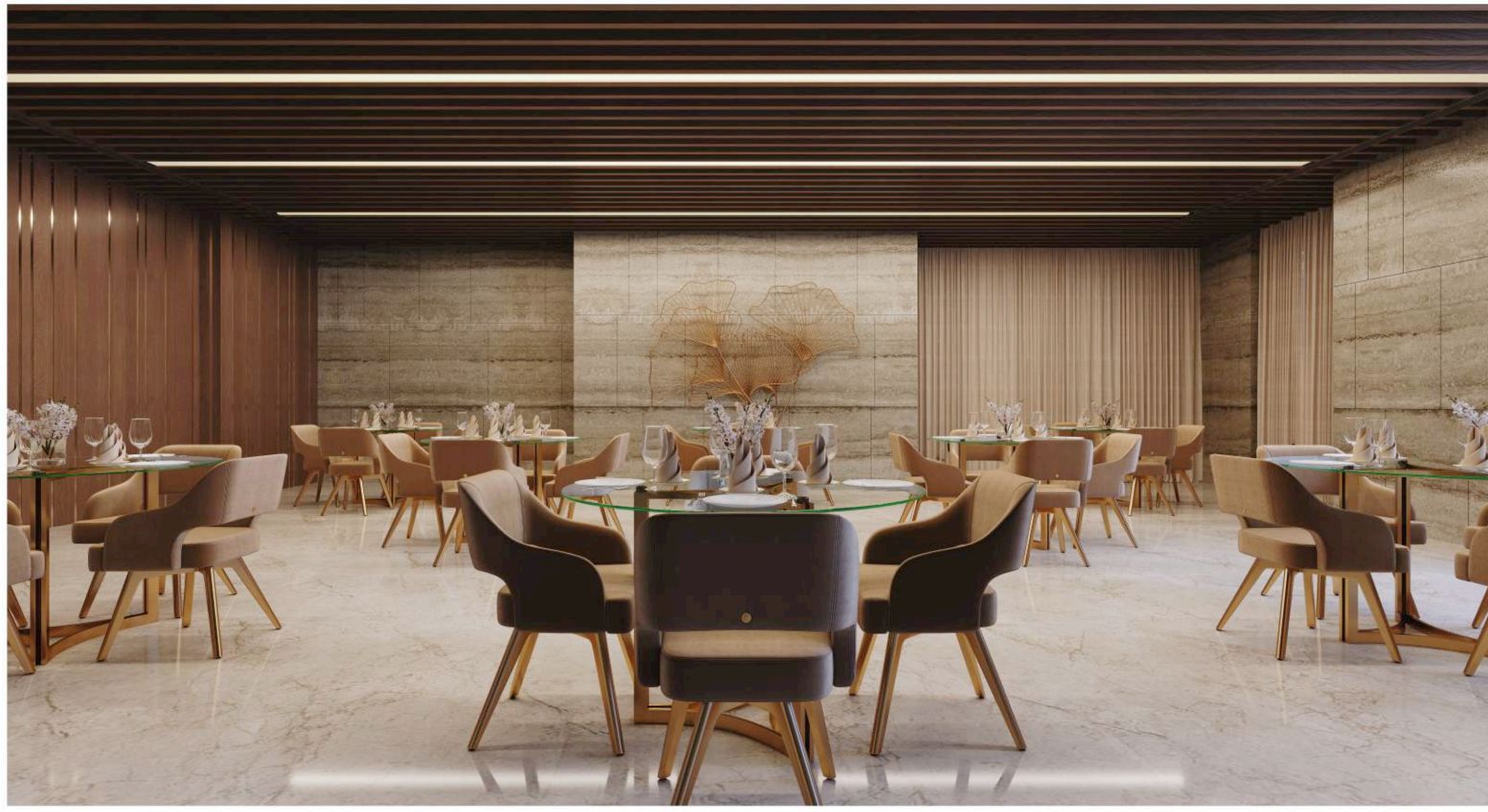


|  
A LEISURELY  
OUTDOOR  
LIVING  
|



We thought about all the ingredients that make a perfect life and gifted you with amazing amenities that lets you live the life of your dreams; on your terms. A bouquet of exciting, entertaining and joyous experience awaits you here.

- CHILDREN PLAY AREA
- MULTI PURPOSE COURT
- BADMINTON COURT
- CRICKET NET
- SENIOR CITIZEN SIT OUT
- LANDSCAPED GARDEN



WONDERFUL  
AMENITIES FOR  
INDULGENCE



BANQUET HALL  
FULLY EQUIPPED GYMNASIUM  
INDOOR GAMES



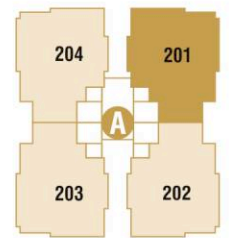
# TYPICAL Floor Plan



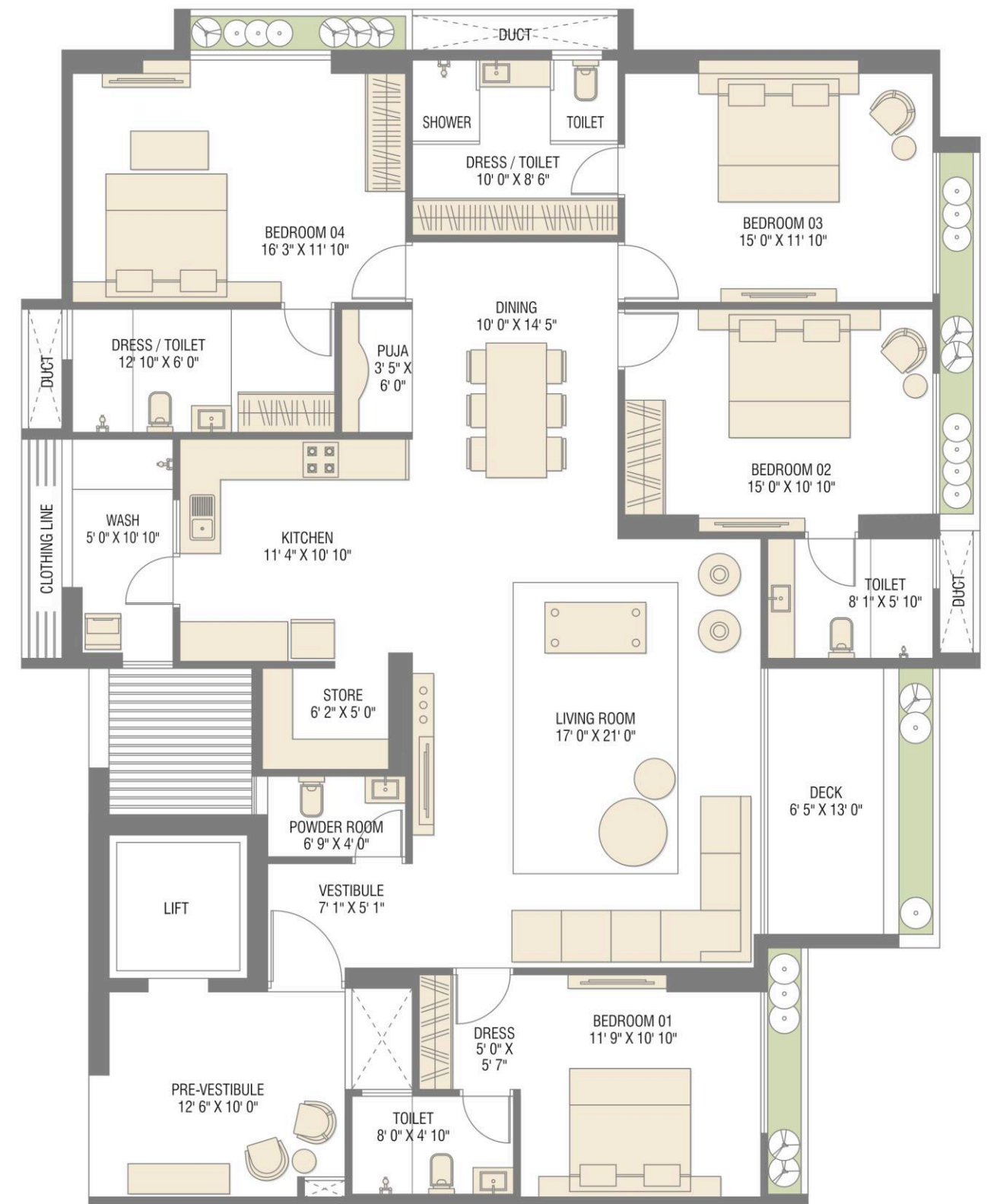
THALTEJ - SHILAJ ROAD

# 4 BHK Unit Plan

Typical Floor Plan

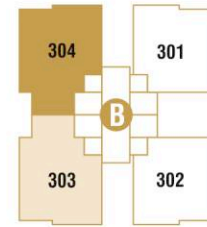


BLOCK - A



# 4 BHK Unit Plan

Typical Floor Plan

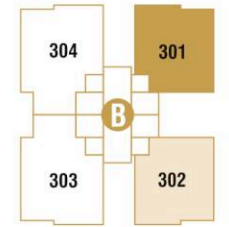


BLOCK - B



# 3 BHK Unit Plan

Typical Floor Plan

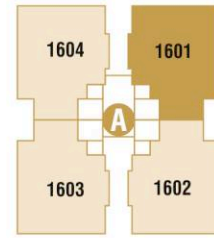


BLOCK - B



SKY  
Villa

16th Floor  
Penthouse Lower Level

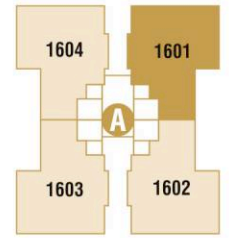


BLOCK - A

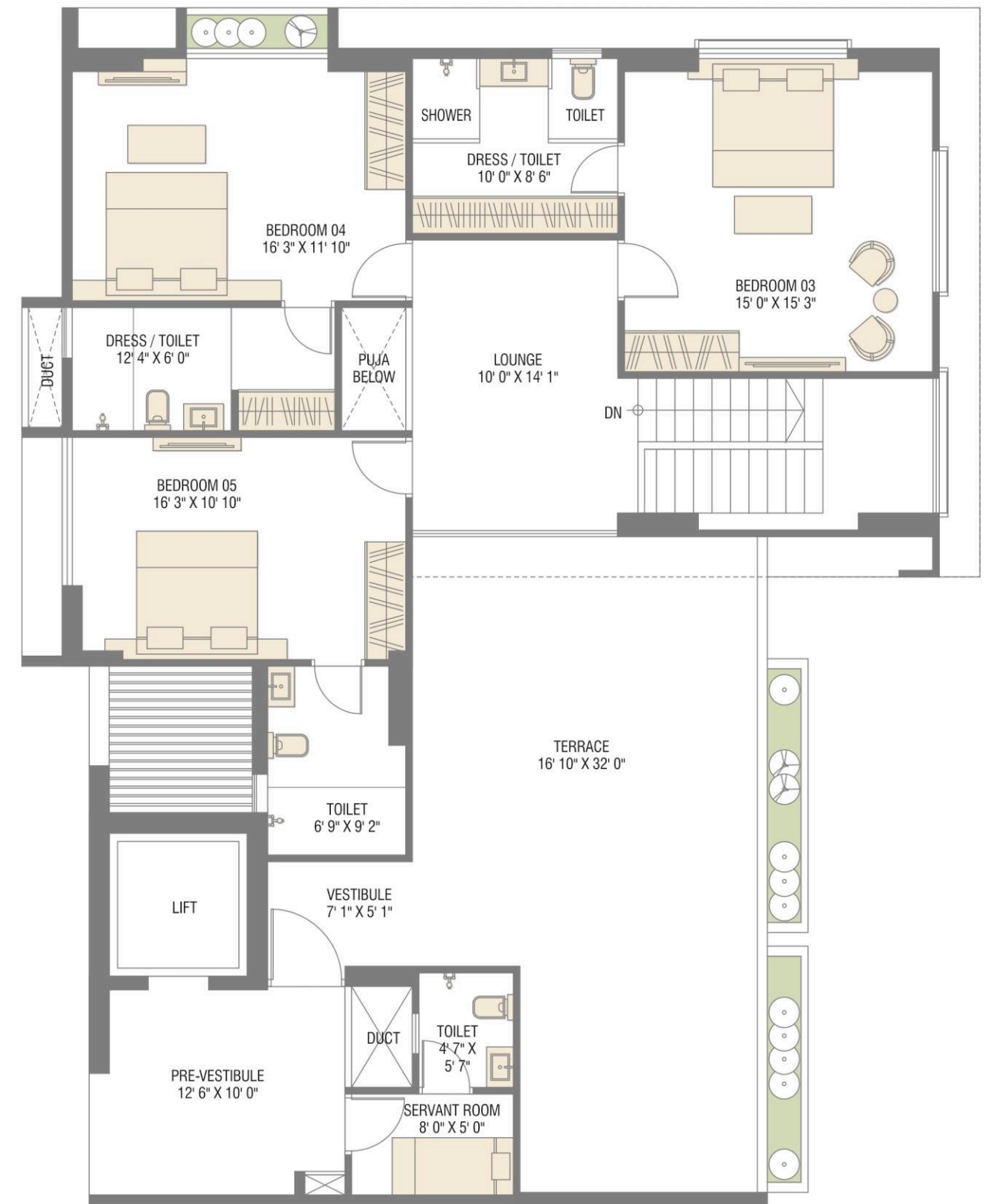


SKY  
Villa

17th Floor  
Penthouse Upper Level

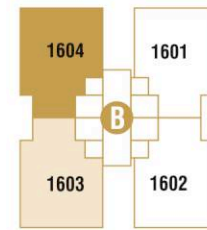


BLOCK - A



SKY  
Villa

16th Floor  
Penthouse Lower Level

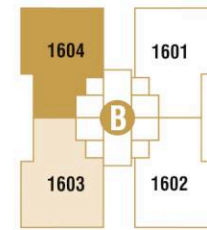


BLOCK - B



SKY  
Villa

17th Floor  
Penthouse Upper Level

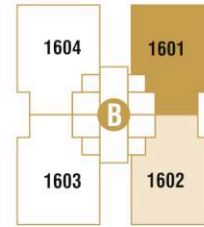


BLOCK - B

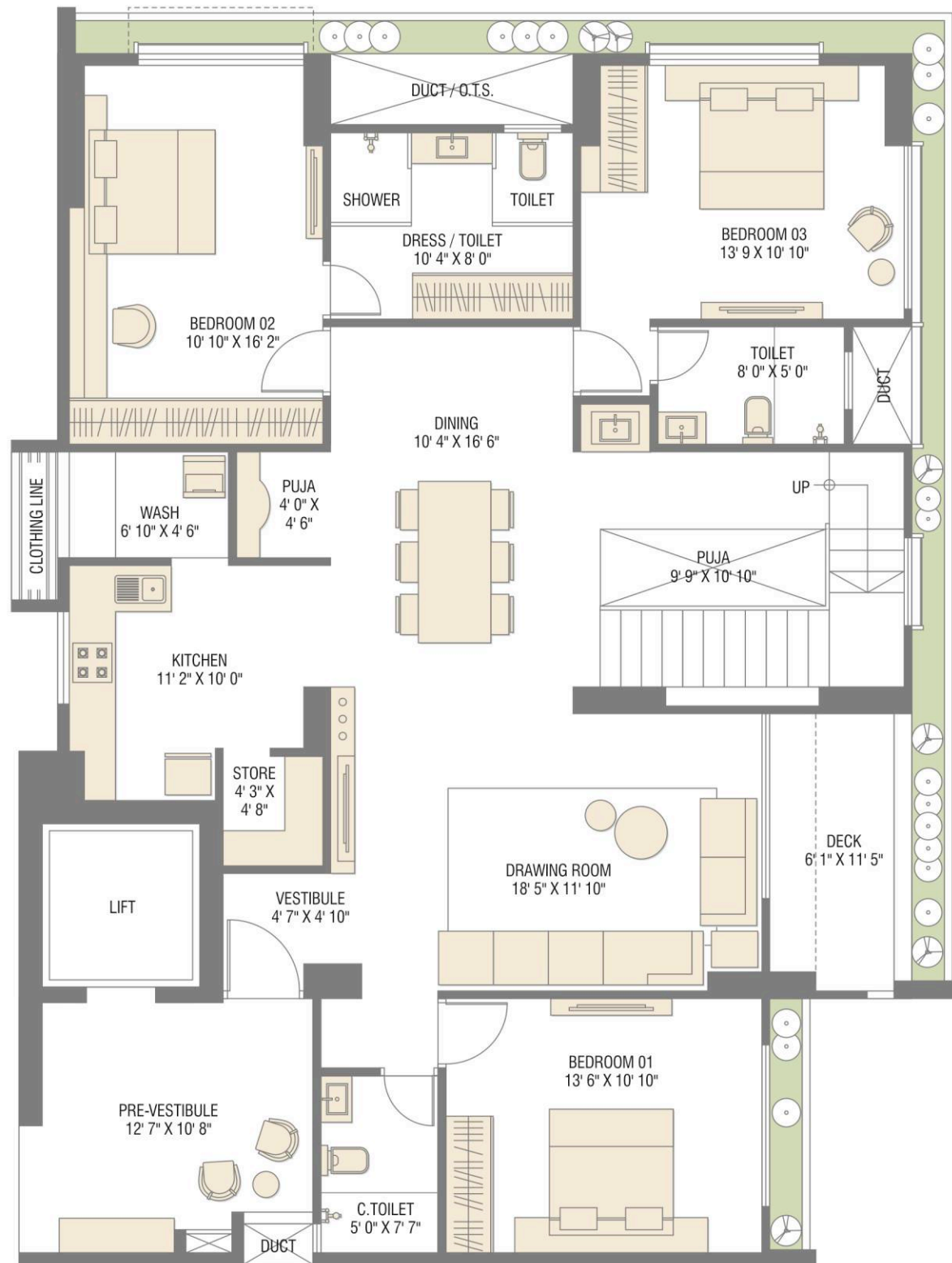


SKY  
Villa

16th Floor  
Penthouse Lower Level

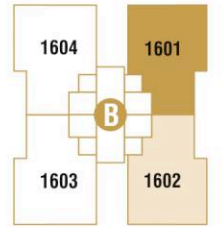


BLOCK - B



SKY  
Villa

17th Floor  
Penthouse Upper Level



BLOCK - B





MORE ELEGANCE  
FOR CLASSY  
STYLE



The spacious, lavish and majestic interior adds the nuance of glory and royal demeanour to your place. Every corner of your abode oozes exquisiteness and class. The warmth and charm you experience here is simply alluring.







## SPECIFICATIONS

### Flooring

- Italian marble / vitrified slab flooring in the drawing, living, dining, kitchen and all passages
- Vitrified tiles in all bedrooms & store areas
- Anti skid rustic tile flooring for deck

### Kitchen

- Platform-mirror polished granite with S.S. Sink
- Ceramic tile dado up to the lintel level on the walls above platform
- D.P. Kota stone shelves in the store room with glazed tiles dado up to lintel level

### Bathrooms

- Vitrified / ceramic / glazed tiles dado up to the lintel level
- Granite / composite marble basin counters and wash basins
- Door frame polished stone or granite

### Doors & Windows

- Main entrance door - fire resistant door with handles
- Other bedrooms flush doors without fitting & fixtures
- Door frame teak or equivalent
- Windows sill & jams polished stone or granite
- Windows aluminum sections

### Plumbing Work

- C.P.V.C. / U.P.V.C. Water supply pipes & PVC pipes for soil, waste & drainage systems
- Plumbing fittings Jaquar or equivalent
- Sanitary ware Duravit or equivalent

### Wash Area

- Anti-skid flooring with dado of ceramic / glazed tiles up to sill level
- Provision for washing machine with electric and plumbing point

### Electrical

- 3 phase concealed copper wiring with adequate numbers of points in all rooms
- Branded modular switches
- Provision for DTH and internet points
- Provision for ELCB, MCB distribution box

### External & Internal Finishes

- External double coat mala plaster with texture paint
- Internal single coat mala plaster with putty finish

### Air Conditioner

- Split AC in drawing room and all bedrooms

## SALIENT FEATURES

- Well landscaped garden with well designed seat out area
- Main gate with security cabin & automated boom barrier
- Secured foyer entry with access card
- Bore well for 24 hours water supply with softener plant
- Allotted mechanical stack car parking in basement

- DTH connection to each flat
- Intercom facility and video door phone
- CCTV camera surveillance for all common area
- Adani PNG gas connection in kitchen
- Generator for lift / water supply & common lightings
- Solar panel at roof-top generates clean energy for common utility energy consumption



Site : **Sharanya Skyvue**, Opp. Times Square, Nr. Baghban Party Plot, Thaltej, Ahmedabad - 380 059  
Contact : 063 5636 3232, 079 4800 0044

Notes : Plans, Specifications and Amenities are subject to change without prior notice. • This brochure is just for an easy presentation and should not be treated as a legal document. • The entire dimension given is approximate & unfinished. • The details, facts, specifications and amenities are mentioned are indicative for information purpose only and are subject to modification/compliance required as per RERA Act.

RERA NO. : PR/GJ/AHMEDABAD/AHMEDABAD CITY/AUDA/RAA07126/AIR/100321 • [www.gujrera.gujarat.gov.in](http://www.gujrera.gujarat.gov.in)

Architect  
PDC Architect  
Ahmedabad

Structural Consultant  
Silicon  
Ahmedabad

MEP Consultant  
Jhaveri Associates  
Ahmedabad



[www.sharanyaskyvue.com](http://www.sharanyaskyvue.com)