

sāanvi
nirman

*Curated with an essence
of Authenticity*



A peerless structure fashioned to captivate you with opulent comfort. With 14 units, these premium 4BHK homes will cater to your everyday leisure. Starting from its design to structure, every inch of it is crafted where staying at home feels like seasons of escape.

sāanvi
nirman

SKYDECK
SEASONS

4BHK Living Essentials

*A pure bliss that turns
Every falling leaf into flower*





*Pulsating with
the reminiscence*



*Swathe under the shimmering
midnight skies*





*Discover the dimension
of intimacy*

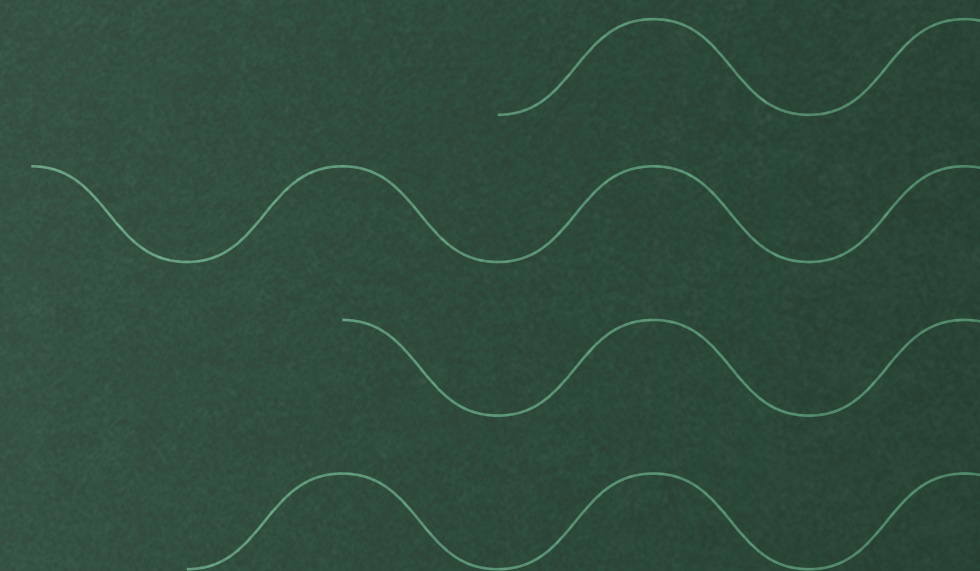


*A rawness in the aura
that tempts you*

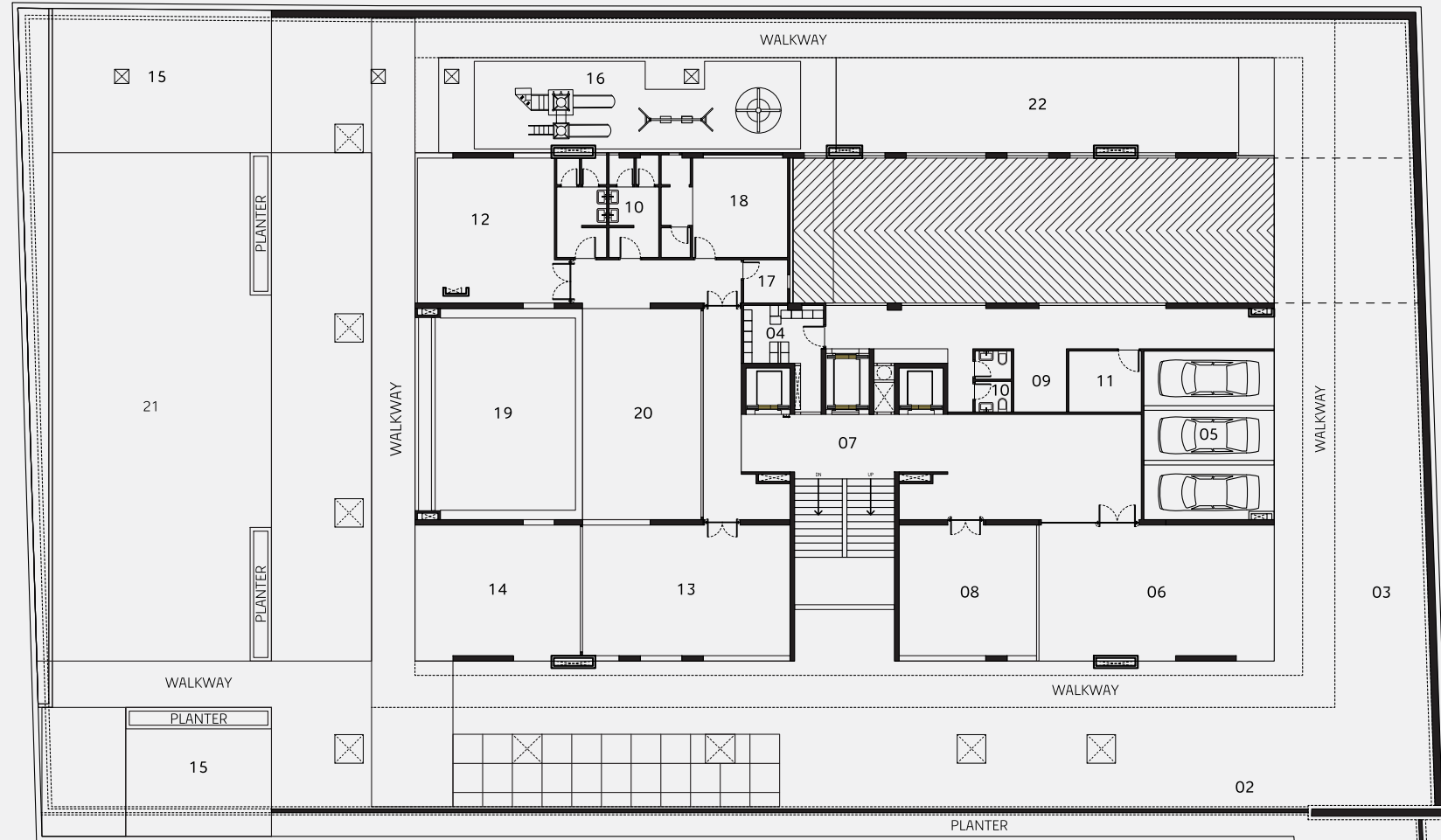




*Dive into the depths
of grandeur*



SKYDECK SEASONS | GROUND FLOOR PLAN

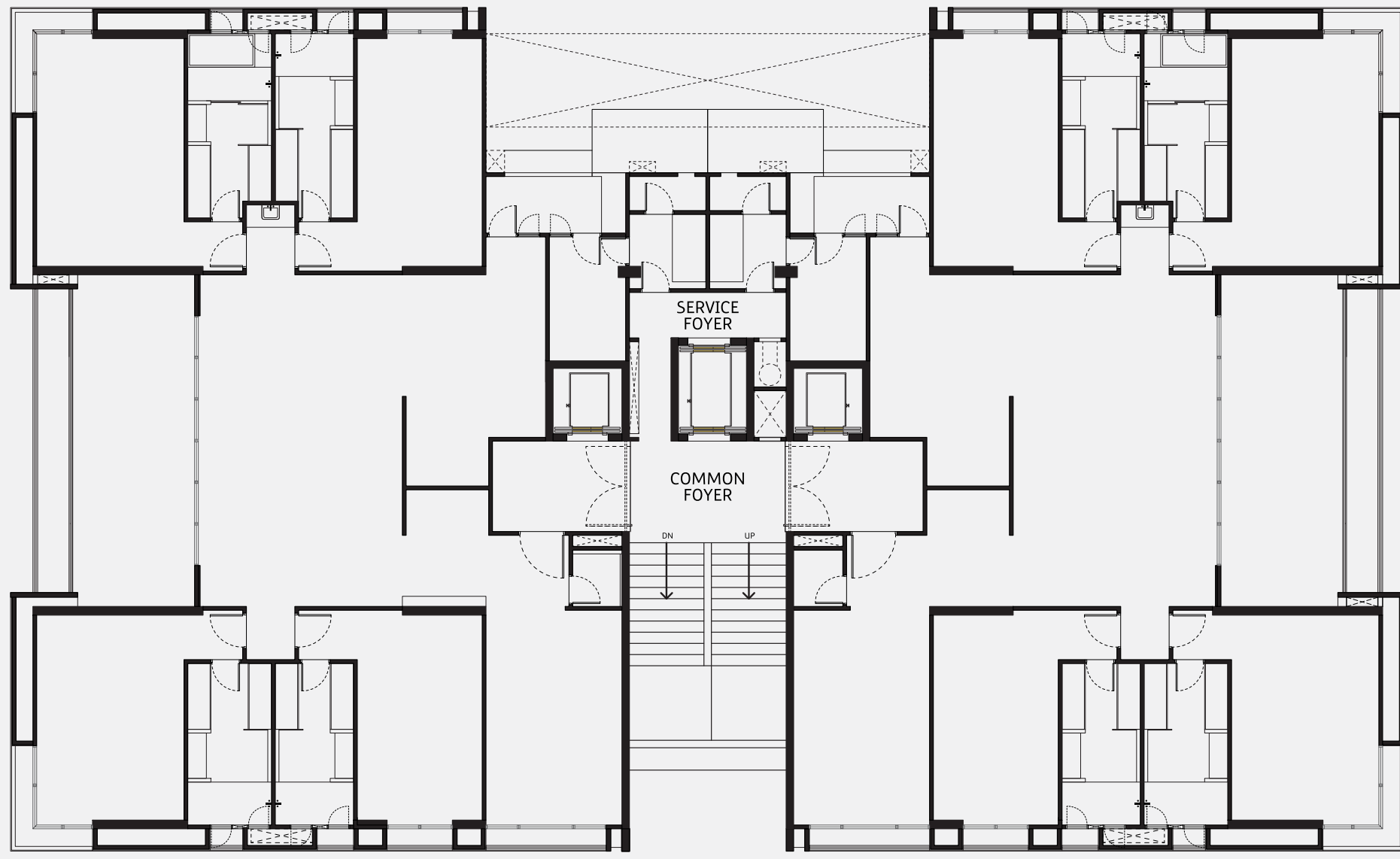


- 01. Entrance Gate
- 02. Security Cabin
- 03. Drop off Zone
- 04. Meter Room
- 05. Visitor's Parking
- 06. Entry Veranda
- 07. Lobby Foyer
- 08. Visitor's Lounge
- 09. Driver's Lounge
- 10. Staff Toilet
- 11. Society Office
- 12. Gymnasium
- 13. Multipurpose Hall
- 14. Veranda
- 15. Sitting Area
- 16. Children Play Area
- 17. Pantry
- 18. Spa
- 19. Swimming Pool
- 20. Deck
- 21. Garden
- 22. Private Garden

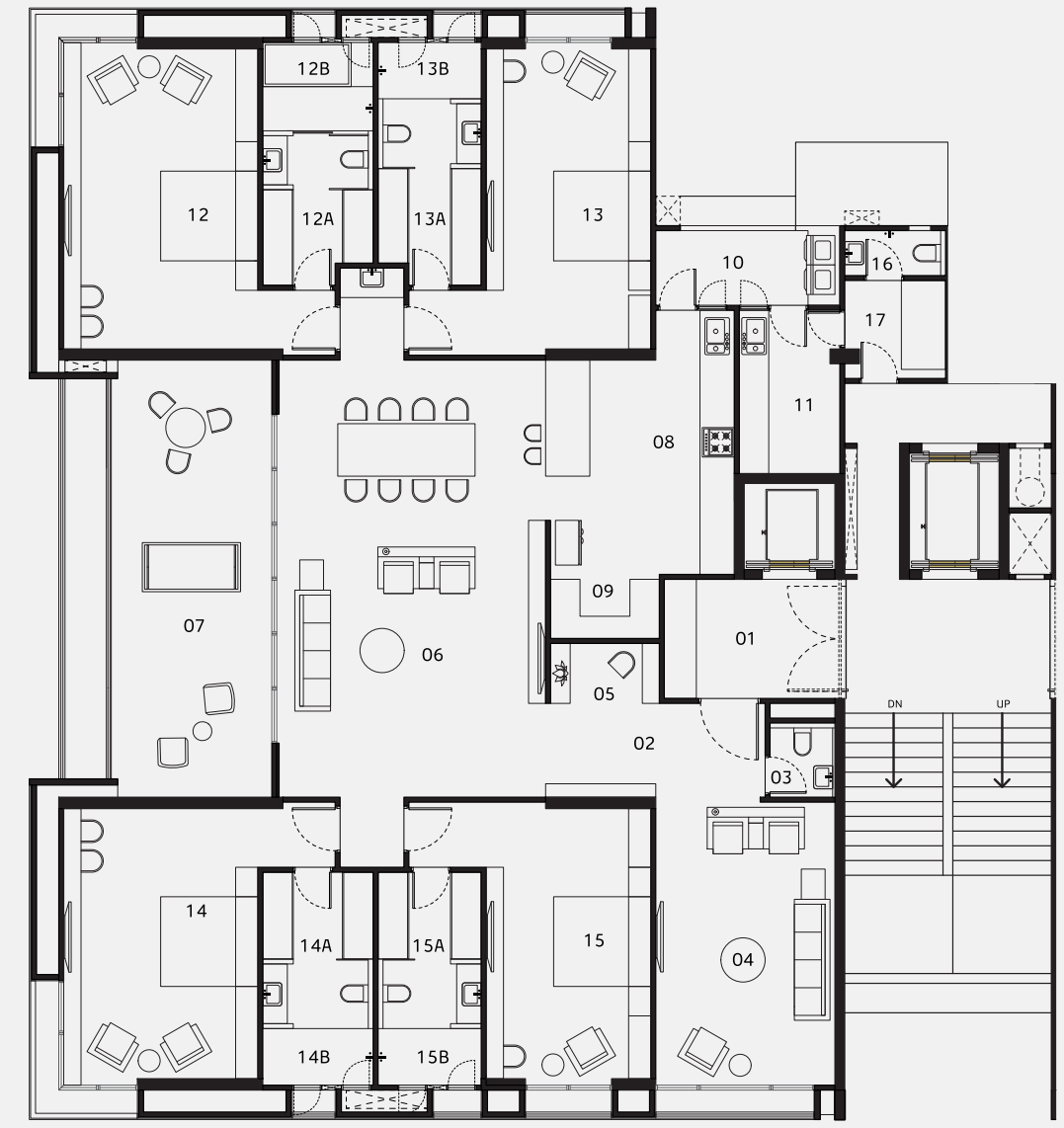


Actual Images

SKYDECK SEASONS | TYPICAL FLOOR PLAN



SKYDECK SEASONS | TYPICAL UNIT PLAN



01	Private Foyer	12'3" x 8'0"
02	Vestibule	14'9" x 6'3"
03	Powder Toilet	4'3" x 5'0"
04	Formal Room	12'0" x 19'0"
05	Puja Room	7'3" x 4'0"
06	Great Room	18'0" x 29'3"
07	Balcony	10'9" x 29'3"
08	Kitchen	12'3" x 14'3"/17'9"
09	Store	7'3" x 4'0"
10	Utility / Wash	12'3" x 5'0"
11	Wet Kitchen	6'9" x 11'3"
12	Master Bedroom 01	13'0" x 20'0"
12A	Closet	7'6" x 6'6"
12B	Toilet	7'6" x 9'6"
13	Children's Bedroom 02	11'0" X 20'6"
13A	Closet	7'0" x 8'0"
13B	Toilet	7'0" X 8'3"
14	Master Bedroom 03	13'0" x 18'0"
14A	Closet	7'6" x 6'0"
14B	Toilet	7'6" x 8'3"
15	Guest Bedroom 04	11'0" x 19'0"
15A	Closet	7'0" x 6'0"
15B	Toilet	7'0" x 8'3"
16	Servant Room	6'9" x 6'6"
17	Servant Toilet	6'9" x 3'0"



SALIENT FEATURES

- Well-designed Air-conditioned entrance foyer
- Common area under CCTV surveillance
- Fire hydrant system in each block
- Earth quake resistant structure
- Cable provision for DTH & Broadband connection
- Well planted complex with landscape garden
- 1 level of basement parking
- 4 car parking with help of mechanical parking system
- Garbage chutes
- 2 Automatic Elevator & 1 Stretcher Size Service Elevator
- Vehicle free garden & children play area
- Allocated society office space
- Semi-Home Automation
- Water Pressure system with softener / RO
- Water Meter in each apartment
- Power backup for common utilities

COMMON AMENITIES

- Multi-Purpose Hall
- Well Landscaped garden
- Sitting area
- Covered veranda
- Visitor's waiting lounge
- Kid's play area
- Driver's waiting lounge
- Gymnasium
- Walk way
- Private Garden with Sitting
- Visitor's Parking
- Common Toilet for Staff
- Covered Swimming Pool with Deck
- Spa Room
- Pantry Room
- Separate Storage Space for Each Apartment in Basement

SPECIFICATIONS

Flooring:

- Italian marble in Formal Drawing room, Great room, Dining area, Kitchen, Store Room, All Bedroom with Closets, and Pooja Room.
- Vitrified flooring in Wet Kitchen, Servant room & Servant Bathroom
- Lapato finish in Balcony

Kitchen & Wash Area:

- Polished granite platform with S.S sink in wet Kitchen
- Dado up to lintel level on wall above wet kitchen platform
- Ceramic / Vitrified tiles in wash area with ceramic tile dado
- Plumbing provision for R.O. plant, Central Water Heater/geyser & washing machine

Doors:

- Main door Frame & shutter in Veneer finish
- All internal door frame is in WPC doors with standard quality lock
- All internal doors are both side laminated

Windows:

- Akzonobel coated heavy aluminum sliding windows with DGLU.

Bathrooms:

- Italian Marble flooring in all bathroom & powder toilet and dado in four bathrooms
- Italian Marble Counter basin / Wall hung basin
- 1 bathroom with bathtub of branded make
- Hans Grohe or equivalent CP fittings
- Duravit or equivalent Sanitary ware
- Servant bathroom with Jaquar Make CP & Sanitary fittings
- Mechanical Exhaust Fan in Powered Toilet
- Supreme / Astral or equivalent corrosion free & leak proof CPVC / UPVC pipe fitting

Air Condition:

- Mitsubishi Heavy / equivalent Ductable HVAC with cooling & heating system even in dressing area

Electrification:

- 3 phase concealed ISI copper wiring with modular switches
- MCB distribution panel
- Home Automation for Light, Fan and dimmer
- Provision for T.V. cable/telephone/internet points/ Plug point for curtain motor in each room

Internal & External Wall Finish:

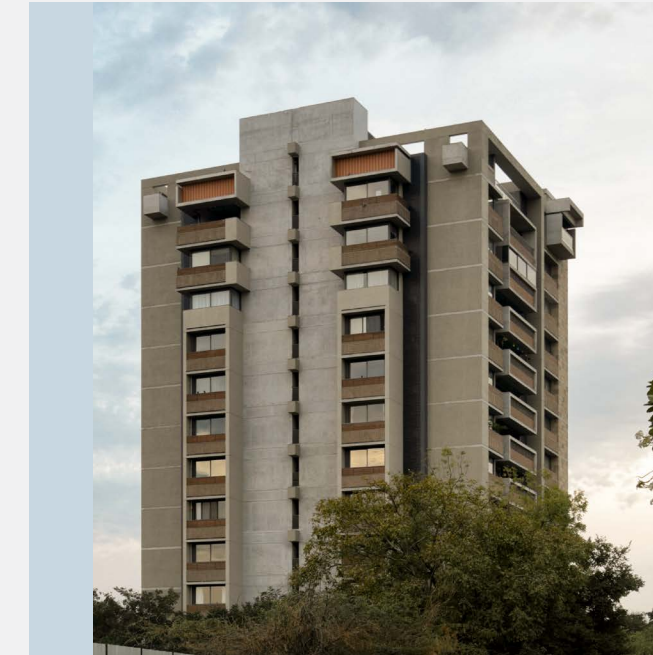
- All internal wall with Double coat putty finish & Expose RCC Ceiling
- External wall with double coated Mala plaster with texture & acrylic paint with water repellent coating

Security System:

- Multi-level security system / video door phone

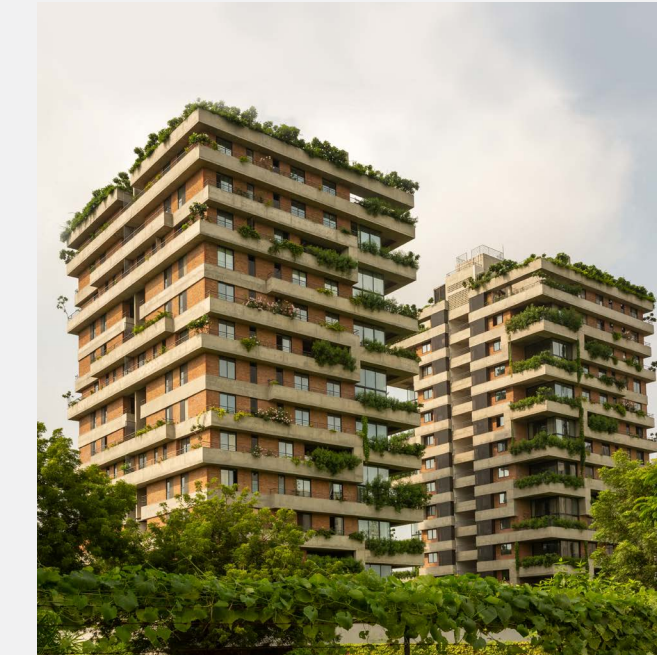
DISCLAIMER:

Artistic impressions are indicative only, which might not reflect the exact finishing of the building and the interiors. All distances mentioned are crow fly distances. Plans / Facilities / Images / Layouts / Specifications and other details contained herein are only indicative and subject to change without prior notice as may be required by the concerned authorities / developers / owners or as required due to site requirements. This printed material does not constitute an offer and / or contract of any type between the developer / owner and the recipient. For further information regarding the project the member / customer is requested to check the details on RERA website or at the Developer's office before going ahead with the booking.



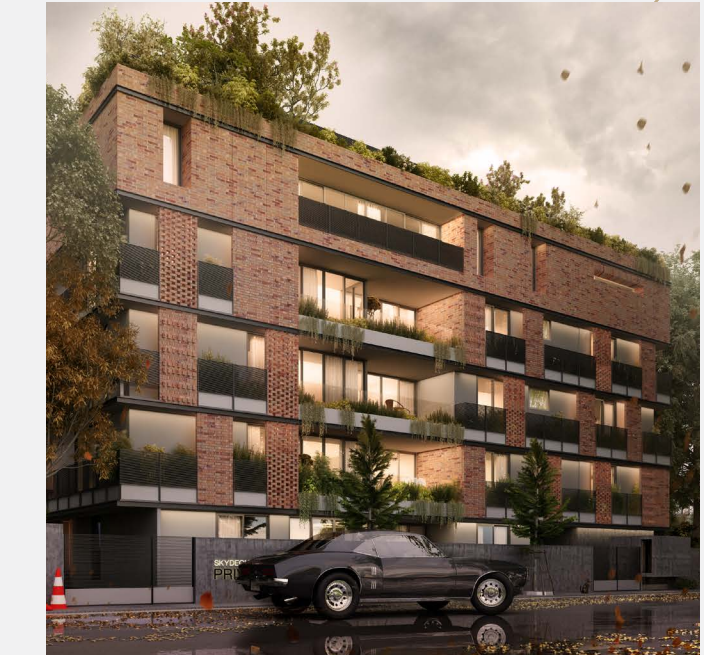
SKYDECK

4 BHK HOMES AT ISCON AMBLI



SKYDECK SELECT

4 BHK HOMES AT ISCON AMBLI



SKYDECK PRIVE

4 BHK HOMES AT UNIQUE PARK, SATELLITE

SKYDECK SEASONS

4BHK Living Essentials



SCAN OR CLICK
FOR LOCATION

+91 70696 54545 ZYDUS HOSPITAL RD., THALTEJ

PR/GJ/AHMEDABAD/AHMEDABAD CITY/AUDA/RAA07130/120620 • WWW.GUJRERA.GUJARAT.GOV.IN