



SKYDECK
SERENE



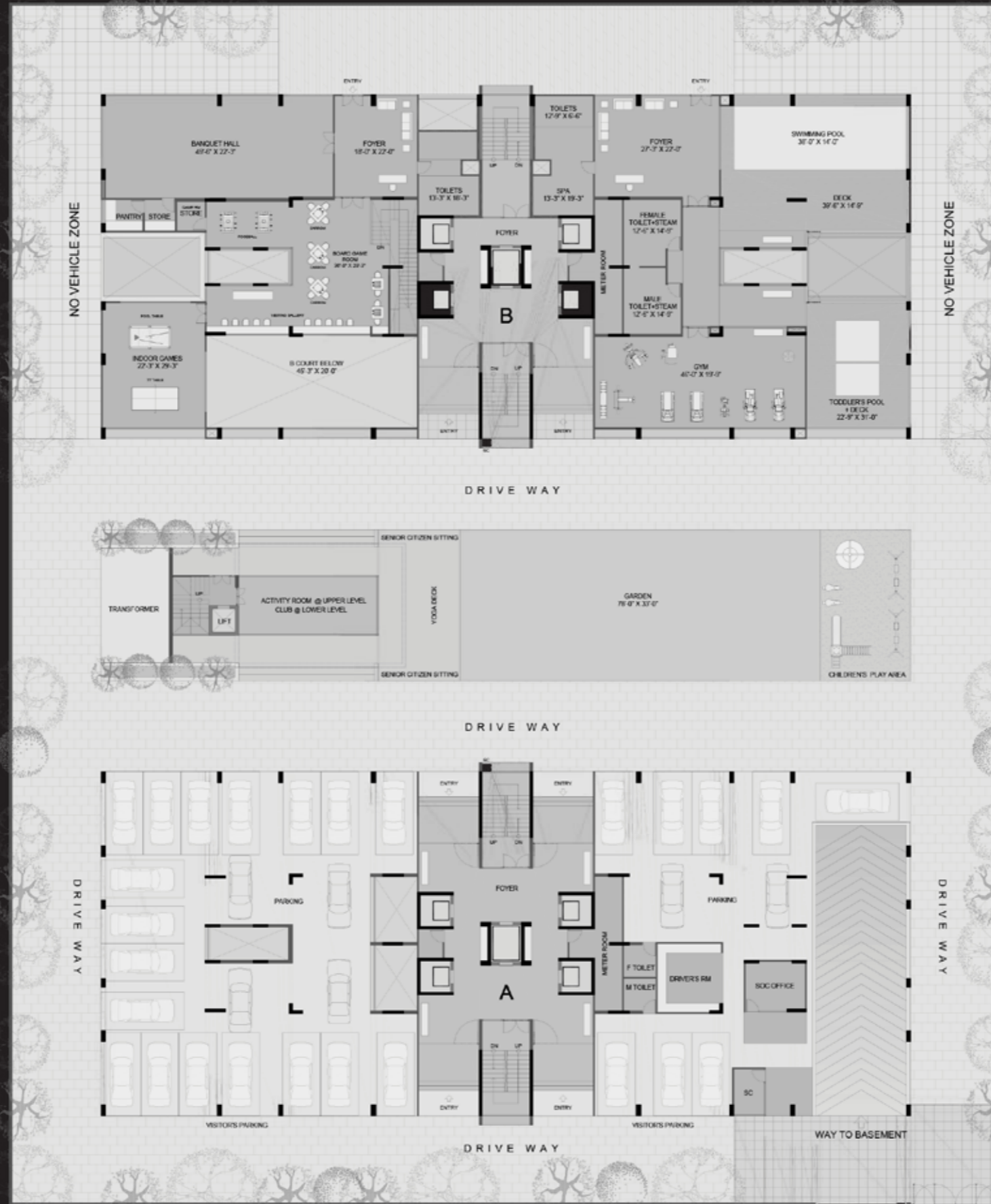
SKYDECK
SERENE



SKYDECK
SERENE



SKYDECK
SERENE



SKYDECK
SERENE
 Ground Floor Plan



18 MT WIDE ROAD



SKYDECK
SERENE

SKYDECK
SERENE



SKYDECK
SERENE



SKYDECK
SERENE



SKYDECK
SERENE



SKYDECK
SERENE



SKYDECK
SERENE

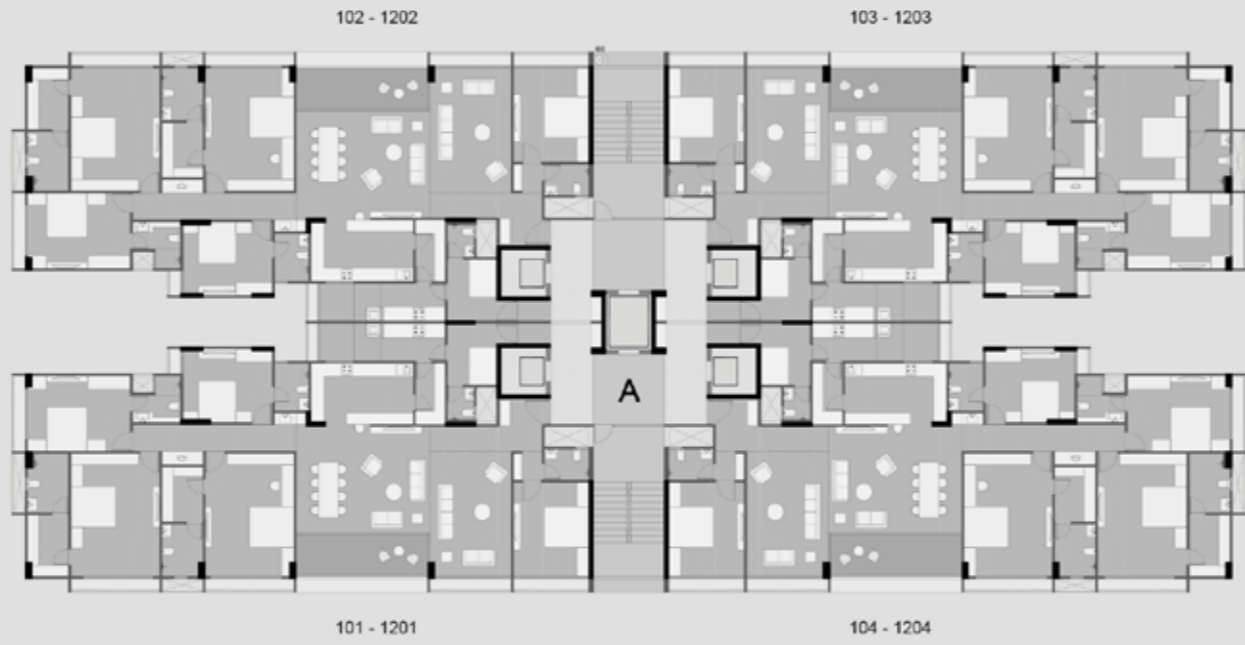
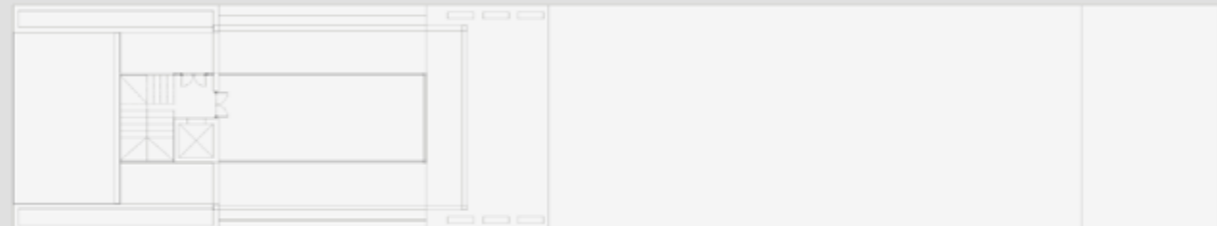
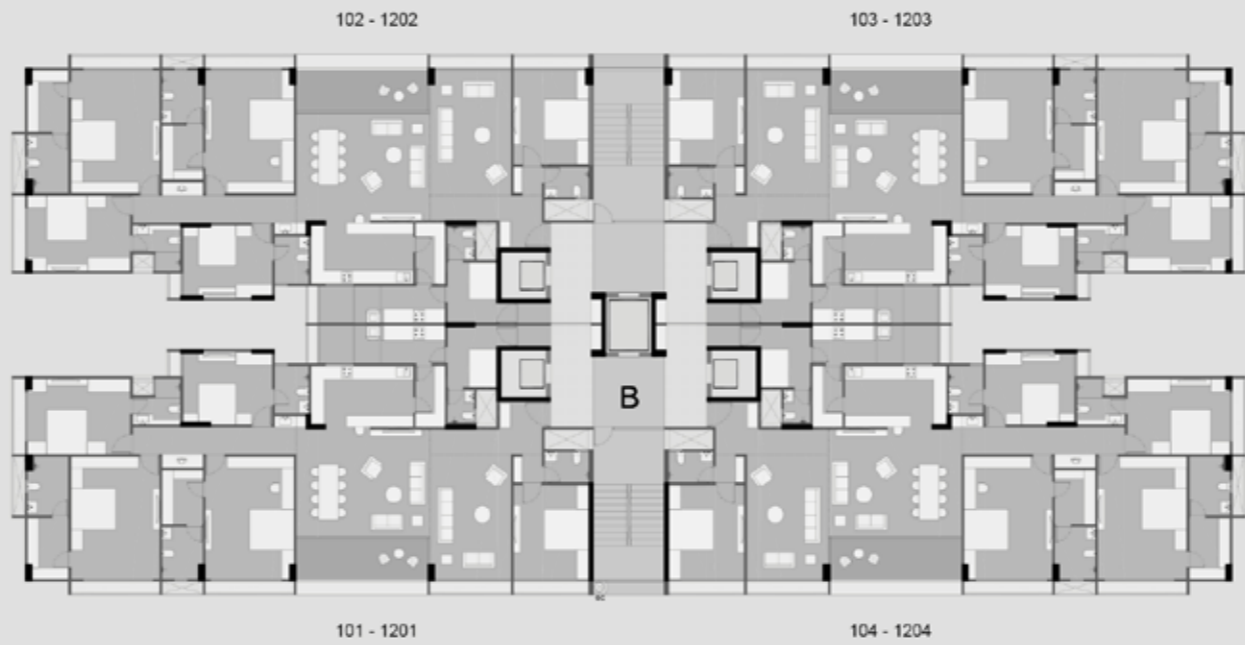


OOX

SKYDECK
SERENE



SKYDECK
SERENE

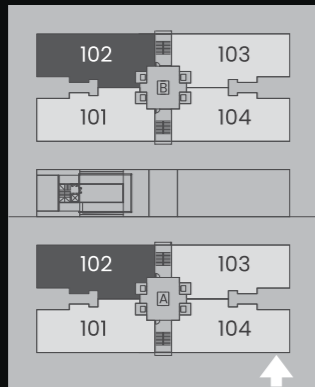


SKYDECK
SERENE

Typical Floor Plan
 1st to 12th Floor



18 MT WIDE ROAD



SKYDECK
SERENE
 Typical Unit Plan



SKYDECK
SERENE



SKYDECK
SERENE



SKYDECK
SERENE



SKYDECK
SERENE



SKYDECK
SERENE



SKYDECK
SERENE

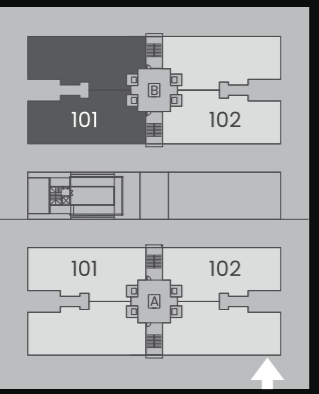


SKYDECK
SERENE

Penthouse Plan
13th Floor



18 MT WIDE ROAD



SKYDECK
SERENE
 Penthouse Unit Plan

Specifications

Flooring

- 1000 X 1000 mm Vitrified flooring in living and dining
- Master bedroom with Wooden Flooring
- 800 X 800 mm Vitrified flooring in other bedrooms
- Rustic tiles in Balcony and pre-vestibule area

Kitchen & Wash Area

- Polished granite platform with stainless steel sink
- Glazed tiles dado up to lintel level on wall above kitchen platform
- Kota / Vitrified tiles in wash area with Vitrified tiles dado
- Plumbing provision for R.O. plant & washing machine

Doors

- Main door Veneer finish with wooden frame and night latch lock
- All internal door Flush/WPC doors with standard quality lock

Windows

- Anodized coated heavy aluminum sliding windows with stone jambs

Bathrooms

- Ceramic tiles in floor and dado up to lintel level
- Counter basin / Wall hung basin
- Jaquar / Cera or equivalent Wall-hung EWC
- Jaquar or equivalent CP fittings
- Supreme / Astral or equivalent corrosion free & leak proof CPVC/ UPVC pipe fitting

Electrification

- 3 phase concealed ISI copper wiring with modular switches
- MCB distribution panel
- Provision for T.V./cable/telephone/internet points in each room

Internal & External Wall Finish

- All internal wall and ceiling with plaster and putty finish
- External wall with 100% acrylic paint finish

Security System

- Multi-level security system / video door phone

Salient Features

- Well-designed entrance foyer
- Common area under CCTV surveillance
- Fire hydrant system in each block
- Earth quake resistant structure
- Cable provision for DTH connection
- Cable provision for broadband connection
- Earmarked space for AC outdoor units
- Power backup for common utilities
- 2 level of basement parking
- 3 car parking with help of mechanical parking system
- Garbage chutes
- 5 Automatic Elevators in each Tower
- Allocated society office space
- Driver's room / waiting lounge
- Drop off zone
- Walk way

Common Amenities

- Banquet Hall with Pantry & Store
- Well Landscaped garden & Party Lawn
- Senior citizen sitting area
- Covered veranda
- Visitor's waiting lounge
- Swimming Pool or Toddler's Pool
- Library / Clubhouse
- Indoor double height sports court
- Table tennis & pool table
- Well equipped Gymnasium
- Yoga deck
- Indoor games room
- Children's / Kid's play area
- Multipurpose room / Kid's activity / toddler's room
- Spa / Massage room



DISCLAIMER

Artistic impressions are indicative only, which might not reflect the exact finishing of the building and the interiors. All distances mentioned are crow fly distances. Plans / Facilities / Images / Layouts / Specifications and other details contained herein are only indicative and subject to change without prior notice as may be required by the concerned authorities / developers / owners or as required due to site requirements. This printed material does not constitute an offer and / or contract of any type between the developer / owner and the recipient. For further information regarding the project the member / customer is requested to check the details on RERA website or at the Developer's office before going ahead with the booking.

sāanvi
nirman

saanvinirman.com

 96960 07000

Email: enquiry@saanvinirman.com

Reg. Office

"SAANVI NIRMAN HOUSE" Next to Skydeck, Kotak House Lane,
B/H Ashok Vatika, Iscon Ambli Road, Bodakdev, Ahmedabad- 380059

Site Address

Skydeck Serene, Wapa, Godhavi, Ahmedabad - 382115



LOCATION QR

