

Introducing  
**ARCHWAY**  
Luxurious 3 & 4 BHK Homes

Your Address of Progress

- Excellent Connectivity
- Essential Services Within Proximity
- One of The Fastest Developing Business Hubs
- One of The Fastest Growth Corridors of Ahmedabad & Gandhinagar



## For Excellent Connectivity, Shift To North-West Ahmedabad

Ahmedabad & Gandhinagar are becoming the symbol of grandiose. The families looking for a luxurious abode will be happy to explore Archway by Adani Realty. Your dream home resides at a location that offers high connectivity and proximity while still being tranquil.



## Exquisite Lifestyle awaits you @Jagatpur, North-West Ahmedabad

Luxury doesn't just come from a home but also from its location. Archway is constructed with the prime focus on not just your present needs but also future growth of the city. At Archway, all the essentials are in proximity.

### Healthcare

K D Hospital - 3.6kms | SGVP Holistic Hospital - 3.6kms | Sola Civil Hospital - 4.9kms | HCG Cancer Hospital - 6.6kms  
CIMS Hospital - 7.3kms | Zydus Hospital - 7.8kms

### Education

Shanti Juniors Jagatpur - 0.2kms | Global Indian International School - 1.2kms | Nirma University - 2.9kms | SGVP International School - 3.3kms  
Hiramani School - 3.6kms | GEMS Genesis International School - 4.9kms | Adani International School - 8.5kms

### Temples

Naminathay Jain Temple - 1km | Vaishno Devi Temple - 4.1kms Umiya Dham Temple - 4.6kms

### Important Infrastructure

Sabarmati Railway Station - 8.1kms | International Airport - 18.9kms

# We Found The Heartbeat of The City

Our luxury homes are for the legends who have understood the pulse of the city and established their benchmark of success in Ahmedabad. More than a home, this project resembles the spirit of our ever-growing city.





Artistic Impression

## An Opulent Lifestyle Awaits You Here

Archway is a lavish 3 & 4 BHK project that will satisfy your search for grandeur with community living. Experience the home that gives you freedom of space, comfort, and growth.



4 BHK -  
2 Apartments on  
Each Floor



Retail-Free Residential  
Development



Minimal Space  
Wastage



Homes with Expansive  
Green View\*



Exquisite Clubhouse  
with Swimming Pool &  
other Amenities



Spacious Homes  
with Balcony

\*For select apartments

# A Life of Elite Delights Awaits You



Mini Theatre



Swimming Pool with Deck



Indoor Games



Pet Park



Celebrations Lawn



Gymnasium



Business Meeting Room



Box Cricket



Jogging Track



Multi-Purpose Court



Children's Play Area



Reflexology Pathway



Yoga Deck



Aromatic Planting



Rooftop Barbeque Deck



Senior Citizen Sit-Out



Viewing Deck



Kids' Pool

## The Luxury of Quality

Your home should be more than a symbol of grandiose, it should be an emblem of strength and high functionality.







# The Luxury of Celebration

You deserve the most beautiful place to celebrate your priceless memories.

Artistic Impression



Artistic Impression

The Luxury of Bliss Lose yourself to the calmness of water and rejuvenate yourself every day.

Refreshing Swimming Pool

The Luxury of Acknowledgement  
The path to your exquisite hobbies deserves an elite welcome.



Artistic Impression

Grand Clubhouse Entrance

## The Luxury of Playfulness

Stay playful with your kids and relive your childhood with them.



Contemporary Indoor Games Room



State-of-the-art Gymnasium

## The Luxury of Healthy Living

Keeping your health in prime condition is the luxury that one should strive for.

## The Luxury of Togetherness

Your celebrations deserve the most beautiful venue to host your family and friends.



Artistic Impression

Magnificent Banquet



Artistic Impression

Elegantly Designed Foyer

## The Luxury of Stature

Every guest that comes to your home deserves the luxury of an elite welcome.

## The Luxury of Positivity

Having a living room that truly possesses lively and positive vibe is a luxury of its own.



Plush Living Room\*

Artistic Impression  
\*For typical 4BHK



## The Luxury of Delight

Dinner time is always special when the whole family has the luxury of eating together.

Artistic Impression  
\*For typical 4BHK

Lively Kitchen & Dining\*

## The Luxury of Relaxation

You spend a quarter of your life in the bedroom, we make sure that you have a beautiful one.



Spacious Master Bedroom\*

Artistic Impression  
\*For typical 4BHK





## The Luxury of Growth

A child needs its own space to grow and it's up to us to give them the luxury to grow infinitely.

Artistic Impression  
\*For typical 4BHK

Playful Kids' Room\*

## The Luxury of Sight

Your mornings and evenings deserve to have the luxury of the view of a lifetime.



Scenic Balcony\*

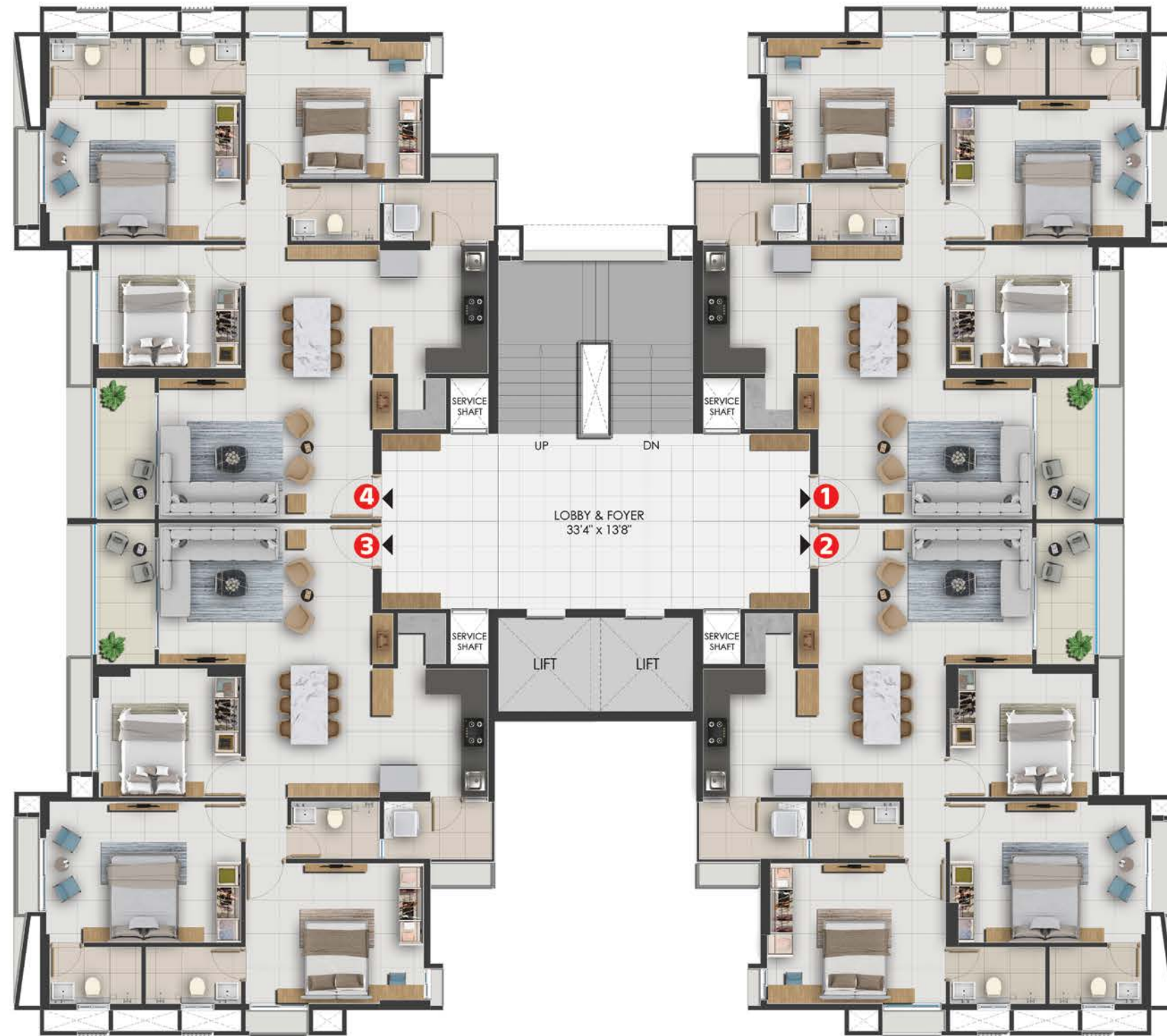
Artistic Impression  
\*For typical 4BHK



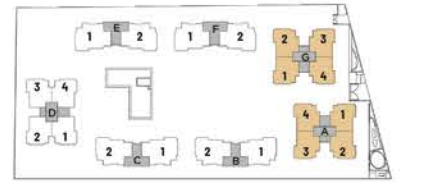
## Master Layout

### Legend

1. Entry
2. Exit
3. Gate with Security Cabin
4. Drop-Off
5. Entry to Basement
6. Exit from Basement
7. Feature Wall with Water Body
8. Senior Citizen Sit-Out
9. Aromatic Planting
10. Celebrations Lawn
11. Children's Play Area
12. Lawn Mound
13. Viewing Deck
14. Jogging Track
15. Seating Plaza
16. Yoga Deck
17. Swimming Pool
18. Kids' Pool
19. Rooftop Barbeque Deck
20. Multi-Purpose Court
21. Box Cricket
22. School Bus Drop-Off
23. Reflexology Pathway
24. Pet Park
25. Parking
26. Services

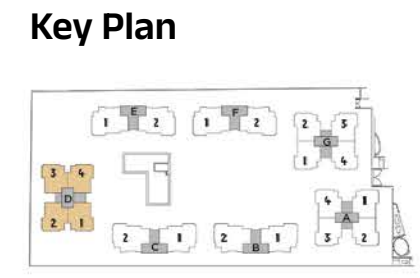
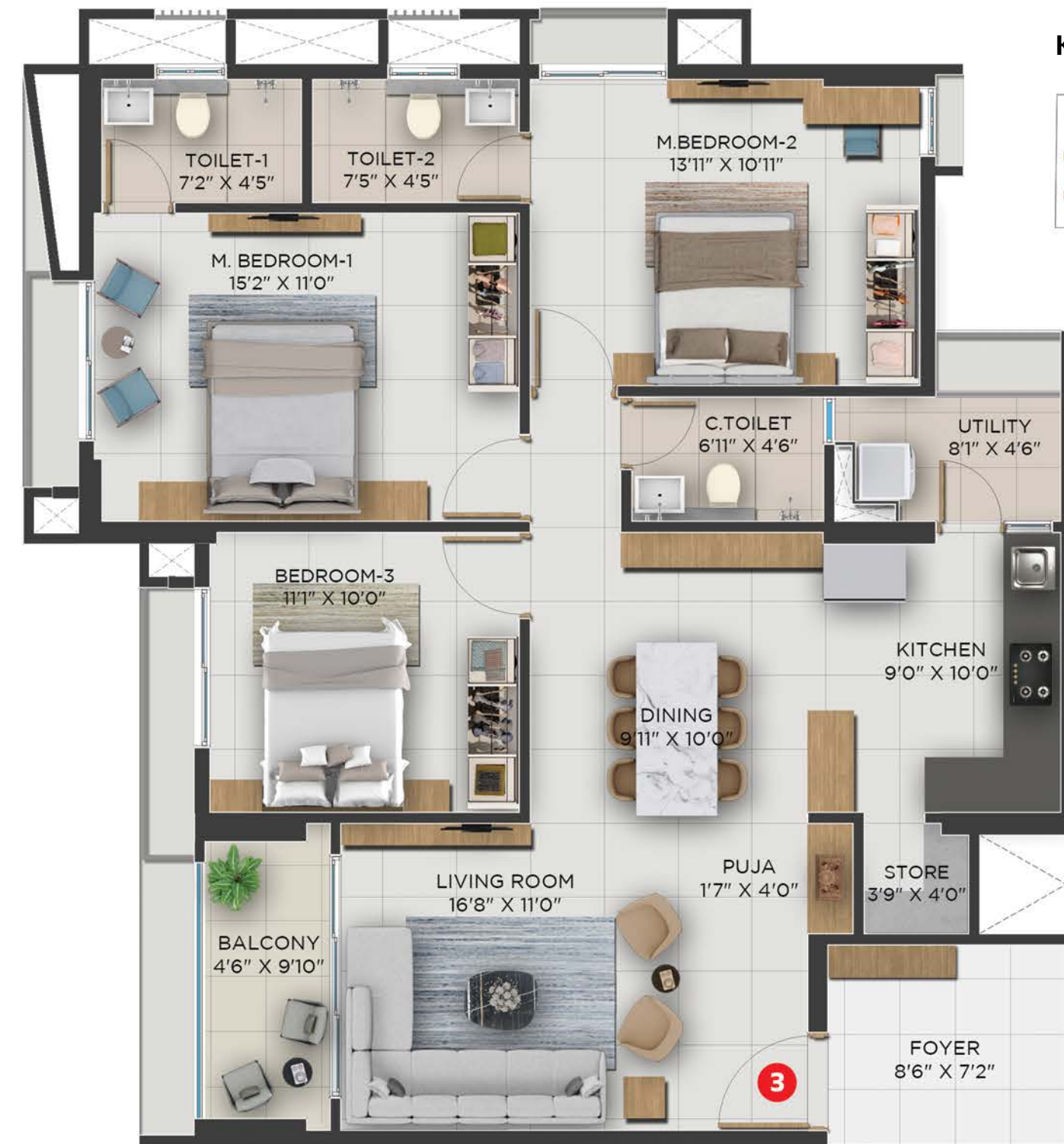
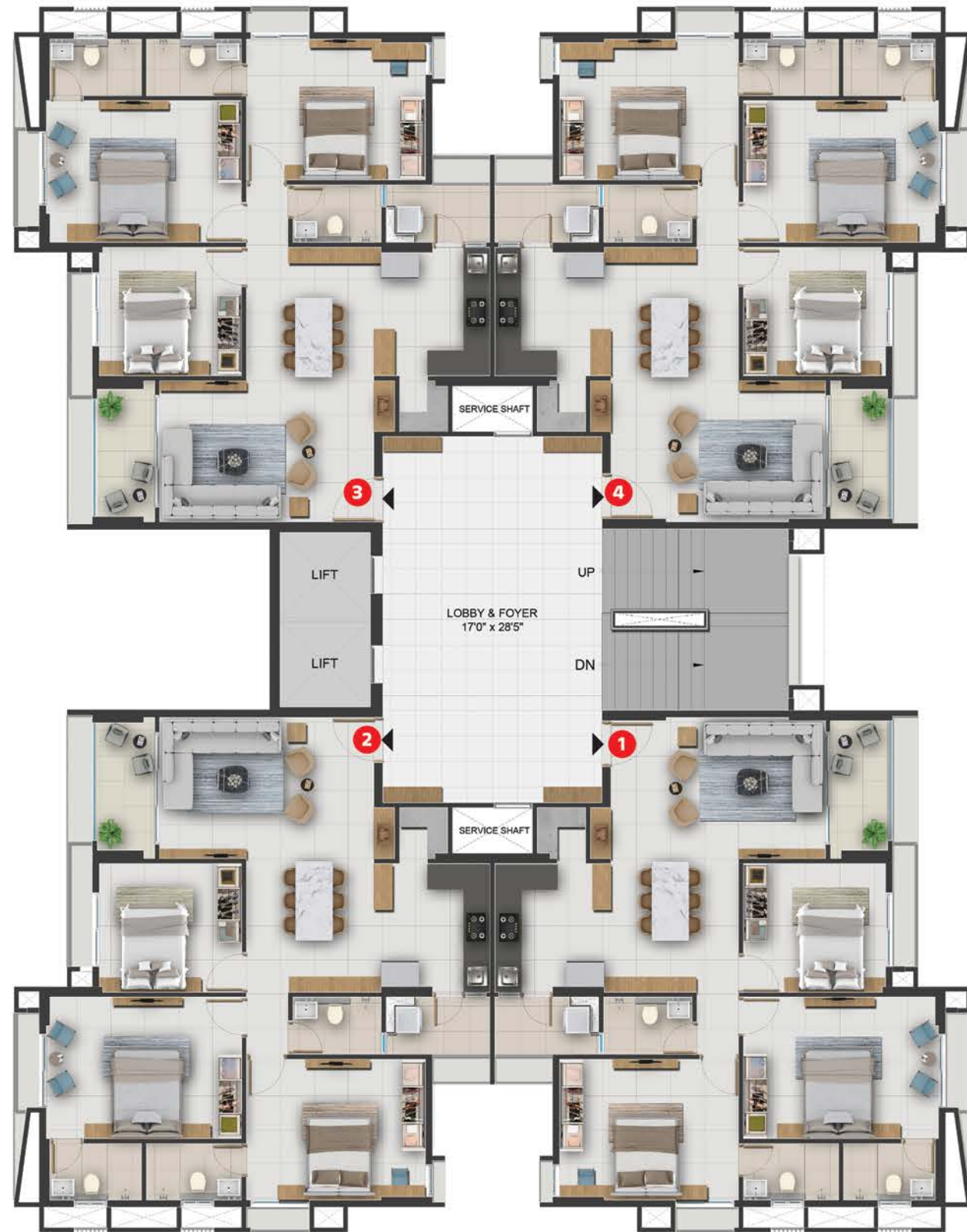


Key Plan



Floor no. 5, 8 & 11 will have refuge balcony at staircase mid landing level

Unit Plan	Indicative Saleable Area	RERA Carpet + EA (Exclusive Area)
3 BHK (Block A & G)	1936 Sq. Ft. 179.86 Sq. Mt.	1066.70 - 1070.26 Sq.Ft. 99.10 - 99.43 Sq. Mt.



Unit Plan	Indicative Saleable Area		RERA Carpet + EA (Exclusive Area)	
3 BHK (Block D)	1929 Sq. Ft.	179.21 Sq. Mt.	1063.80 - 1065.95 Sq. Ft.	98.83 - 99.03 Sq. Mt.

Floor no. 5, 8 & 11 will have refuge balcony at staircase mid landing level

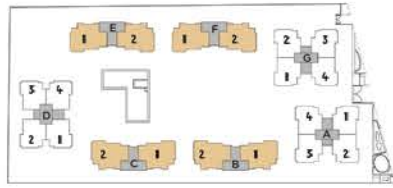
# 4 BHK Typical Floor Plan Block-B, C, E, F (1<sup>st</sup> to 14<sup>th</sup> floor)



Floor no. 5, 8 & 11 will have refuge balcony at floor level

# Unit Plan 4 BHK Type A

## Key Plan



Unit Plan	Indicative Saleable Area		RERA Carpet + EA (Exclusive Area)	
4 BHK	2512 Sq. Ft.	233.37 Sq. Mt.	1382.41 Sq. Ft.	128.43 Sq. Mt.

# Project Specifications

AREAS	FLOOR	WALLS	CEILING	DOORS	WINDOWS/GLAZING	OTHERS
LIVING/ DINING ROOM	POLISHED VITRIFIED TILES	INTERNAL WALLS PUTTY FINISHED/GYPSUM PLASTER	PUTTY FINISHED/ GYPSUM PLASTER	MAIN ENTRANCE DOOR: WOODEN/WPC FLUSH DOOR WITH LAMINATES ON BOTH SIDE	ALUMINIUM WINDOWS	800MMX800MM VITRIFIED TILES FLOORING
MASTER BEDROOM (s)	POLISHED VITRIFIED TILES	INTERNAL WALLS PUTTY FINISHED/GYPSUM PLASTER	PUTTY FINISHED/ GYPSUM PLASTER	WOODEN/WPC FLUSH DOOR WITH LAMINATES ON BOTH SIDES	ALUMINIUM WINDOWS	800MMX800MM VITRIFIED TILES FLOORING
OTHER BEDROOM (s)	POLISHED VITRIFIED TILES	INTERNAL WALLS PUTTY FINISHED/GYPSUM PLASTER	PUTTY FINISHED/ GYPSUM PLASTER	WOODEN/WPC FLUSH DOOR WITH LAMINATES ON BOTH SIDES	ALUMINIUM WINDOWS	800MMX800MM VITRIFIED TILES FLOORING
KITCHEN	POLISHED VITRIFIED TILES	INTERNAL WALLS PUTTY FINISHED/GYPSUM PLASTER	PUTTY FINISHED/ GYPSUM PLASTER	EXTERNAL DOOR: ALUMINIUM DOOR	ALUMINIUM WINDOWS	CERAMIC TILES DADO UPTO 600MM ABOVE GRANITE COUNTER TOP WITH STAINLESS STEEL SINK SINGLE BOWL
STORE	POLISHED VITRIFIED TILES	INTERNAL WALLS PUTTY FINISHED/GYPSUM PLASTER	PUTTY FINISHED/ GYPSUM PLASTER	-	-	KOTA STONE SHELVES
BALCONY	MATT FINISH VITRIFIED TILES	WEATHER PROOF PAINT	PUTTY/GYPSUM PLASTER AND PAINT FINISHED	EXTERNAL DOOR: ALUMINIUM DOOR	-	MS RAILING
MASTER BATHROOM (s)	MATT FINISH VITRIFIED TILES	CERAMIC TILES AND PUTTY FINISHED/GYPSUM PLASTER	GRID CEILING WITH GYPSUM TILES	WOODEN/WPC FLUSH DOOR WITH PAINT ON BOTH SIDES	ALUMINIUM WINDOWS	STANDARD MAKE PLUMBING AND SANITARY FITTINGS, DADO UPTO LINTEL HEIGHT ADEQUATE WATER PROOFING
OTHER BATHROOM (s)	MATT FINISH VITRIFIED TILES	CERAMIC TILES AND PUTTY FINISHED/GYPSUM PLASTER	GRID CEILING WITH GYPSUM TILES	WOODEN/WPC FLUSH DOOR WITH PAINT ON BOTH SIDES	ALUMINIUM WINDOWS	STANDARD MAKE PLUMBING AND SANITARY FITTINGS, DADO UPTO LINTEL HEIGHT ADEQUATE WATER PROOFING
UTILITY AREA	MATT FINISH VITRIFIED TILES	CERAMIC TILES AND PUTTY/ GYPSUM PLASTER WITH PAINT FINISH	PUTTY/GYPSUM PLASTER AND PAINT FINISHED	-	-	PARAPET WITH MS HANDRAIL, ADEQUATE WATER PROOFING
ELECTRICAL	MODULAR TYPE SWITCHES, 3 PHASE CONCEALED WIRING, DG BACKUP FOR COMMON AREAS, ADEQUATE LIGHT POINTS WITH AC POINTS IN ALL BEDROOMS AND GEYSER POINTS IN ALL BATHROOMS					
AMENITIES	CLUB FACILITY WITH MULTIPURPOSE HALL, MINI THEATRE, GYM, INDOOR GAMES, SWIMMING POOL WITH DECK. KIDS' POOL, BUSINESS MEETING ROOM, YOGA DECK, ROOF TOP BABEQUE DECK, OUTDOOR FACILITY WITH CELEBRATION LAWN, PET PARK, CHILDREN'S PLAY AREA, MULTIPURPOSE COURT, BOX CRICKET, SENIOR CITIZEN SIT-OUTS, AROMATIC PLANTING, JOGGING TRACK, REFLEXOLOGY PATHWAY, VIEWING DECK					
SECURITY	SECURED VEHICLE ENTRY THROUGH RFID SYSTEM, CCTV IN BASEMENT AND GROUND FLOOR LIFT LOBBIES					
OTHERS	PROVISION FOR FTTH, DISH TV NETWORK FROM EITHER OF TWO OPERATORS					



Spaces that make every moment special.

Come, find your  
**#AddressOfGoodness**

Artistic Impression

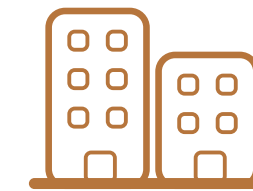
At **Adani Realty**, we believe in building spaces that live each moment with you and nurture your dreams. Your success, your memories, your happiness - your space is a part of it all. We thrive to build places that make you feel safe and provide an atmosphere for you to build your life moment by moment. We build an address that makes every day feel special and turns into your **#AddressOfGoodness**.

Adani Realty is the real-estate arm of Adani Group, one of India's leading infrastructure and development conglomerates. With its commitment to **'Nation Building'** and **'Growth with Goodness'**, Adani Realty has completed developing 15 Mn. sq. ft. and has 18+ Mn. Sq. ft. of real estate space under development which includes residential, commercial, retail and social club projects across Ahmedabad, Mumbai, Pune & Gurugram.

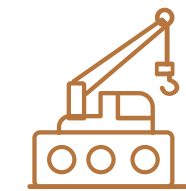
No matter what your choice of comfort is, there will always be something for you at Adani Realty. It is our commitment to give you the best possible lifestyle you can imagine. Because at Adani Realty, we don't just build timeless structures, we build the **#AddressOfGoodness**.



**12+**  
 Years Young



**15**  
 Mn. Sq. Ft.  
 Space Delivered



**18+**  
 Mn Sq. Ft.  
 Under Development



**40+**  
 Awards Won



**7000**  
 Happy Families

**Residential | Commercial | Retail | Social Club**





Scan to locate Luxurious lifestyle



**Call : 1800 108 0009**

---

PROJECT DEVELOPED BY ADANI INFRASTRUCTURE AND DEVELOPERS PVT. LTD. | [WWW.ADANIREALTY.COM](http://WWW.ADANIREALTY.COM) |     

---

TP 34, FP 19, Opp. Krishna Heights, Jagatpur, North-West Ahmedabad, Gujarat - 382470

PROJECT LISTED ON [WWW.GUJRERARI.GUJARAT.GOV.IN](http://WWW.GUJRERARI.GUJARAT.GOV.IN) | RERA NO.: PR/GJ/AHMEDABAD/AHMEDABAD CITY/AUDA/RAA10154/050522

Disclaimer: This is not an advertisement within the meaning of RERA. This is not an offer, an invitation to offer and/or commitment of any nature. The images include artistic impressions and for representation purpose only. This information is presented as indicative general information and no warranty is expressly or impliedly given that the completed development will comply in any degree with such artist's impression or represented images as depicted. All content relating to this project are provided solely for the purpose of information and reference. The communication is subject to change in case of revised plan and RERA project alteration. We reserve the right to provide certain insertions of detailed layout plan pertaining to the specific unit/building/wing to the recipient. The sale is subject to terms of application form and Agreement for sale. The recipient is deemed to have been notified and agreeable to the same.