

GREENVIEW

3 BHK + WFH Apartments



THE GREEN CORRIDOR OF SHANTIGRAM

Own the tranquility
and calmness for life

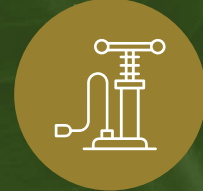


SHIVALIK[®]
BUILDING LANDMARKS SINCE 1998

ADESH

adani
Realty

GREEN BUILDING FEATURES



Highly Efficient Motors & High Pressure Pumps



Low Voc Content Paints, Adhesives



Solar Panel



Lighting Fixture With Minimum Energy Consumption



Percolation Wells For Rain Water Harvesting



Water Efficient Plumbing Fixtures For Conservation Of Water



Facilities For Electric Vehicles To Promote Eco-Friendly Environment



Provision Of Chute For Segregation Of Dry And Wet Waste Separately



Plenty Of Daylight & Enhanced Fresh Air Ventilation Provision To All Spaces.

THE GREEN ASPECT OF LIFE



With sustainability and green building certifications at hand, we bring you an eco-friendly life.

A life that comes with ample green spaces and one which enables you to live a peaceful and natural lifestyle.







OWN THE GREENS



With ample green spaces & modern amenities,
we welcome you with a vibe that recreates
one's experience of life and aligns it with
the harmony of nature.



TOWNSHIP FEATURES



Community of
3500+ Families



Enables Better Health
due to Clean & Fresh Air



Convenience of
Shoppers' Plaza



Lakeside
Promenade



Football Ground



Cricket Ground



The Belvedere
Golf & Country Club



Lord Shiva & Jain Temples
in the Township



Pre-school and
College Facility



Waste Management &
Water Treatment Facility



Internal
Bus Service



Intra-township
Cycling





AMENITIES



Mini Theatre



Yoga Room



Gym With Steam Area



Library



Gazebo



Kids Play Area
Indoor & Outdoor



Medicare Center



Indoor Game Zone



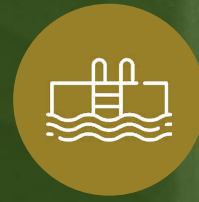
Table Tennis Area



Garden



Multipurpose Hall



Splash Pool



Box Cricket



Outdoor Chess



Senior Citizen
Sit-out



Grocery Store

14 Floors | 5 Towers | Top Floors with Penthouses | 2 Alloted Parkings per Apartment
Adequate Parking for Guests | Personal Foyer for Individual Apartments | Power Backup

HEAVEN AMIDST THE GREENS



Along with the smartly planned spacious homes and soothing green views, a kingdom of heaven is laid out for you, to play, recreate and live life to the fullest.

GROUND FLOOR

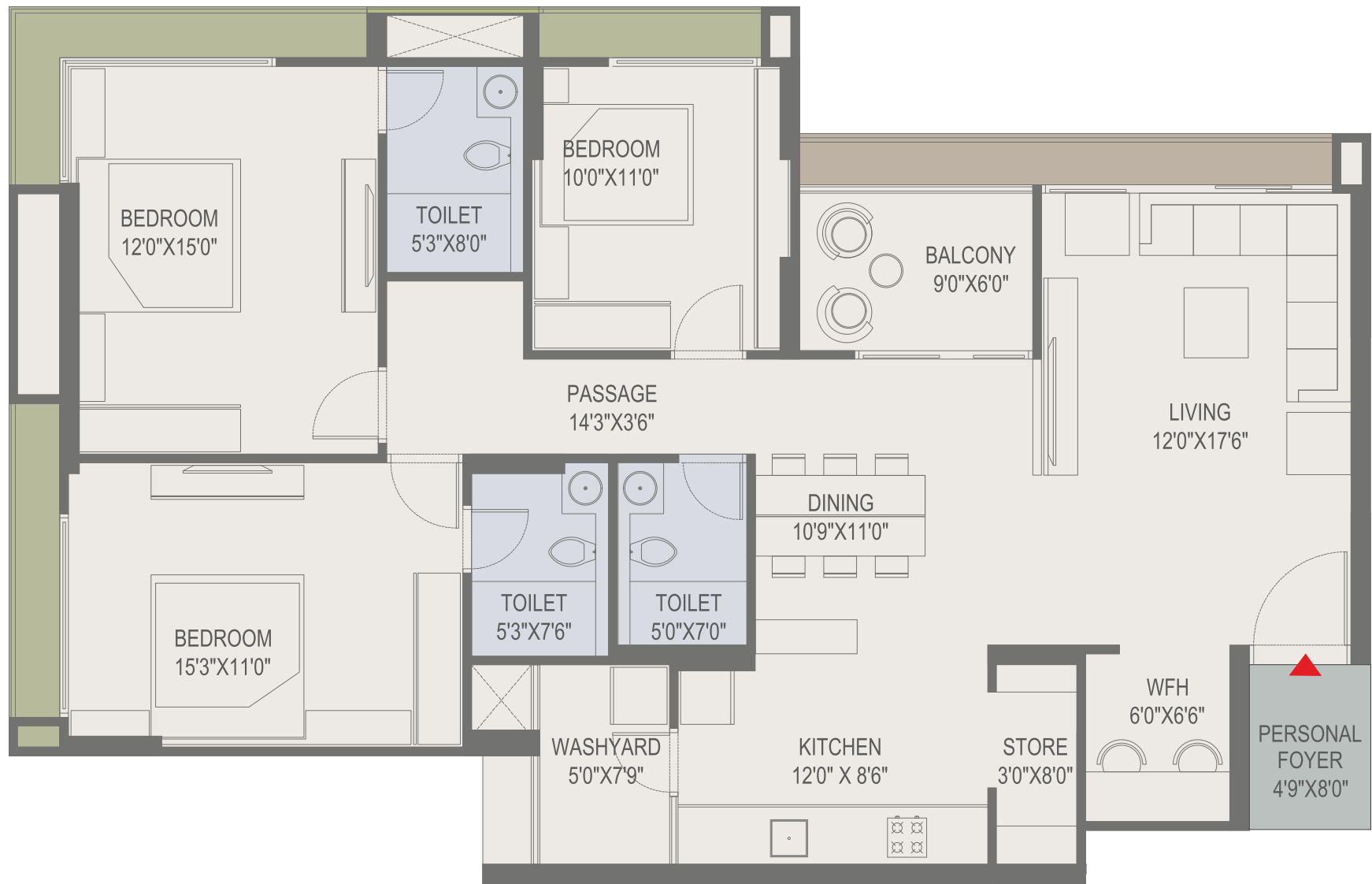
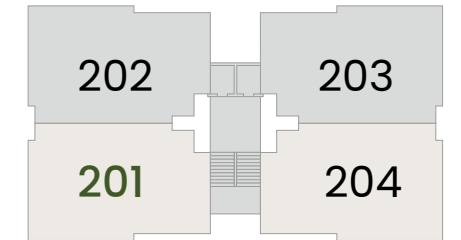
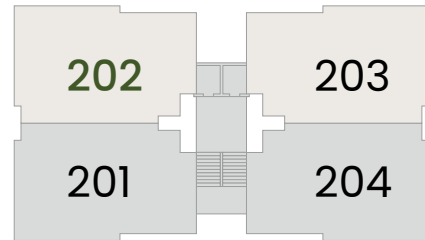


TYPICAL FLOOR PLAN





 TYPICAL FLOOR PLAN

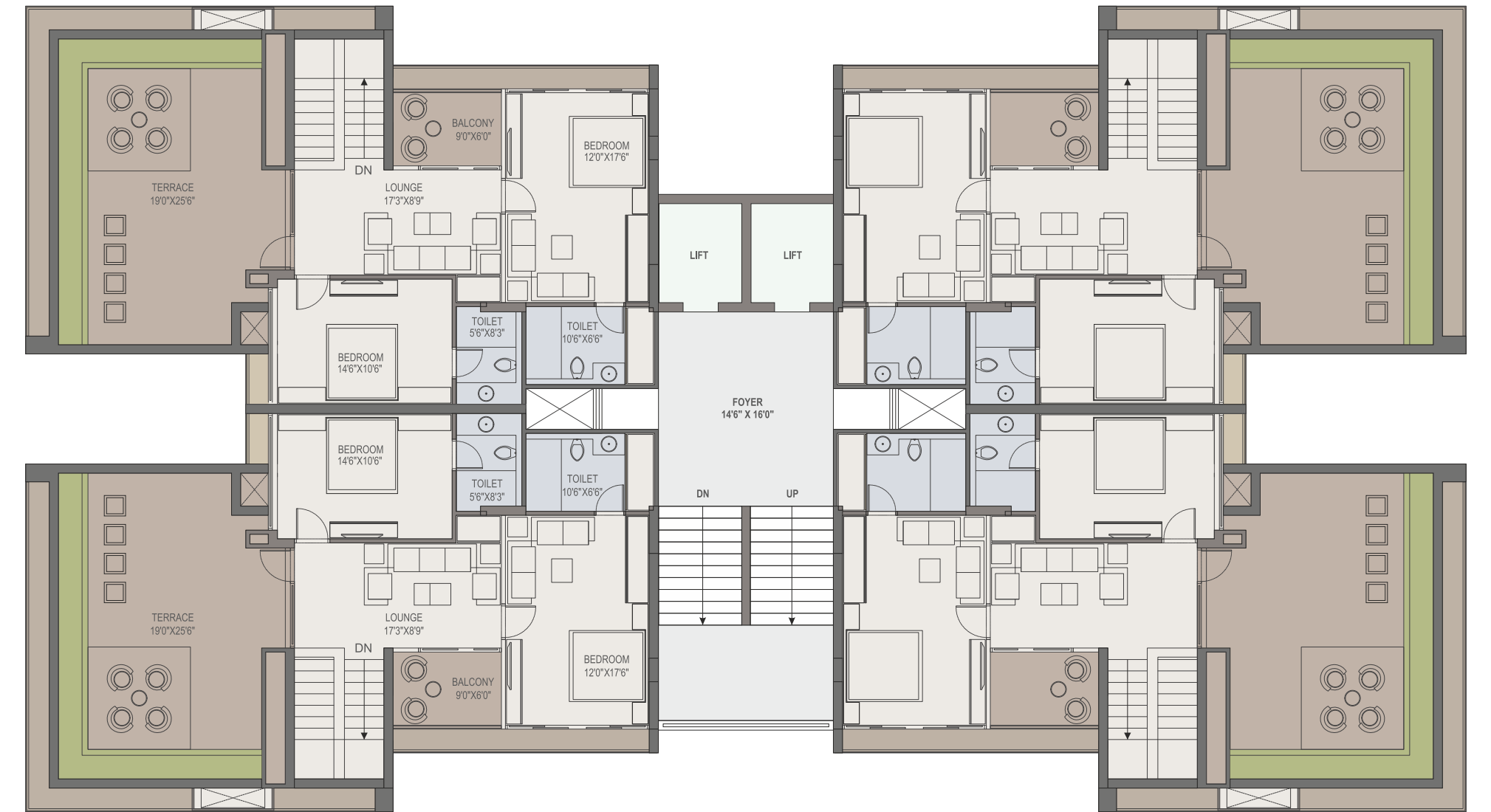


TYPICAL UNIT PLAN - WFH

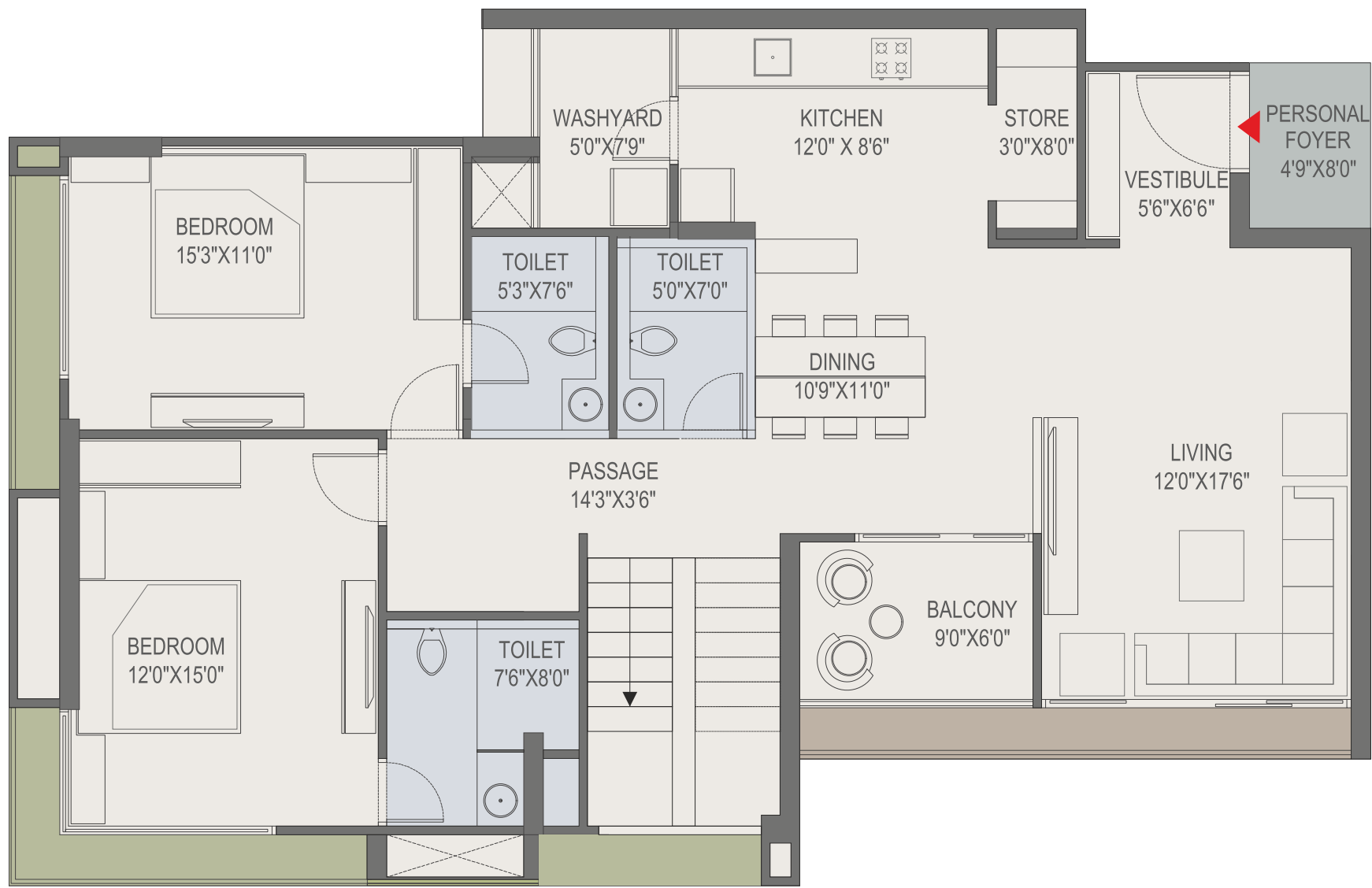
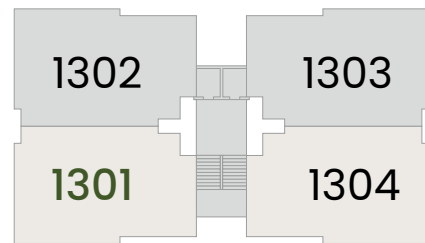
TYPICAL UNIT PLAN

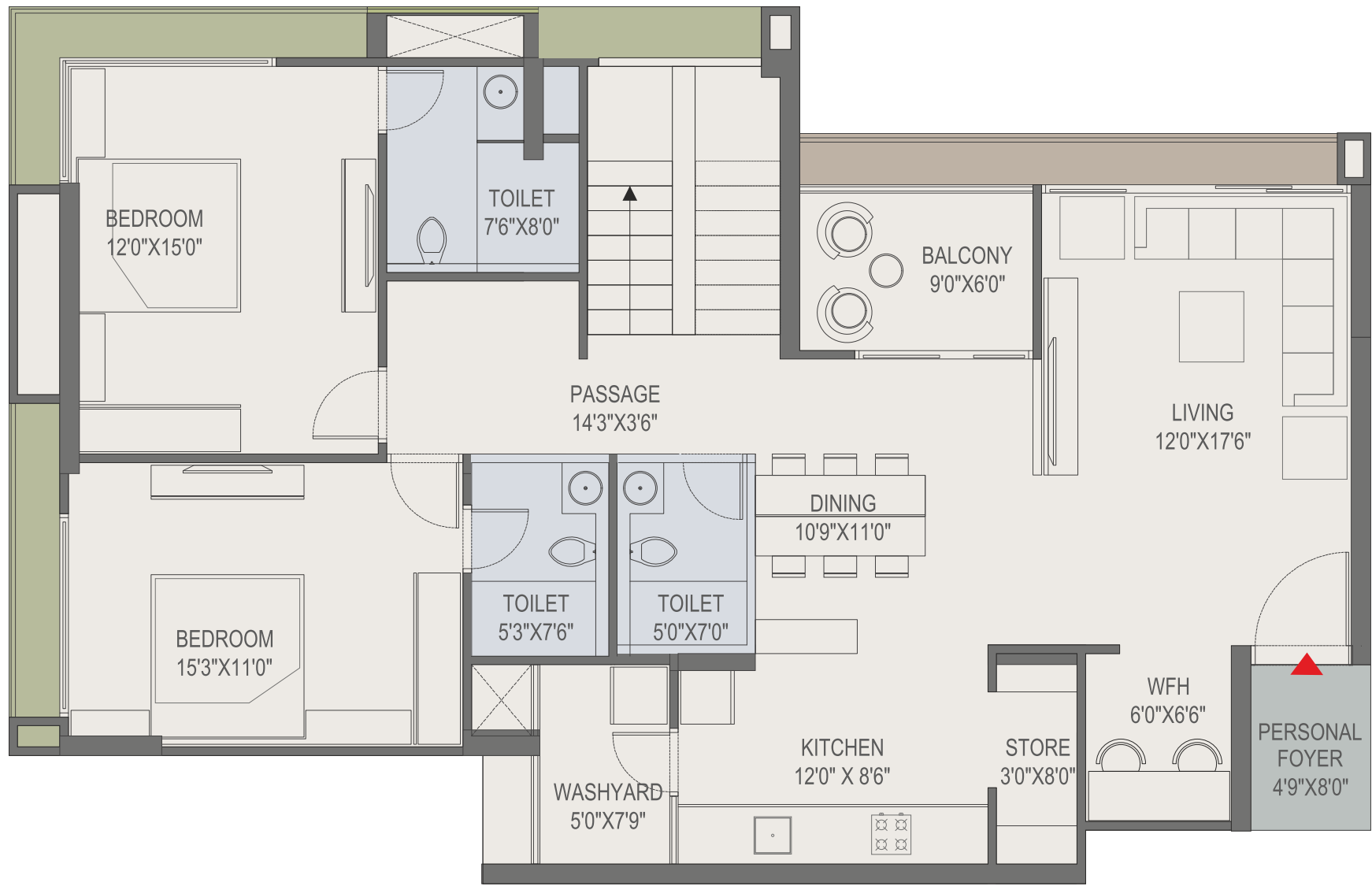
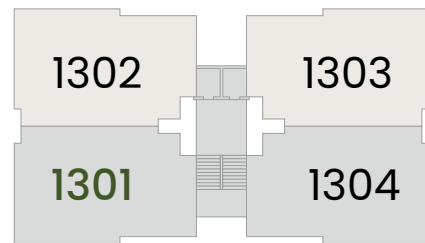


 PENTHOUSE LOWER LEVEL FLOOR PLAN



 PENTHOUSE UPPER LEVEL FLOOR PLAN





 PENTHOUSE LOWER LEVEL UNIT PLAN - WFH



 PENTHOUSE UPPER LEVEL UNIT PLAN







SPECIFICATIONS

Flooring

- Vitrified Tiles in Drawing, Living, Dining & Bedrooms
- Granite Platform with S.S. Sink & Tiles In Kitchen upto Beam Level
- Natural Granite / Rustic Tiles in Balcony

Colour

- Internal - Putty Finish
- Exterior - 100% Acrylic Paint

Doors

- Laminated Doors
- Video Door Phone

Windows

- Anodised / Powder Coated Single Glazed Aluminium Windows

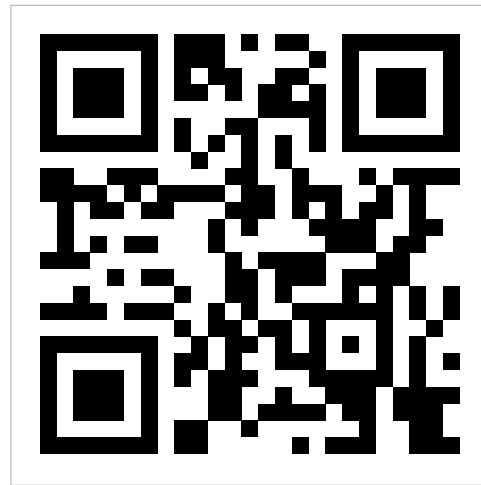
Toilets

- Glazed / Ceramic Tiles up to Lintel Level
- Counter Basin / Wall Hung Basin
- Branded EWC Couple Closet
- Branded CP Brass Fittings

Electrification

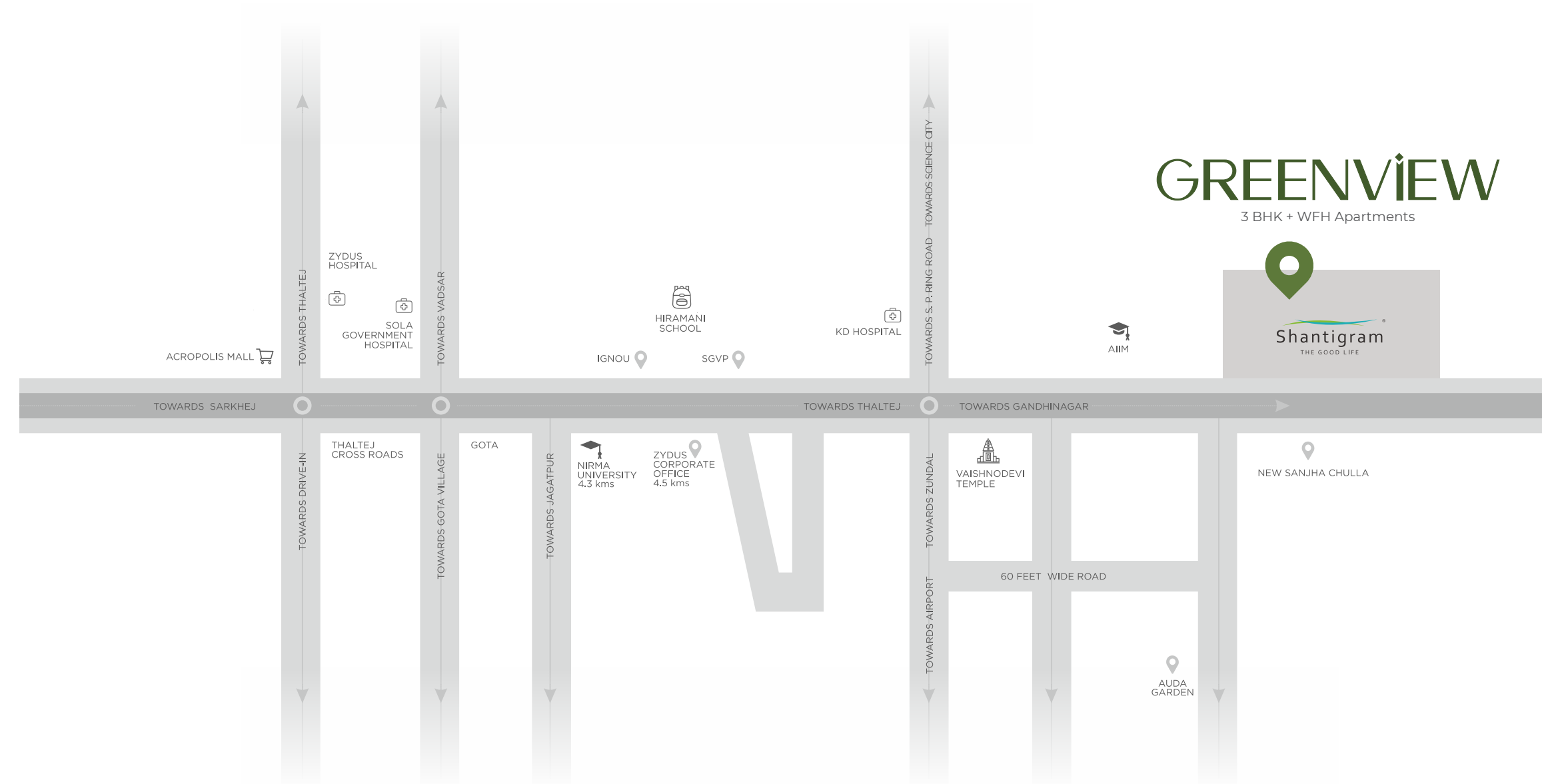
- 3 Phase Concealed ISI Copper Wiring with Modular Switch
- MCB Distribution Panel

Adani Gas Pipeline



SCAN THIS FOR

INQUIRY | LOCATION | PLAN
PHOTOS | BROCHURE | PRICE LIST



GREENVIEW

3 BHK + WFH Apartments

Shantigram
THE GOOD LIFE

TERMS

- All rights are reserved by the developers to make any changes in plans, elevations and other details which will be binding to all the members. In order to maintain the aesthetics of the apartments at a very high level, installation of AC units will be permitted at the designated spots and nowhere else, changes which effect the elevation & structure system shall not be permitted for all times to come.
- Encroachment, in any form, outside the defined units shall not be allowed.
- All dimensions shown in the plans are approximate, average unfinished and subject to variations.
- Any taxes like GST and Govt. charges extra.
- All payments shall be made in favour of SUMMERWOODS DEVELOPERS INDIA LLP.

The above information is indicative of proposed development and is issued in good faith for guidance only and not to be considered as part of any document.

SITE ADDRESS

Greenview, Adani Shantigram Township,
Nr. Vaishnodevi Circle, Ahmedabad




For inquiry

Call: 7575 00 7331
shivalikgroup.com/greenview

65+ LANDMARKS | 10 MILLION+ SQ. FT. | 6500+ UNITS



Head Office: Shivalik House - Besides Satellite Police Station, Ramdevnagar Cross Road, Satellite Road, A'bad-15

Call: 4020 0000 | www.shivalikgroup.com     

RERA NO.: PR/GJ/AHMEDABAD/AHMEDABADCITY/AUDA/RAA09534/241221