

9.25 in

13.50 in



brm.co.in

Dream Homes over the Hill.

3 & 4 BHK PEAK LIVING
+ SHOWROOMS



Luxury over the Hill

Tremont Group knows how to debut in style. Their newest project is luxurious and located excluded from the hum-drum of city. However, still they are at a prime location in the city - near Ratna Paradise, Khoraj, Gujarat.


They are committed to deliver superior quality homes which are modern yet nestled in the beauty of nature. Experience the splendour of countryside in a contemporary home at Tremont.



Luxury Homes & Showrooms



Tremont Group is creating modern 3 BHK & 4BHK homes & showrooms which are surrounded with panoramic views, are near a picturesque lake and promise superior quality.



tremont
3 \ 4 BHK ELEGANT LIVING | SHOWROOMS

Modern
facade in the
lap of nature



Walkway with greenery

Take relaxing walks, amble in the evenings with the nature surrounding you. Embrace the greenery and experience the joy of living in harmony with nature.



Landscaped garden

Take your family on serene picnics in the landscaped gardens at Tremont. Live your afternoons in inspiring landscaped gardens that truly make the most of their natural surroundings at Tremont.



Cosy sitting space

Unwind in the thoughtfully designed outdoor seating space. Spend time with your friends or star-gaze with your loved ones.



tremont



Well equipped gym

Achieve your health goals by starting on your fitness journey with a modern well-equipped gymnasium.



Comfy home theatre

Witness the magic of movies at the home theatre inside the society at Tremont. We at Tremont bring the cinema to your home.



Indoor entertainment

Spend raining evenings or Sunday afternoons playing fun and entertaining indoor games with your friends and family at Tremont.



Multi purpose hall

Host your guests and lavish events in the multipurpose hall over the hill. The spacious hall would be the perfect venue for gatherings or a conference.



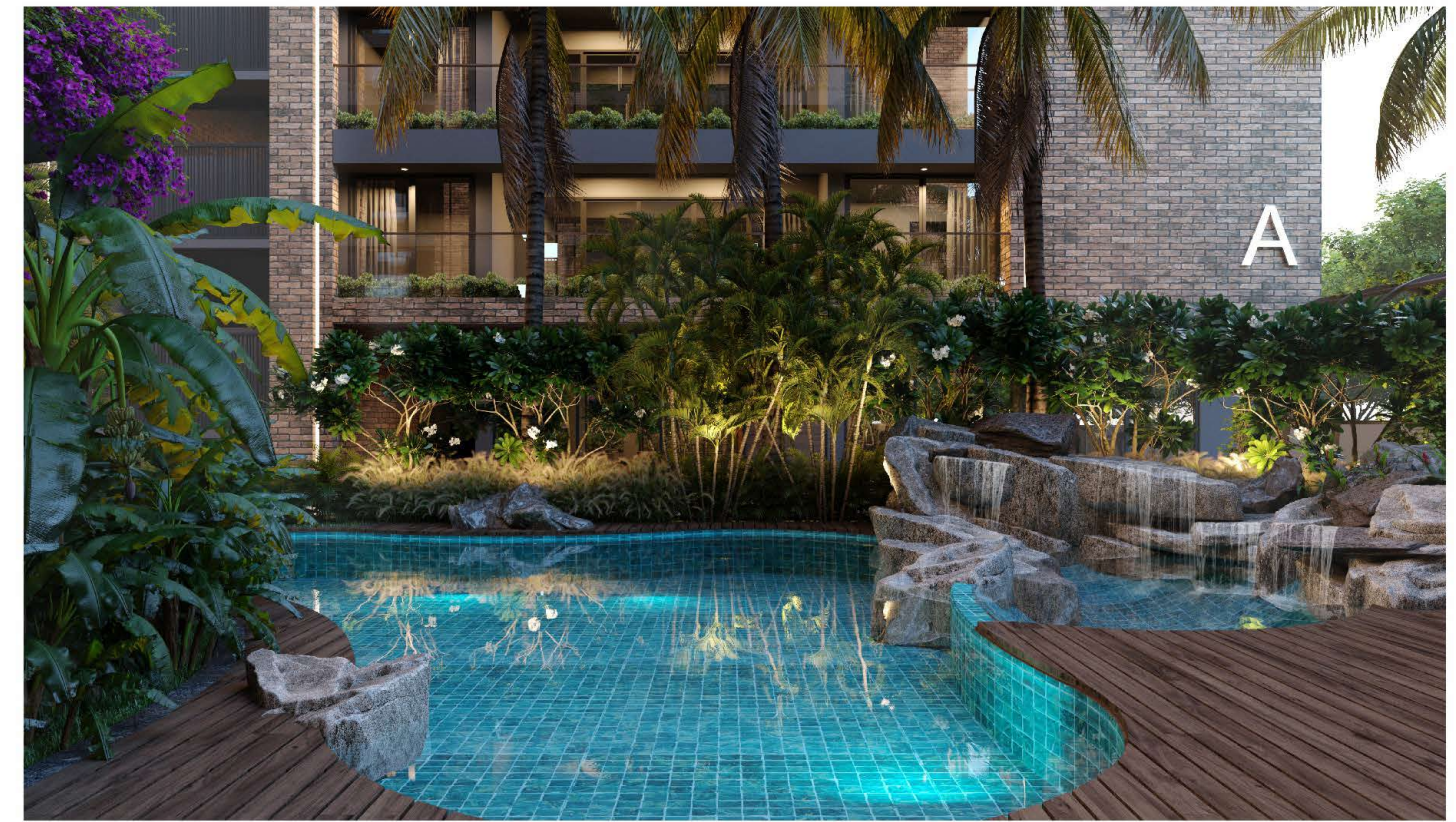
Lavish central lawn area

Host idyllic outdoor events in green and landscaped space. Enjoy sitting area with additional facilities to ensure a seamless event.



Fun toddler play area

Watch your children live their childhood at the safe and fun toddler play area. Give them the chance of experiencing the joy of playing outdoors.



Esthetic waterscape

Be at one with nature and savour the soothing waterscape at Tremont. It enhances the ambience of the outdoor space for you to experience nature at its best.



Enlightening library

Appreciate the words of wise authors at a wide, well stocked library with exclusive access for the residents. Spend hours working, researching or reading at the insightful library.



Rich entrance & lobby

Always get a grand welcome at Tremont with a magnificent entrant and a spacious lobby. Grandeur and glam are the only words you'll use to describe what Tremont has to offer it's visitors and residents.



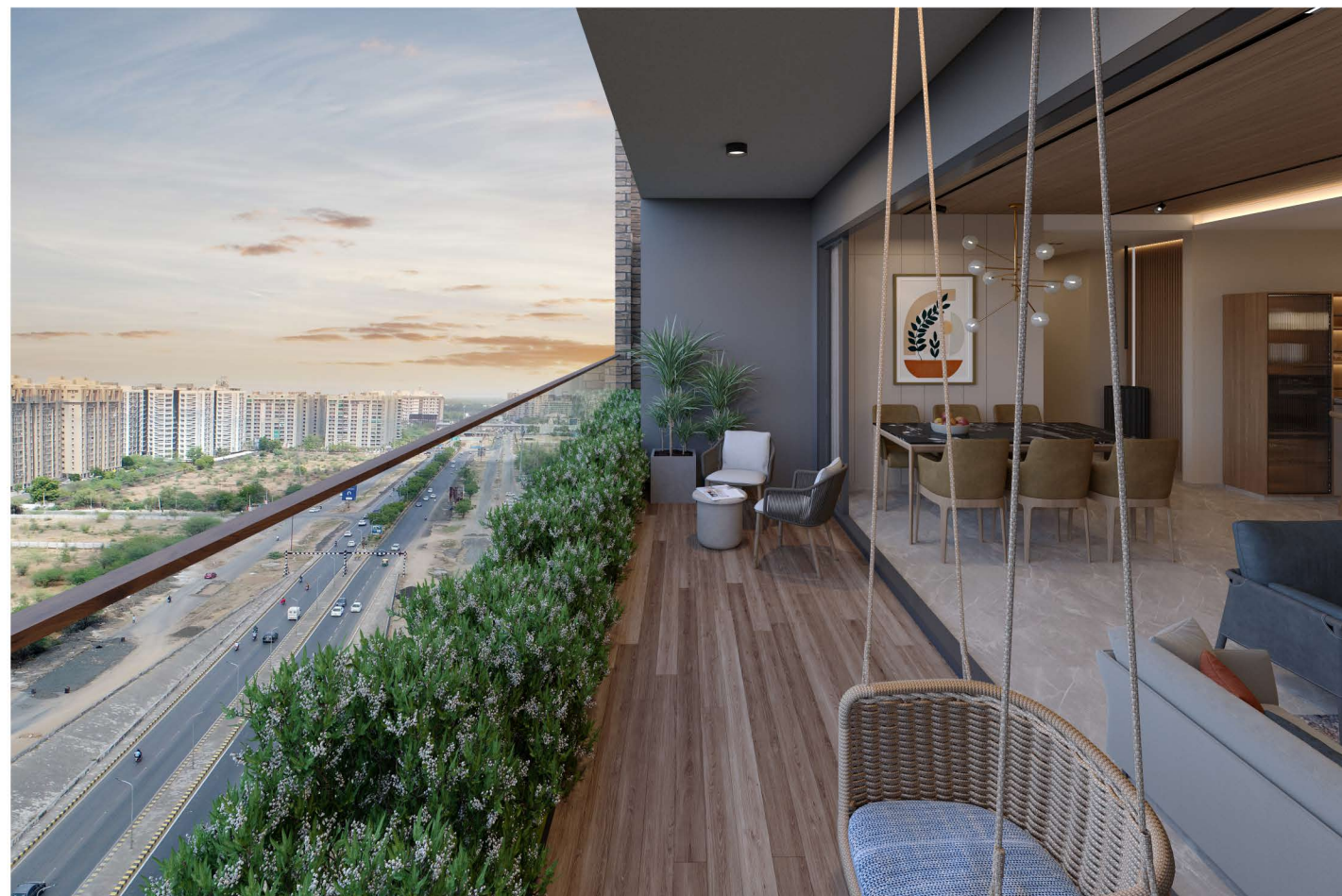
Rooms with majestic views

Witness majestic views and mesmerising sunrises from the balcony and from every room in Tremont.



Modern and spacious

Cook in modernly equipped kitchen and sleep in spacious bedroom with ample natural light.



Ground floor



EXIT

60 MT. WIDE ROAD

18 MT. WIDE ROAD

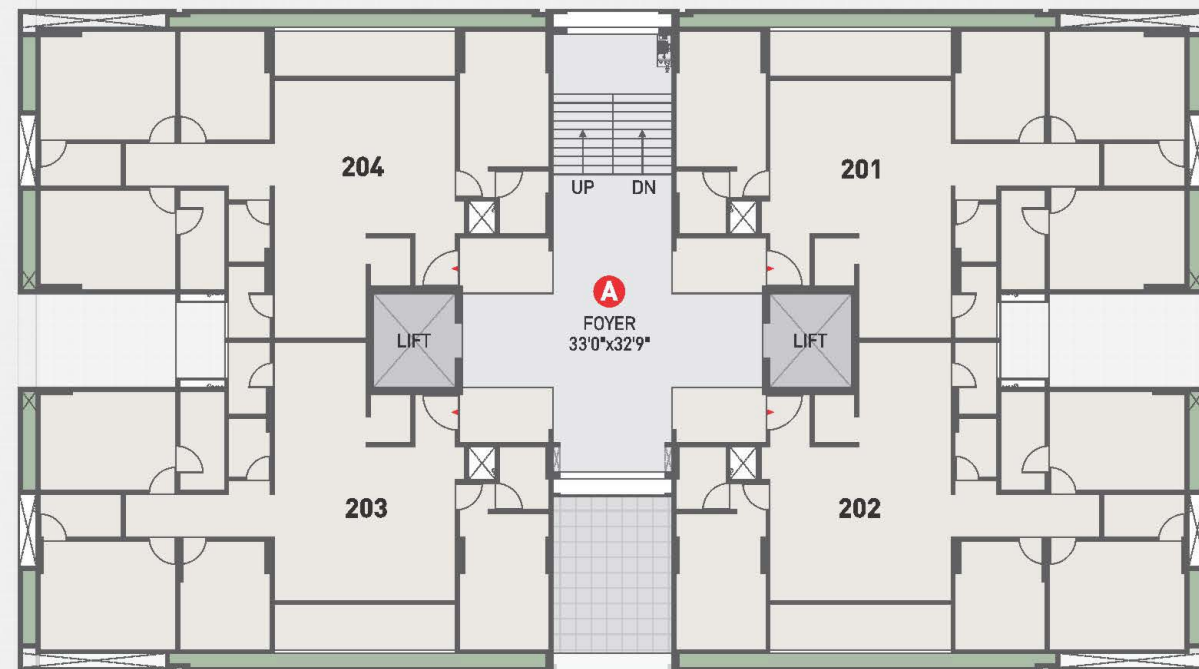
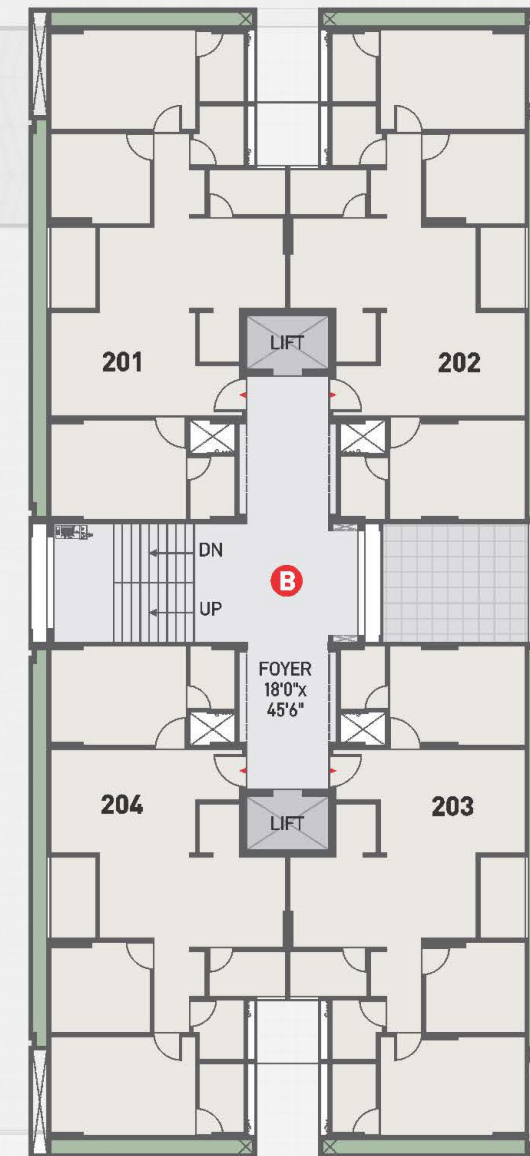
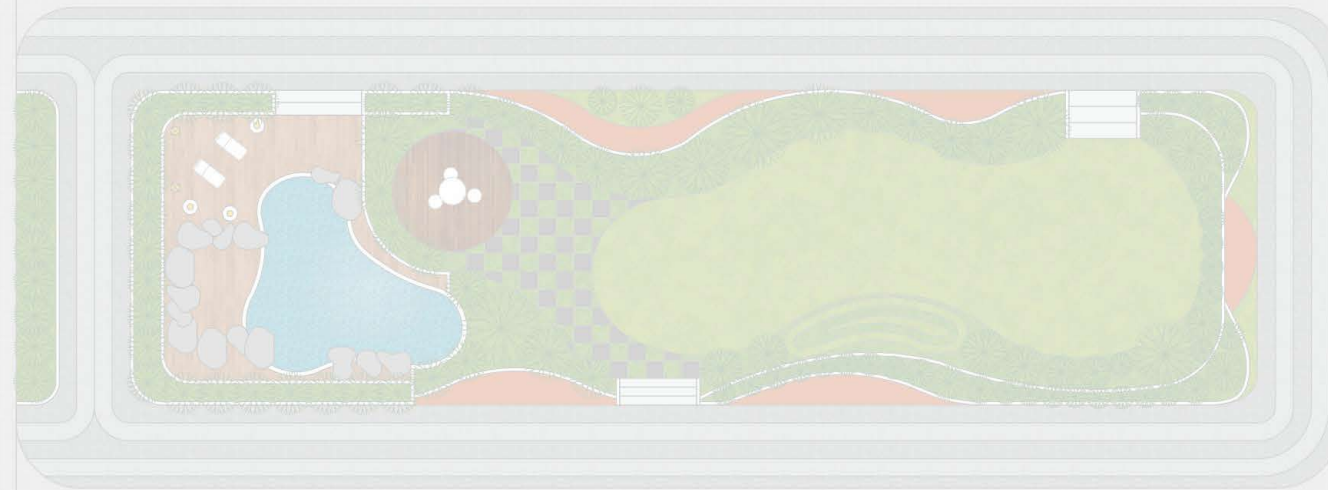
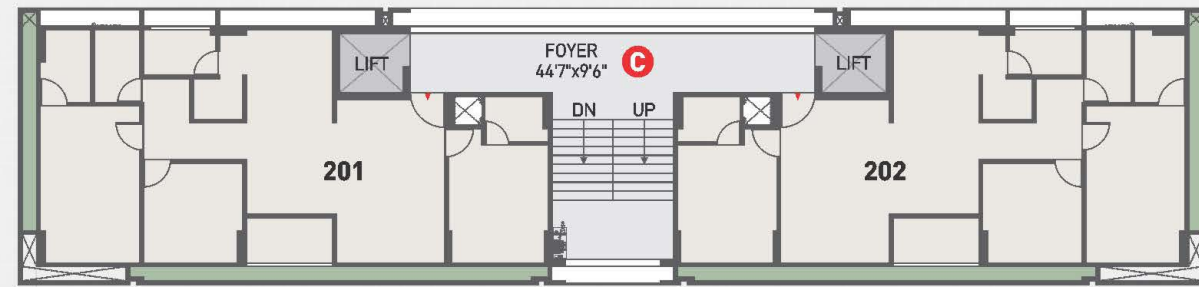
First floor



60 MT. WIDE ROAD

18 MT. WIDE ROAD

Second floor



TERRACE
51'3" x 33'11"

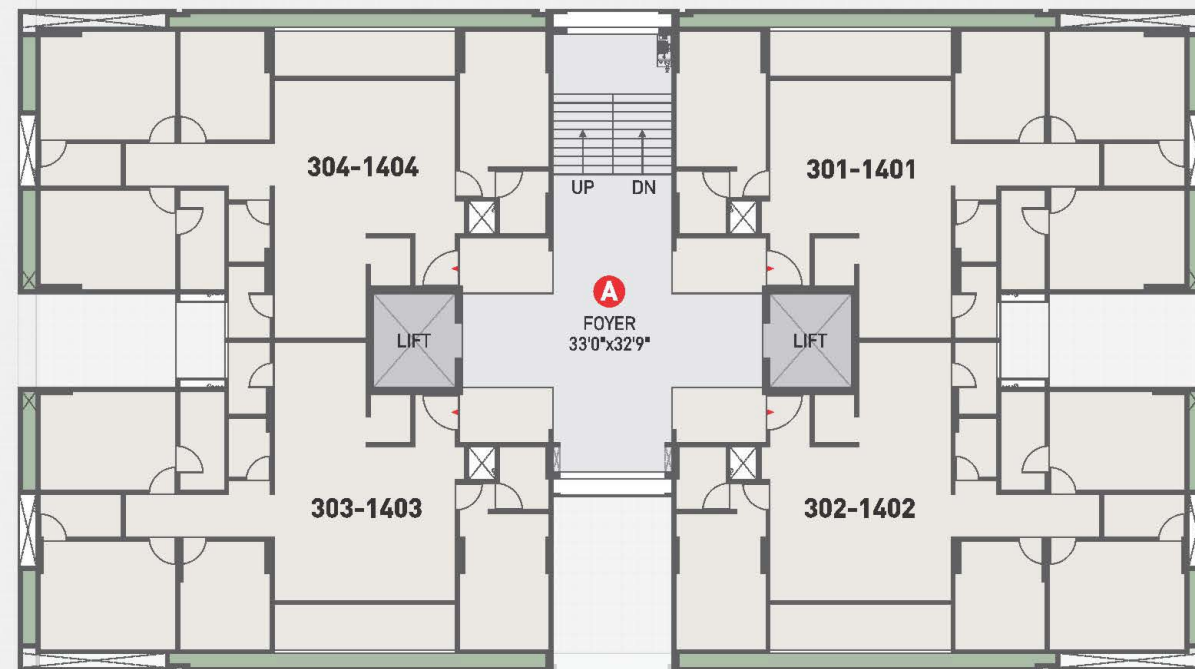
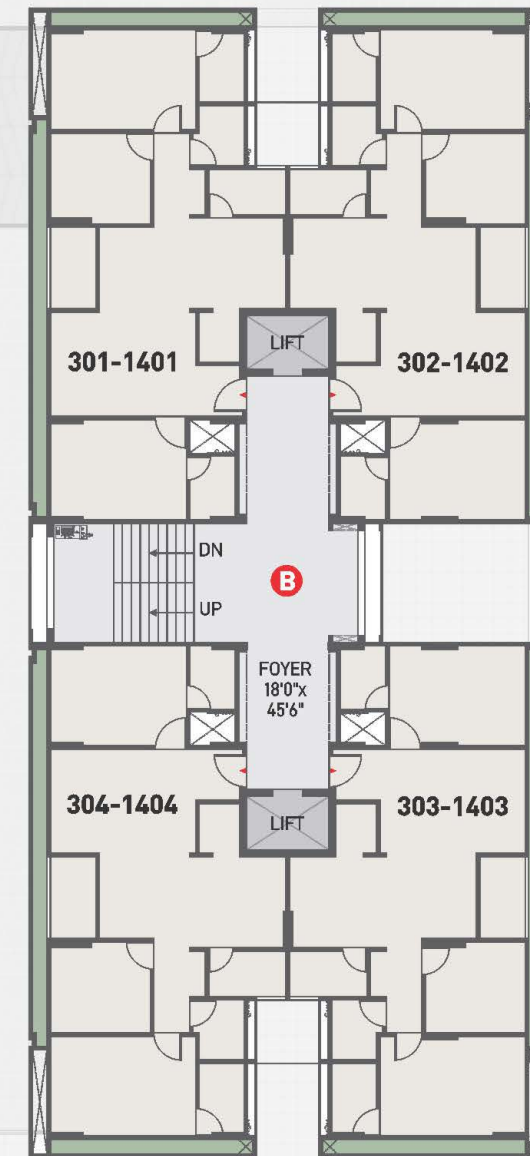
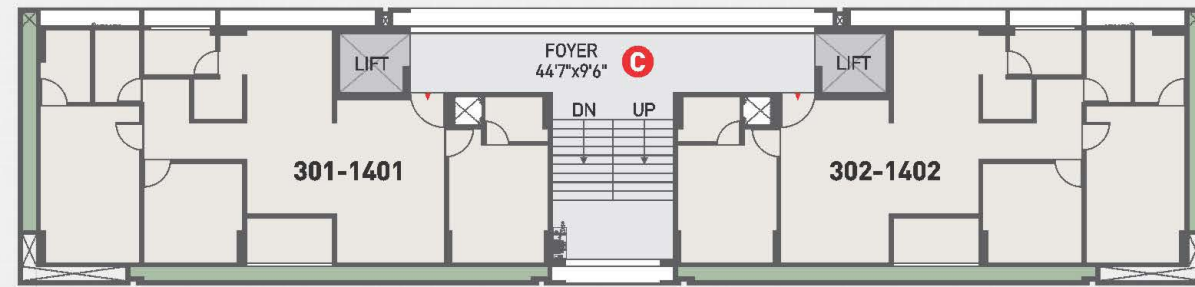
TERRACE
30'7" x 46'5"

18 MT. WIDE ROAD

60 MT. WIDE ROAD

Typical floor

(3rd to 14th Floor)

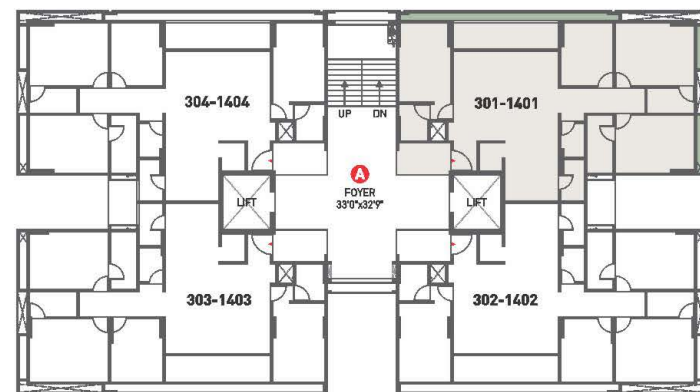


18 MT. WIDE ROAD

60 MT. WIDE ROAD

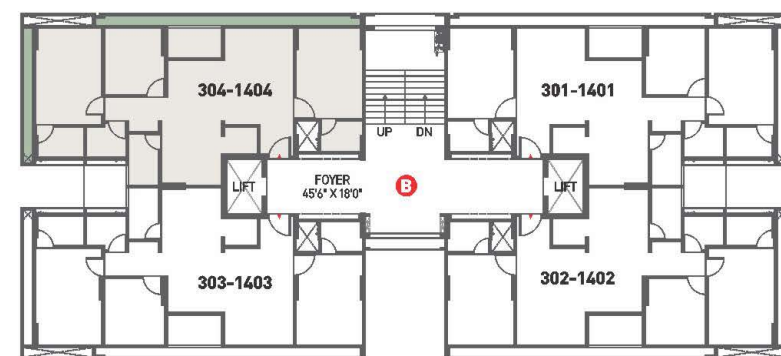
Type 1

4 BHK | BLOCK A



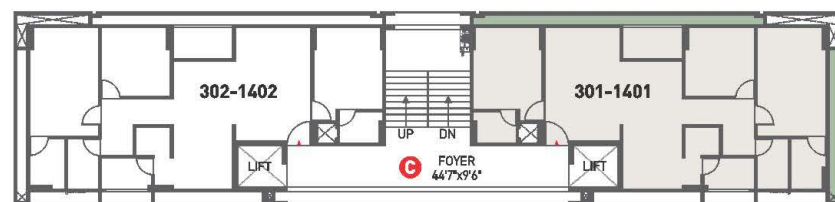
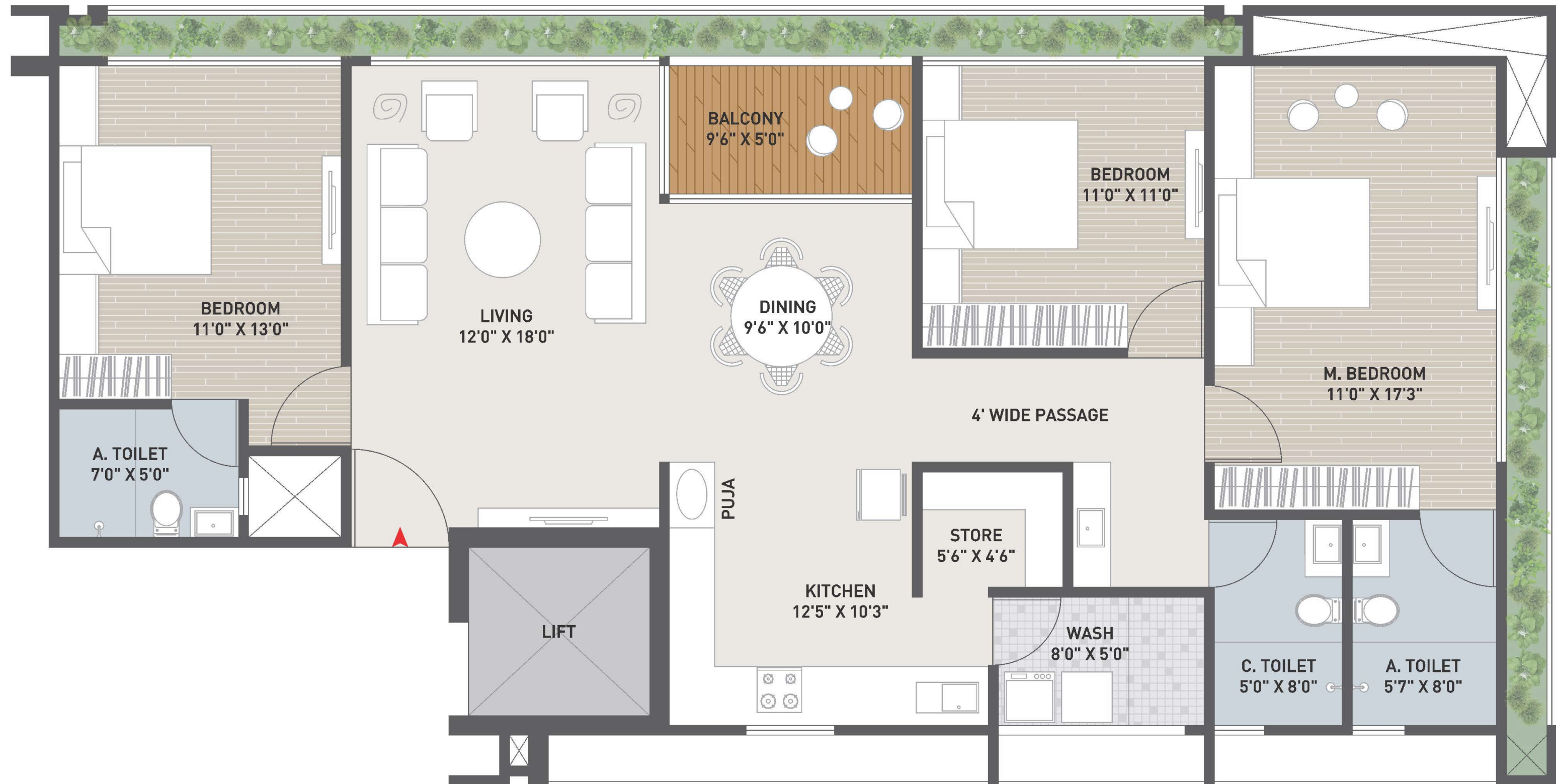
Type 2

3 BHK | BLOCK B

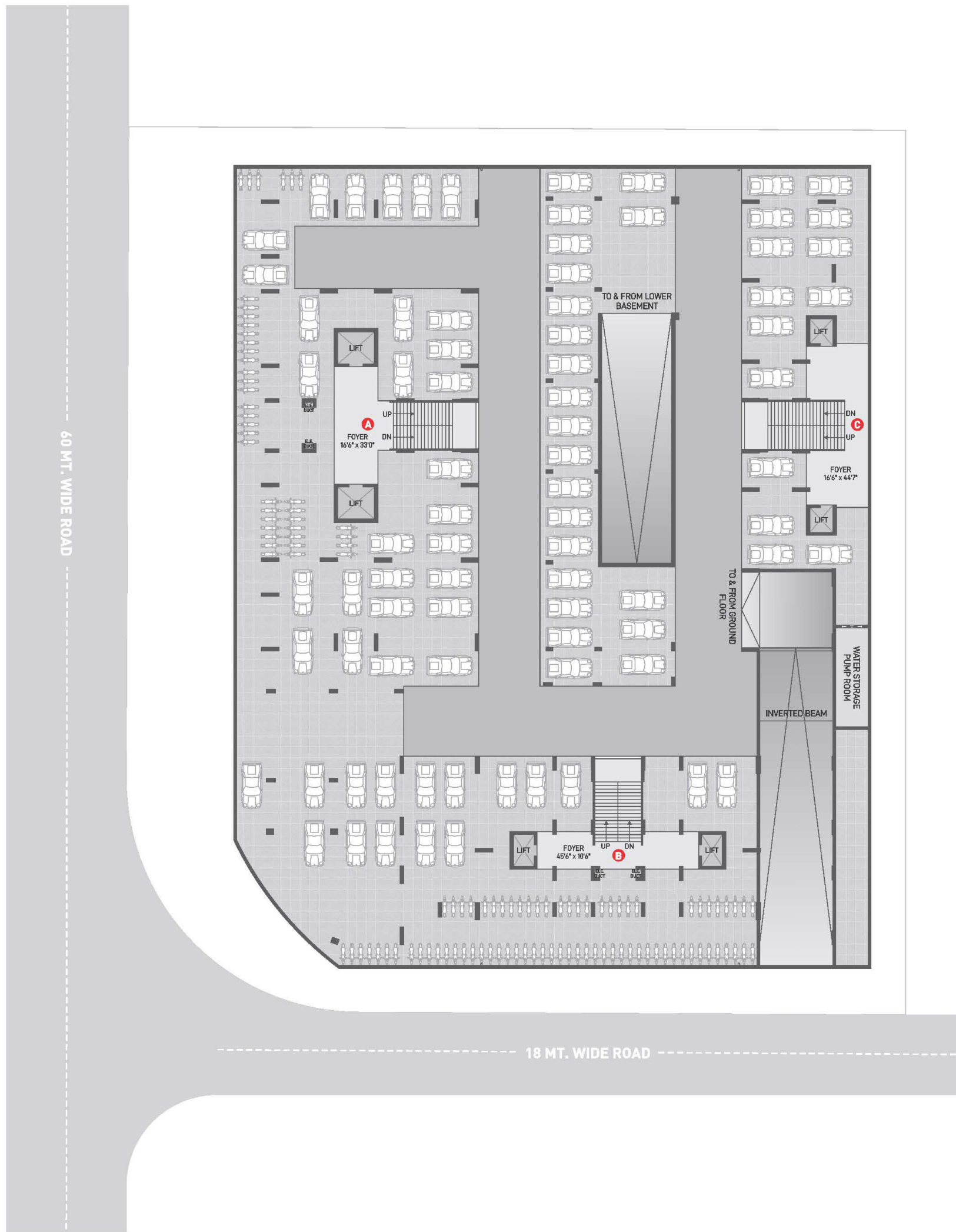


Type 3

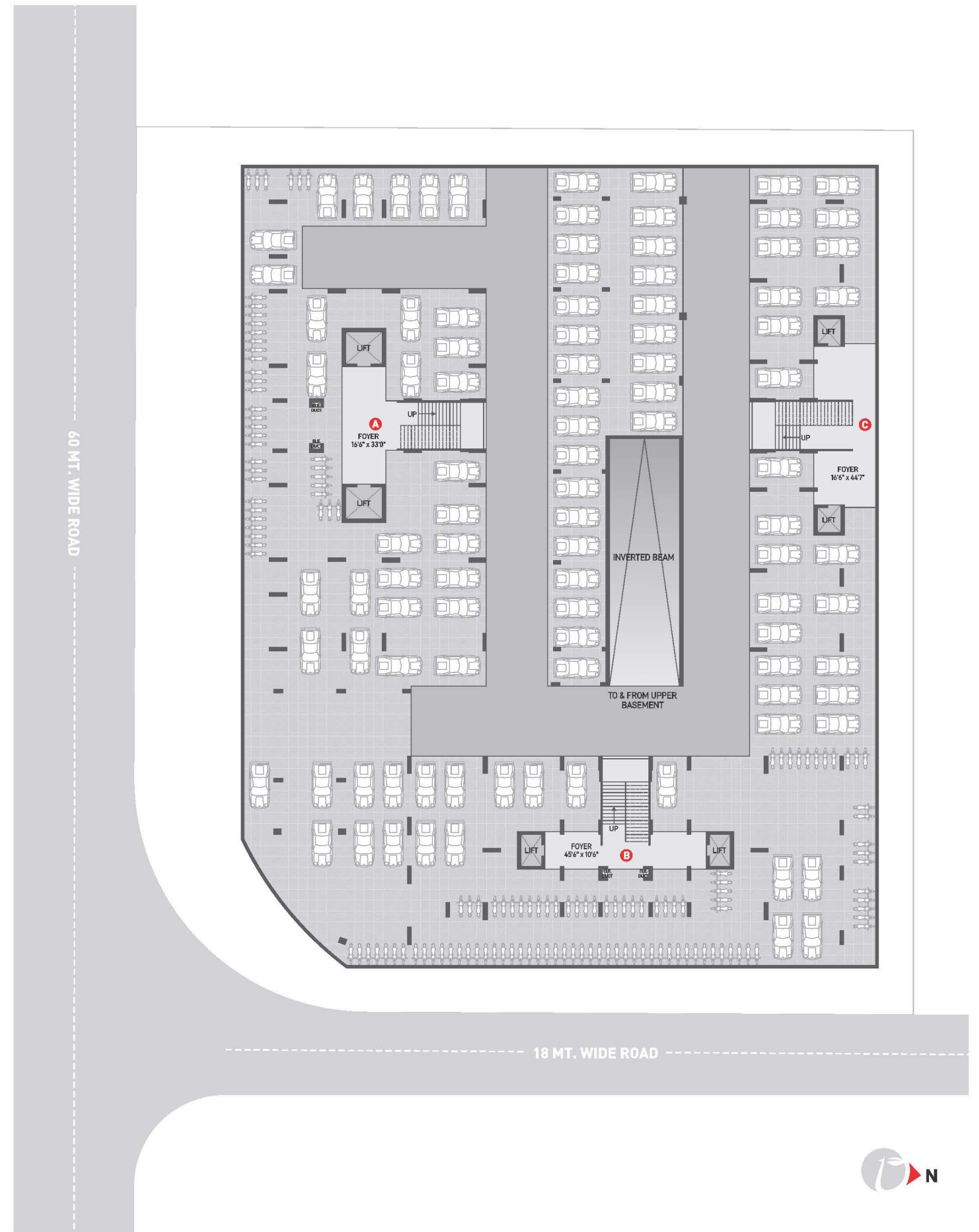
3 BHK | BLOCK C



Basement 1



Basement 2



Live
at a prime
location



 tremont

Specifications

STRUCTURE	Earthquake resistant.
WALL FINISH	Inside wall plaster with putti finish. Double coat plaster with texture paint or brick cladding as per architecture requirement.
DOORS & WINDOWS	Main Door : Designer flush with natural veneer, with wooden frame. Other Doors : Flush door with wooden frame. Windows : Premium quality aluminium section windows.
FLOORING	Vitrified flooring in living, dining, kitchen & all bedrooms.
KITCHEN	Mirror polished granite platform with premium quality stain proof ss sink. Decorative tile dado up to till lintel level.
BATHROOM & PLUMBING	Separate wet & dry areas. Vitrified tiles till lintel level. CPVC - UPVC pipes & branded plumbing accessories with company warranty. Branded ceramic fittings. Electric geyser point & exhaust fan provision in all bathrooms.
WASH AREA	Kota stone floor in wash area. Dado glaze tiles. Electric & plumbing points for washing machine & water purifier.
ELECTRIFICATION	Three phase concealed copper wiring with ISI wires & branded modular switches. ELCB / MCB with internal distribution board. AC in all rooms. Provision for TV cable & telephone points.
INTERCOM SYSTEM	Intercom system in all units.
TERRACE	Tile / China mosaic in terrace area with water proofing.

Notes

- Changes in elevation shall not be allowed to be done by members of society. All the government & semi-government charges like stamp duty, GST and any other tax by state or central government shall be borne by members. Legal documentation charges and Advance maintenance shall be borne by the members separately.
- All the rights reserved by a developer to make any changes in the layout plan, exterior elevation, dimension and other details there is to comply with statutory regulation shall be binding to all the members. Any additional liabilities due to changes in the by laws shall be borne by members. This brochure is just for an easy presentation of the project and should not be treated as a legal document. Subject to Ahmedabad jurisdiction.
- All pictures of amenities are for imagination only.



SITE ADDRESS

Besides Tragad underpass, Nr. Vaishnodevi circle, Ahmedabad - 382421

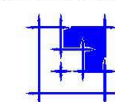
CONTACT

98258 05993 | 76000 31920
tremontahd@gmail.com

ARCHITECT



STRUCTURE ENGINEER



Shreeji Structurals

PR/GJ/GANDHINAGAR/GANDHINAGAR/Gandhinagar Municipal Corporation/MN218AA10118/121022 | www.gujrera.gujarat.gov.in