

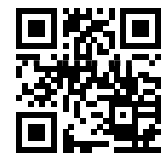
westport
Truly Corporate

— **V SQUARE INFRABUILDCON LLP** —

"WESTPORT" Sindhubhavan - S.P. Ring Road Corner
Opp-montecristo Banquet, Thaltej, Ahmedabad-380058 Gujarat

— PH : 9099001487 | 9978966676 —

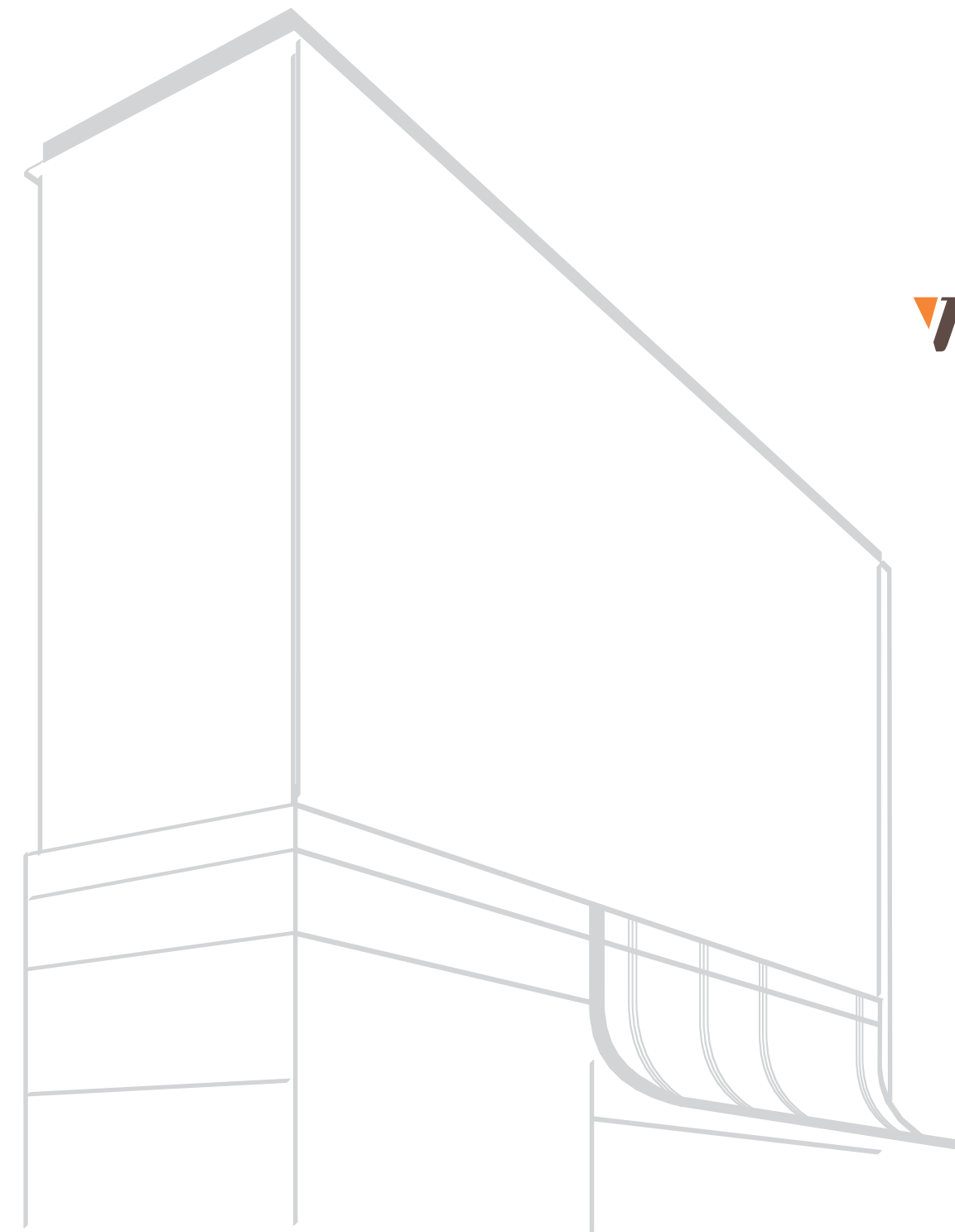
WEBSITE QR CODE



VSQUAREGROUP.COM



RERA : PR/GJ/AHMEDABAD/AHMEDABAD CITY/AUDA/CAA06790/A1C/100521 / WWW.GUJRERA.GUJARAT.GOV.IN



westport
Truly Corporate

The corporate nexus of eminence

an iconic architectural **masterpiece** located on one of the fastest - developing areas in the city of ahmedabad - sindhu bhavan road. with artfully designed **retail, corporate offices & hotel**, westport enjoys a strategic benefit along with its **premium identity**.

a project by



westport
Truly Corporate

westport strives to redefine the concept of modern commercial buildings with its spacious corporate offices, ranging between 1470-12300 sq.ft. best global design and distinguished construction.

the 19-storey building is the first one of its kind in ahmedabad where 1 to 4 basement floors are reserved for parking dedicated to corporate offices and hotel parkings.

ground to 2'd floor are dedicated to corporate entrance, lounge, restaurant(s) and luxury brand showrooms. 11th to 19th floors designed for corporate offices space

RETAIL | HOTEL | CORPORATE



SEPARATE LOUNGES FOR HOTEL & CORPORATE



WATER HARVESTING SYSTEMS



ADDRESSABLE FIRE DETECTION SYSTEM



FACADE CLEANING SYSTEM



LIMITED RETAIL LARGE FORMAT FLOOR PLAN



SMART LIGHTING



4 - FLOOR BASEMENT WITH SMART PARKING



MODERN ELEVATORS



SKILLFULLY DESIGNED LARGE CORPORATE OFFICES



SECURITY SYSTEM



PRIVILEGE CARD FOR CORPORATE OWNERS



WATER RECYCLING

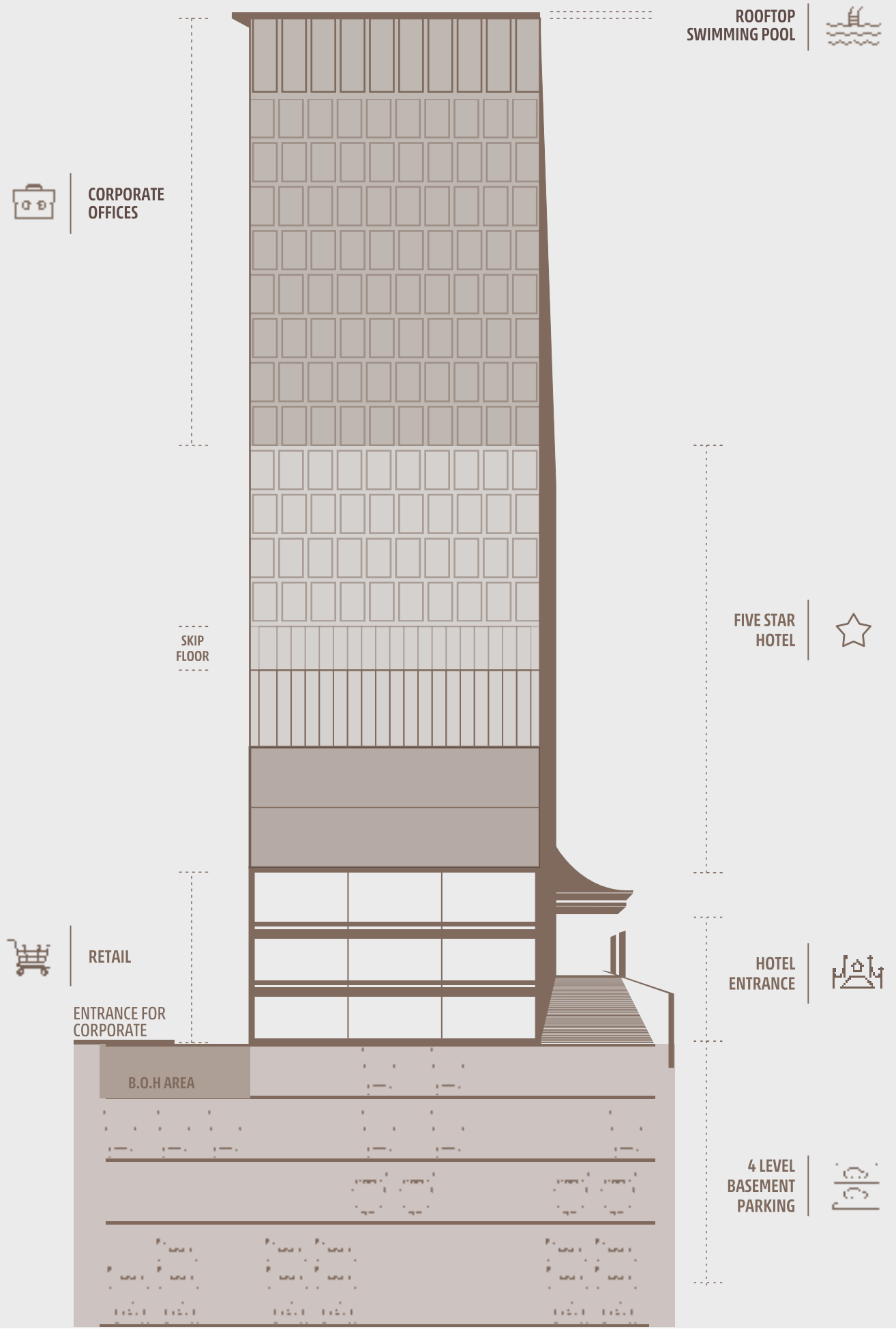


DEDICATED ENTRANCE FOR CORPORATES AND HOTEL

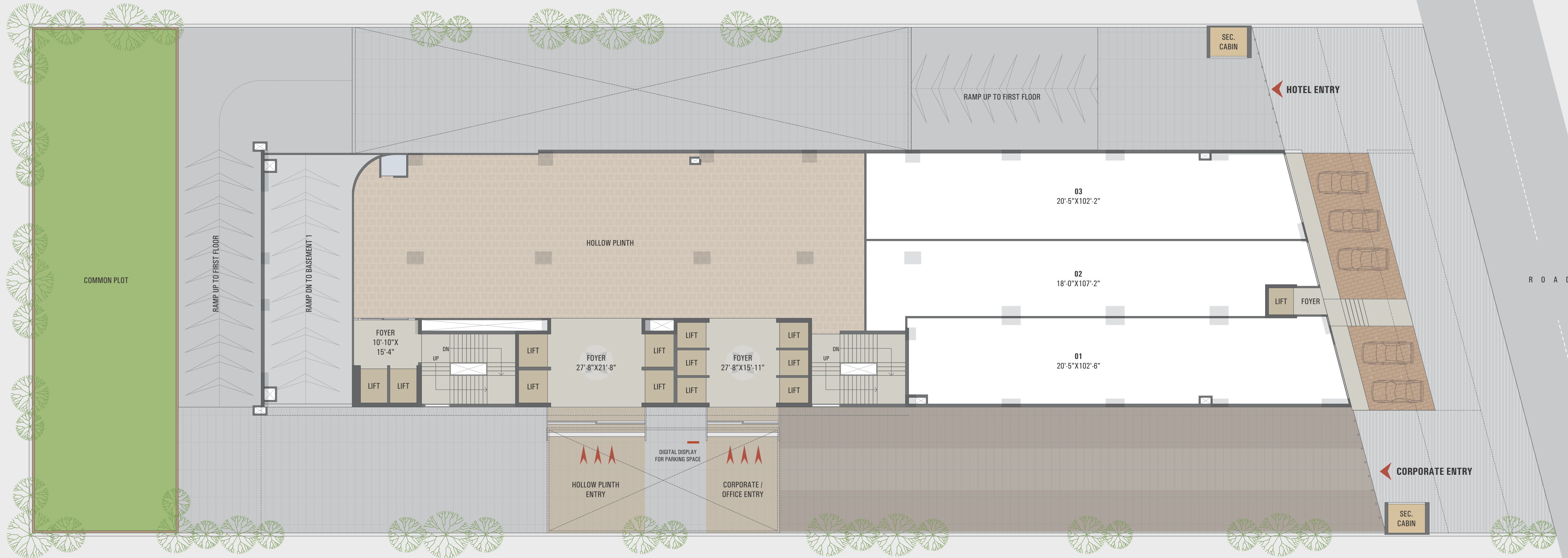
westport
Truly Corporate

SHAPING TOMORROW'S
CORPORATE GIANTS





GROUND FLOOR



UNPRECEDENTED **RETAIL INNOVATION**

1ST FLOOR



UNPRECEDENTED **RETAIL INNOVATION**

2ND FLOOR



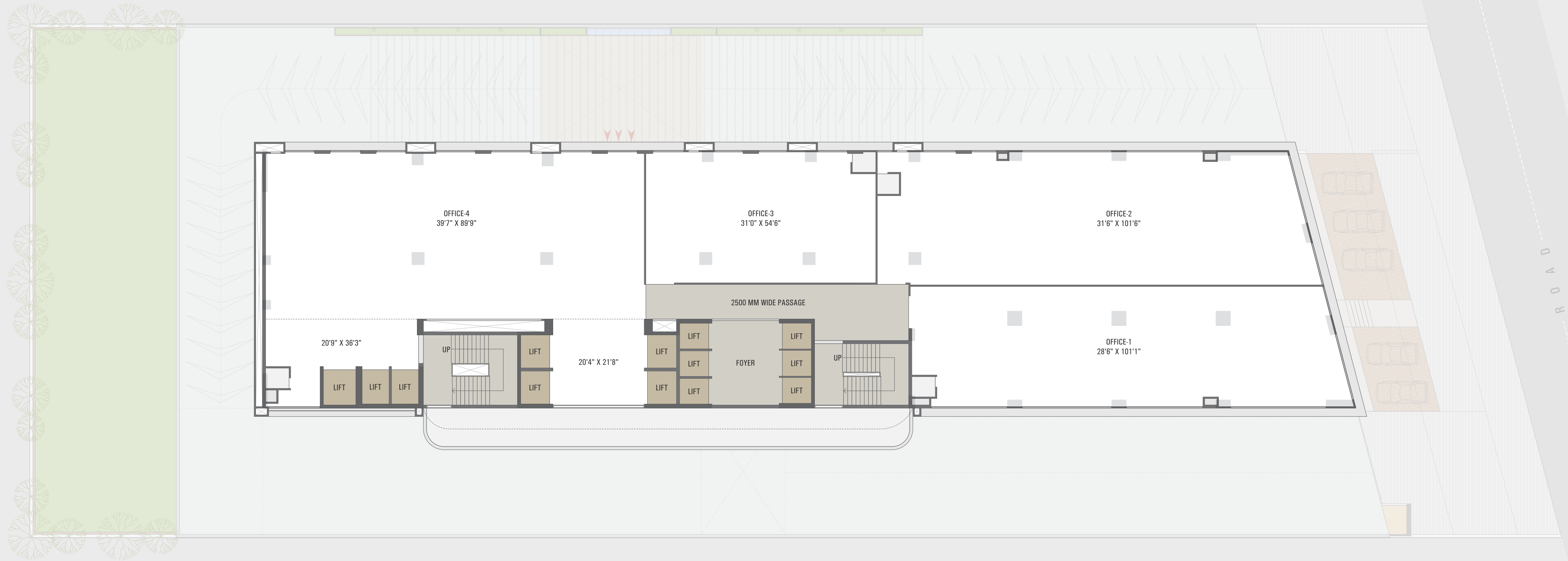
UNPRECEDENTED **RETAIL INNOVATION**



EUPHORIC DESIGN FOR THE URBAN DYNAMICS

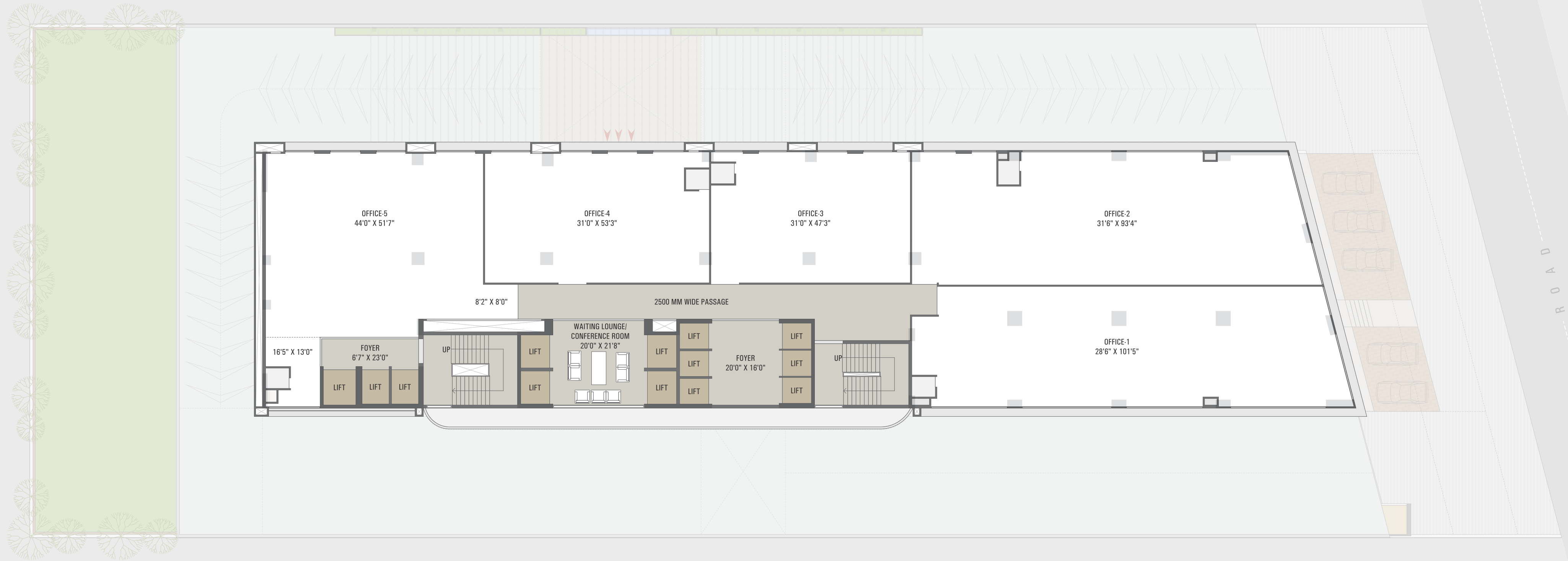


11,13,14,16,17TH FLOOR



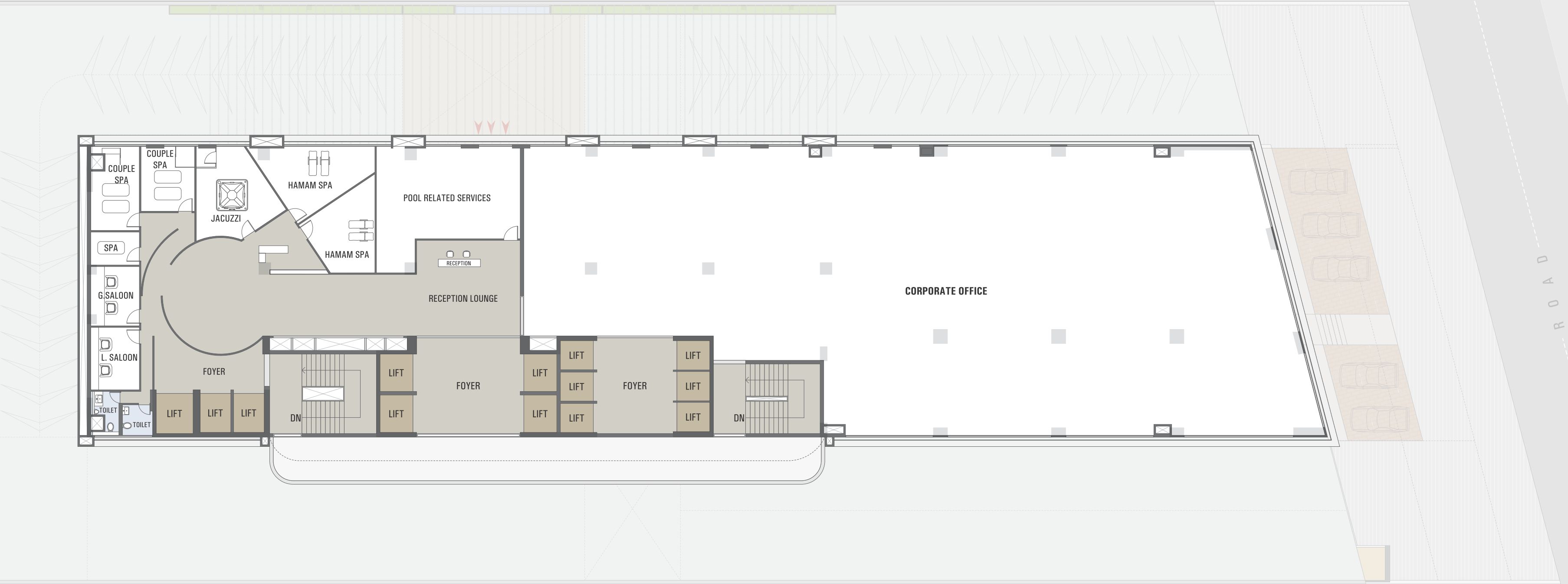
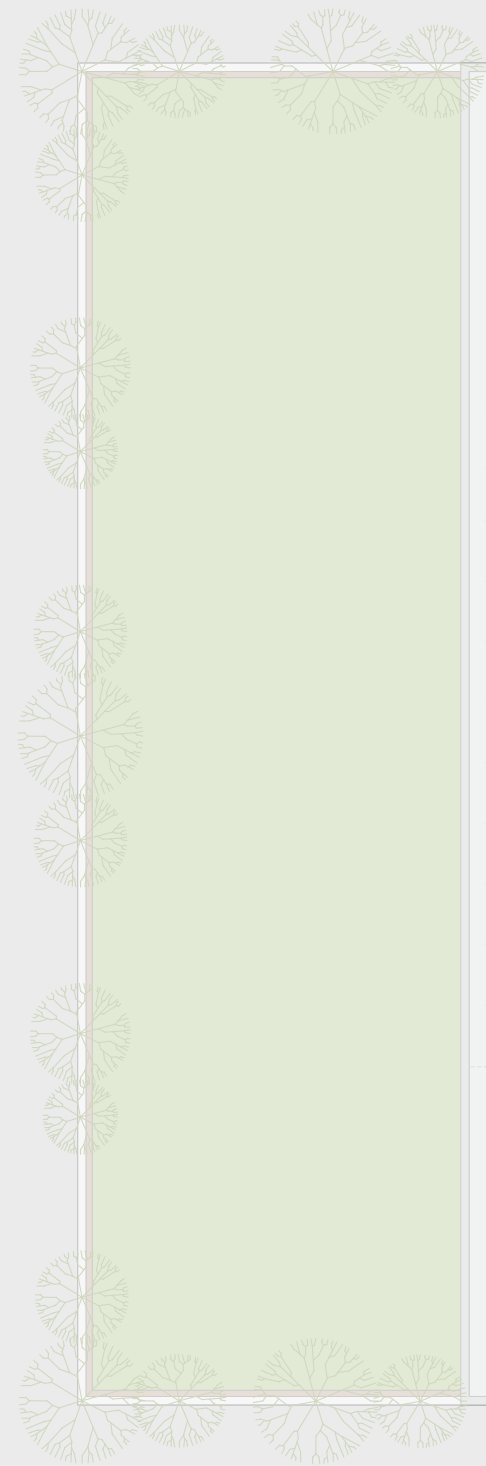
UNPRECEDENTED **RETAIL INNOVATION**

12,15,18TH FLOOR



UNPRECEDENTED **RETAIL INNOVATION**

19TH FLOOR





SPECIFICATIONS

- PROVISION FOR ENERGY-EFFICIENT VRF BASED AIR CONDITIONING SYSTEM
- TWO-TIER MECHANICAL SYSTEM AND DYNAMIC PARKING SOLUTIONS
- WALL FINISH - PLASTER/PUTTY
- CUSTOMISED INTERIOR OPTIONS
- ELEVATORS / PARKING & SECURITY SYSTEMS

PLUMBING FEATURES

- EFFICIENT FIXTURES WHICH ARE ECO FRIENDLY & SENSITIVE TO THE ENVIRONMENT
- DUAL PLUMBING SYSTEM USING RECYCLED GREYWATER
- RAINWATER HARVESTING SYSTEM COMPRISING WATER COLLECTION & RECHARGING

ELECTRICAL FEATURES

- INTERCOM FACILITIES FOR CORPORATE OFFICE
- GENERATOR BACKUP FOR COMMON AREA
- ENERGY-EFFICIENT LIGHTING SYSTEMS FOR COMMON AREA



TERMS & CONDITIONS • The brochure is for the easy presentation of the Project. It should not be considered as a part of the legal documents. For further information regarding the Project the Member / customer is requested to check the details on RERA website or at the Developer's office before going ahead with the booking. • Stamp Duty, Registration Charges, Legal Documentation Charges, Advance Maintenance, Fix Maintenance Charges, AUDA Charges and Electrical Co. Charges Including Cable and Sub - Station Cost Shall Be Borne By the Purchaser. • GST or any Additional Charges, Taxes, Cess or Duties Levied by the Government / Local Authorities Prior, During or After the Completion of the Scheme will be Borne by the Purchaser. • The brochure is for the easy presentation of the Project. It should not be considered as a part of the legal documents. For further information regarding the Project the Member / customer is requested to check the details on RERA website or at the Developer's office before going ahead with the booking. • The Promoter / Developer reserves the right to make changes in the Project, its amenities and specifications as may be suggested by the Project Architect or the Structure consultant and any such changes made shall be binding on the customers / members of the Project. • The Promoter / Developer reserves the right to make minor on-site changes during the course of construction and such changes shall be binding on all the members / customers of the Project. • The dimensions shown in the brochure are approximate and calculated from unfinished surfaces and are rounded off to nearest whole number. The carpet area mentioned is calculated as per the provisions of RERA Act with the help of Autocad software. • The images in the brochure are computer stimulated graphics and are subject to error and omissions. The member / customer is requested to check the physical location of the Project and visit the Project site before going ahead with the booking. • Hotel's amenities and services are subject to chargeable as per hotel management. • Hotel's amenities and services are subject to charges, levied as per hotel guidelines. • Subject to Ahmedabad Jurisdiction only.

